

Waltham Forest

GET
YOUR
FREE
COPY

JANUARY 2023

NEWS

ISSUE 247

“A WAY TO TURN
MY DREAMS
INTO REALITY”

SEEKAY,
APPRENTICE



**FIND YOUR
NEXT JOB**

“WITH NEW
SKILLS I CAN
MOVE FORWARD”

ABDULAI,
ADULT
LEARNER



**LEARN A
NEW SKILL**

“COUNCIL
SUPPORT HAS
BEEN KEY”

DAVID,
SMALL
BUSINESS
OWNER



**GROW YOUR
BUSINESS**

WHATEVER YOU'RE LOOKING FOR,
WALTHAM FOREST COUNCIL CAN SUPPORT YOU.

walthamforestjobs.org



SCAN
HERE

Find out more about
Seekay, Abdulai and
David on page 19.

YOUR CRISIS OUR ACTION
JOBS, SKILLS & GROWTH



Waltham Forest

We can help you get a job!

Find a local job

Explore new careers and job sectors

Get free support: from CVs to interviews

Gain job skills and qualifications

Become an apprentice

Start your own business

Meet employers at local job fairs and events



Visit our website
www.WalthamForestJobs.org
or phone us on 020 8496 2974



Explore our Jobs and Skills Portal
or phone us on 020 8496 2974 •

Be your best

Enrol for free or get up to 70% off hundreds of our courses!



Gain skills and qualifications in:

- Arts, craft and fashion
- Business, accounting and finance
- Community and family learning
- Creative writing
- Digital skills (computers and ICT)
- English, maths and English for Speakers of Other Languages (ESOL)
- Hairdressing and beauty
- Health, social care and childcare
- Horticulture and gardening
- Teaching (assistants)
- Wellbeing, yoga and more

We also offer free jobs help, work placements and volunteer training

Be dynamic. Be in control. Be employable.



Phone 020 8496 2974 or visit
www.lbwfadultlearning.co.uk

Waltham Forest

GET YOUR FREE COPY

JANUARY 2023

NEWS

ISSUE 247

Winter warmers

How the Council is helping residents through the cost-of-living crisis

Over £4 million has been invested to help Waltham Forest residents this winter so far as the cost-of-living crisis continues to affect households.

The support including direct financial support, improvements to residents' homes to make them more energy efficient and reduce energy bills, and funds to ensure the most vulnerable primary school children start each school day with a healthy, filling breakfast.

The Council has also opened 52 winter spaces in libraries and other community venues that people can drop in to and warm up with hot drinks, access advice on financial support, alongside an online directory with details of what help is available, and where it can be accessed. The online directory has had over 80,000 visits.

Leader of the Council, Cllr Grace Williams, said: "We know things are particularly



Cllr Grace Williams meets Lee Griffiths, Soho Theatre comedy producer, at Soho Theatre Walthamstow – the refurbished venue will open at the end of the year, hosting the biggest names and brightest talents in comedy and performance

difficult this winter. We want you to know that we're here for you. We'll continue to

help residents deal with the pressures of the cost-of-living crisis for as long as it takes."

READ MORE ABOUT THE RETROFITTING WORK AND HOW LOCAL PRIMARY SCHOOLS HAVE BENEFITTED ON PAGE 3.



Secure your place for 2023

APPLY NOW



To apply now, visit www.sgmc.ac.uk

Take control of your future...

info@sgmc.ac.uk /monouxcollege @monouxcollege /monouxcollege



Council Leader, Cllr Grace Williams



It's easy to feel overwhelmed right now with so much negativity in the air. But there's lots of positive things happening in your borough this year to bring you some much-needed joy, and I am very excited about some of the fantastic projects that will bring much needed investment, jobs and opportunities.

As we went to print, we received the news that Waltham Forest has been successful in two bids for money from the Government's

Levelling Up fund. Leyton Station will receive approximately £14m after a successful joint bid led by Transport for London (TfL) and the Greater London Authority (GLA). The funds will be used to create step-free access to each platform as well as a new ticket hall, concourse, and gate line. Usage of the station is predicted to grow by up to 35 per cent by 2041 – the improvements are vital to future-proof this important transport hub and improve accessibility for all passengers.

A second bid for £17.2m

submitted by the Council was also successful and will be used for improvements to public spaces in High Street, Hoe Street, and St James Street in Walthamstow. As the work on the new Soho Theatre Walthamstow progresses, the Levelling Up money will be used to make the town centre a more appealing, inviting place for residents and visitors to visit and enjoy.

Whilst we were awarded a total of £31 million across the two successful bids, we were unsuccessful on two other

bids in Leyton and Chingford. We will be looking for further opportunities to see how we can bring extra investment to all parts of Waltham Forest.

Speaking of the Soho Theatre Walthamstow, it's incredible to think that by the end of the year we will be able to enjoy performances at a brand new 950-seat venue that will play host to some of the biggest names in comedy and performance. It will also act as a springboard for the brightest up-and-coming talents – we may be soon enjoying the first

performances from the next Alfred Hitchcock or Fleur East, building on Waltham Forest's rich cultural history.

We'll also be progressing our plans to create a new lido – the first to be built in the borough since 1936. The vision will also include a sustainable state-of-the-art health and wellbeing hub and include investment in improving the sports facilities and green spaces in Low Hall. We will be consulting with residents later this year and we hope to start work on site next year.

LEADER'S SPOTLIGHT

New year, new career

Looking for a change of scenery or a new challenge? There are a wide range of jobs available through the Council – as one of the borough's largest employers there's plenty of opportunities for everyone. We're keen to make sure we offer chances to local people as a priority – visit bit.ly/jobs_WF today to find out what's available and apply.



Pakistan floods appeal

After unprecedented floods ravaged Pakistan last year, vast swathes of cropland and villages remain under water. Shockingly, nearly 10 million girls and boys remain in need of immediate, lifesaving support. We encourage anyone who is able to make a donation through dec.org.uk and make a real difference to vulnerable children in need.



Council meetings calendar

Important meetings where issues that affect residents are open to the public, with many available to watch through a livestream at home. On Thursday 2 March the annual budget setting meeting will take place where your councillors will agree the 2023 / 24 budget. You can see all council meetings with papers and a livestream link at bit.ly/LBWF_Meetings



Contact Waltham Forest Council



www.walthamforest.gov.uk

BETTER ONLINE | More services available online.



Waltham Forest News

Edited by: Corporate Communications Team

Waltham Forest News wants to hear from people in the local community. If you have a story that you'd like us to cover, email walthamforestnews@walthamforest.gov.uk.

Advertising and promotional enquiries:

Please email: advertisingwfn@walthamforest.gov.uk

Waltham Forest Council does not accept responsibility for the content of any non-council advertisements in Waltham Forest News.

Their inclusion does not mean that the council endorses the company or product being advertised.

Waltham Forest News is produced using trees from sustainable managed forests where more trees are planted than felled. Please recycle Waltham Forest News when you have finished with it.

facebook.com/walthamforestcouncil

[@lbwalthamforest](https://www.instagram.com/lbwalthamforest)

[@wfcouncil](https://twitter.com/wfcouncil)



Waltham Forest News is published quarterly by London Borough of Waltham Forest with a print run of 123,000 copies delivered to homes, organisations, businesses and bulk drops in the borough.

The official independently audited free letterbox delivery of Waltham Forest News is 102,773 ABC Regional January to December 2021

Lower bills, warmer homes

In October 2022 the Council announced a £500,000 investment to help up to 2,000 households make their homes more energy efficient and save money on energy bills. Improvements include simple,

practical measures such as energy-efficient lightbulbs, reflective radiator panels, and thicker loft insulation. 800 households will receive direct support, with the upgrades fitted by ServiceStore experts,

and a further 1,200 households will be given the materials and tools to make improvements themselves.

Since the announcement, 428 direct support installations have been completed and over 400 households have collected DIY items. As well as saving residents money, the project will help reduce household carbon emissions as the Council continues to work toward its target of reducing the borough's net-carbon emissions to zero by 2030.



ServiceStore expert Haddon fits reflective radiator panels in a resident's home

The Breakfast Club



Cllr Alistair Strathern enjoys breakfast with pupils at Barn Croft Primary School

To help children in most need start each school day the right way, £300,000 has been distributed to primary schools in the borough to provide healthy breakfasts. Schools have reported on the benefits of providing free breakfast which include

better attendance, increased readiness to learn, and more engagement in morning lessons.

In addition to the breakfast pledge funding, families receiving support from the Early Help and Children's Social

Care teams will be eligible for vouchers to help buy essential goods such as food and utilities. The Council will continue to make sure the approximately 11,000 eligible families get the additional support they need to keep young people warm and fed this winter.

Citizens Advice Waltham Forest's top tips

1. Keep a personal budget

If you are struggling, keep a record of your income and outgoings and engage with any creditors. This will highlight any financial difficulties you may be facing, and creditors should provide tailored support. Ensure that priority bills such as rent, Council Tax, and gas and electricity are budgeted for.

2. Ensure that you are claiming all the benefits you are entitled to

There is a significant under-claiming of Pension Credit amongst pensioners. You can check if you are entitled to any extra benefits by contacting Citizens Advice on 0808 278 7838 or by using this handy benefits calculator: benefits-calculator.turn2us.org.uk

3. Seek extra financial support

There are several schemes that can help with the cost of bills. For example, the Charis Trust Fund can provide assistance with fuel arrears, Thames Water's Water Help and Water Sure Scheme can reduce ongoing water liability, and the Discretionary Council Tax Support Scheme may write off Council Tax arrears if financial hardship can be shown. Excluders will quickly pay for themselves.

Visit www.citizensadvice.org.uk for more advice on budgeting

WHERE TO GET HELP

Worried about your finances this winter? Struggling between paying for heating or eating? Looking for free family activities? Help is available in Waltham Forest – please don't suffer in silence. Visit [walthamforest.gov.uk/yourcrisisouraction](https://www.walthamforest.gov.uk/yourcrisisouraction) and find out what is available for you.

4 Pride of Waltham Forest Awards

THE PRIDE OF WALTHAM FOREST Awards

Celebrating the pride of Waltham Forest

Awards showcase
what makes the
borough brilliant

Hosted at Chingford Assembly Hall on Thursday 1 December, the glittering ceremony was compèred by local legend Alessandro Babalola (Soho Theatre and star of Netflix's Top Boy) and saw awards given out in 11 categories.

All nominations were made entirely by residents of Waltham Forest, with the winners chosen by a panel including Grace Williams,

so much to support friends and neighbours during difficult times. We received over 1,000 nominations from you for this year's Pride of Waltham Forest awards and picking winners was a really tough job.

"Each and every winner should be very pleased with what they have achieved and how much the community values their work. I am so proud to serve this remarkable borough and its incredible people."

Winners and their guests enjoyed entertainment from local organisation Leaders Community Dance Group and Youth Choir throughout the evening.

Alessandro Babalola said: "As a lifelong Waltham Forest resident, and as Soho Theatre Walthamstow's artist-in-residence and co-chair, I was honoured to be hosting this year's Pride of Waltham Forest awards. It was fantastic to meet all the winners in person at this year's ceremony, who make our diverse and vibrant borough such a great place to live and work."

Among the winners of the night was Gosia Jones, who won Volunteer of the Year for her work establishing the Friends of Ukraine appeal. Gosia has worked tirelessly to raise funds for vans, trucks, and aid.

She said: "I'm very happy that my work has been recognised by the local authority. When the war started, I knew that I had to do something. It's very demanding, but I will stop working when my help won't be needed."

Gosia, a Highams Park resident, teamed up with local business Coffee Treasure on Winchester Road, and they accept donations every day. One positive that came out of her work was the connections she made with her community: "I was amazed at how many parents from my daughter's school got involved. That was amazing, to see parents from both schools working together, loading up the lorries, sorting out donations. I knew these parents, but I never thought that we could become a very good and strong group of friends."

"It's a real pleasure to be able to celebrate those in our communities who have done so much to support friends and neighbours during difficult times"

Winner of the Health and Wellbeing Champion of the Year, The Farm Community Kitchen, has provided meals in Leytonstone since the Covid-19 pandemic.

"It's an amazing feeling to be recognised for what we've done since the beginning of Covid. It means the world to us to be part of this community, to give back and empower people. We want to just continue this work with the support of the residents, the community and the local authority."

It now also operates as a Community Kitchen, providing free, healthy, home-cooked meals to the local community during the cost-of-living crisis.



Leader of the Council, and Martin Esom, Chief Executive.

Cllr Grace Williams, Leader of the Council, said: "After the turbulence of the last few years, it's a real pleasure to be able to celebrate those in our communities who have done



WATCH HIGHLIGHTS OF THE AWARDS
CEREMONY HERE bit.ly/PrideofWF
OR SCAN THE QR CODE TO THE LEFT



Gosia Jones, Volunteer of the Year



Sweet sounds from the Leaders Youth Choir



Caz, The Farm Community Kitchen, Health and Wellbeing Champion of the Year

The full list of winners:

Waltham Forest for All Award:

Waltham Forest Women's Network, a volunteer-led women's organisation with over 90 per cent of women on the committee from diverse backgrounds.

Stronger Waltham Forest Award:

The Together Space offers a much-needed inclusive space for children who are often excluded during everyday life, catering especially to parents of children with special needs.

Community Culture Award:

Everyone on Boards, a group dedicated to empowering girls through skateboarding and other board sports, run by Aga Wood.

Community Sports Club of the Year:

Leyton Orient Walking Football Club provides both social and competitive walking football sessions, with a focus on providing a fun and supportive environment.

Health and Wellbeing Champion of the Year:

The Farm Community Kitchen, which twice a week has volunteers take cooked food to local people who cannot get out to shop and cook for themselves.

Local Business of the Year:

Stone Mini Market a zero-waste shop selling organic produce owned by Adrienne and Okan Aslan.

Climate Champion:

Friends of Queens Road Cemetery, who have helped transform the cemetery from a desert into a thriving wildflower and insect wilderness.

Volunteer of the Year:

Gosia Jones, who with her friends established the Friends of Ukraine appeal, and has worked tirelessly to raise funds for vans, trucks, and aid.

Voluntary and Community Sector Organisation of the Year:

Cann Hall Deen & Education Trust, which holds weekly food banks, feeds the homeless, runs youth and education clubs, and engages in a wide array of charity and fundraising activities.

Mayor's Public Service Hero:

Mehmet Hassan, a senior ranking officer in the Metropolitan Special Constabulary.

Leader's Civic Award category (three winners):

Anna Alcock champions the learning disability community, working with groups including Mencap and LDX, to highlight their value and diversity, encouraging wider acceptance in the community and inclusivity for all;

Julie Pell works tirelessly for the community in multiple roles, displaying endless strength and leadership whilst working with individuals on the verge of destitution or fleeing dangerous situation;

Project Zero fosters lasting relationships between all ages and sectors of the community.

GET WALKING AND CYCLING THIS YEAR IN WALTHAM FOREST



DR BIKE

Bring your cycle to one of our **FREE** Dr Bike sessions across the borough for a check-up. Our team of expert mechanics will check over tyres, gears, brakes and more, and if there is a bigger problem they will tell you what's wrong and provide an estimate of what it should cost at a local cycle shop.



To find out the dates and locations of our upcoming sessions, visit: www.cycleconfident.com/sponsors/waltham-forest/

CYCLE TRAINING

Anybody who lives, works or studies in Waltham Forest can receive free cycle training that is provided by our partners Cycle Confident. Our programme of cycle training ranges from individual one-to-one sessions, in groups or at schools.

To book a session visit: www.cycleconfident.com/sponsors/waltham-forest/

COMMUNITY CYCLE LOAN SCHEME

Anybody who lives, works or studies in Waltham Forest can loan a bike through the Council's community cycle loan scheme. The scheme is comprised of over 30 standard bikes and 10 cargo bikes. Bikes are available to loan for up to a month in exchange for a small refundable deposit.

To find out more information and to book a loan email: cyclehire@walthamforest.gov.uk



ALL ABILITY CYCLING CLUB

We work with Bikeworks to provide free weekly All Ability Cycling Clubs. Weekly sessions take place every Saturday alternating between Leyton Jubilee Park and Higham Hill Park between 10am and 12pm.

All equipment is provided and Bikeworks have a range of cycles including hand cycles, side by side cycles, recumbents and relaxed tricycles. Keep up to date with sessions and found out more online at www.bikeworks.org.uk

WALTHAM FOREST WANDERS

Explore your local neighbourhood with the Waltham Forest Wanders! We have developed nine walking and cycling trails packed into a pocket-sized booklet to support you to walk and cycle more for health and leisure whilst showcasing the borough's green spaces, local attractions, rich history, and famous faces.

Booklets are available in all Waltham Forest libraries or upon request by emailing cycling@walthamforest.gov.uk



FEEL GOOD WALKS

Come along and join a free, weekly Feel Good Walk! They are suitable for anyone to join and provide a great way for people to get out and about, meet new people and explore some of the beautiful green spaces Waltham Forest has to offer. Just turn up on the day, there's no need to book in advance.

For more information about walks in Waltham Forest, please contact feel.good@Walthamforest.gov.uk



For more information about walking and cycling in Waltham Forest, please contact: cycling@walthamforest.gov.uk
020 8496 3000

enjoy
WALTHAM FOREST


Waltham Forest

Maribel's story: Living with young on-set dementia

How a young carer used her experience to create a platform to help others



Maribel and her father Ray

Maribel Kirton was a teenager when her father was diagnosed with young-onset Alzheimer's. She uses her experience to support others in similar situations.

Maribel, who now works at Waltham Forest Council helping to prevent Violence Against Women and Girls, reflected, "Dad was the life and soul of the party who everyone wanted to be around. He still has a glint in his eye and the kindest smile."

Doctors initially failed to link Ray's symptoms to dementia due to his age and misdiagnosed him with depression. His Alzheimer's diagnosis came two years later, when he was aged just 52.

As Ray's independence diminished, Maribel and her family assumed caring roles.

Ray's wife acts as a full-time carer, while the three daughters visit often to care for Ray and provide respite for their mother. Carers do home visits and Ray regularly attends a day centre.

.....
"We want to provide the best support and services to all those affected by dementia"
.....

Caring for someone living with dementia can be emotionally and physically draining. The Dementia Hub hosts monthly carers' drop-in sessions and a carers' café. Carers First provides support for unpaid carers.

Maribel channels her experiences into tackling dementia stigma and reaching other young carers through her Instagram blog [@endalzheimers_ray](#)

Cllr Louise Mitchell, Cabinet Member for Adult Services at the Council, said, "Maribel's story is touching and encouraging in equal measure. As a borough working to become dementia friendly, we want to provide the best support and services to all those affected by dementia."

It's important to identify dementia symptoms at an early stage - visit a GP if you have concerns.

More info

You can get post-diagnosis information and advice from the Dementia Hub in Leyton or the Alzheimer's Society's Dementia Advisor service.

Contact the **Dementia Hub on 0208 558 0647** or [dementia.hub@walthamforest.gov.uk](#)

Refugees welcome in Waltham Forest

Borough has proud history of helping people fleeing persecution or conflict

People seeking refuge from war or escaping persecution can expect a warm welcome in Waltham Forest after the council officially applied to become a Borough of Sanctuary.

A motion was passed at a meeting of Full Council on Thursday 8 December 2022 to join the City of Sanctuary network and apply to be recognised as an official Borough of Sanctuary, joining other local authorities in offering a safe refuge for refugees arriving into the UK.

.....
"We are standing up for those facing persecution"
.....

The Borough of Sanctuary recognition will see the council commit to working with individuals with lived experience alongside community organisations and businesses to display the principles of the City of Sanctuary movement.

The Council will begin the process of receiving official recognition from City of Sanctuary. Part of that journey will include producing a strategy and local framework that will commit to supporting people seeking sanctuary in Waltham Forest.

Cllr Grace Williams, Leader of Waltham Forest Council, said: "We have a duty of care towards children and vulnerable and trafficked adults in our borough. This must extend to refugees and migrants who are fleeing persecution and conflict who have experienced tremendous disruption.

"We are standing up for those facing persecution and speaking out against the intent of the Home Office to make the UK unwelcoming for refugees, asylum seekers and migrants. I know residents will join me in saying with one voice: everyone is welcome in Waltham Forest."

Find out more about the Borough of Sanctuary application process by visiting [cityofsanctuary.org](#)



Waltham Forest has recently given a home to people fleeing conflict in Ukraine, Afghanistan, and Syria among others

Over the last few years, Waltham Forest has helped migrant communities a number of ways:

- Hosting 346 people escaping the war in Ukraine
- Providing wraparound support to 400 asylum seekers in contingency accommodation including financial, food and clothing
- Resettling 13 refugee families through the UK Resettlement and Afghan Resettlement pledge
- Helping over 3,000 people with holistic support including English lessons, social integration, volunteering, and employment
- The borough is currently supporting 66 unaccompanied asylum-seeking children
- Promoting fundraisers for new arrivals, including Afghan refugees

A healthy start to the new year

Working to tackle health inequalities in Waltham Forest



Working to ensure that everyone in Waltham Forest has the best chance of a happy, healthy life

Waltham Forest is the first council in London to work with the internationally respected Institute of Health Equity, led by Professor Sir Michael Marmot, to fight health inequalities within the borough.

The research highlights how life expectancy for residents in the south of Waltham Forest is up to seven years lower than in the north. It shows the issues that have driven this gap, including the Covid-19 pandemic and cost-of-living crisis.

especially those who are more likely to experience health inequality. The research shows how health inequalities in Waltham Forest can be affected by differences in housing, education, jobs and opportunities.

Cllr Naheed Asghar, Cabinet Member for Health and Wellbeing said: “As a council we are working hard to make sure everyone who lives in the borough, no matter their background, has access to key healthcare services and the support they need to help them lead healthier lifestyles.”

The Council will publish a plan this year outlining what it will do to ensure that everyone in Waltham Forest has the best chance of living a happy, healthy life.

“We are working hard to make sure everyone who lives in the borough has access to key healthcare services”

The team spoke to residents from across the borough,

More info

Find out more at bit.ly/HealthEqualitiesWF

Give the New Year a boost with a Covid-19 jab

Vaccinations are available across Waltham Forest

The New Year is a great time to find new ways to be healthy. One thing anyone can do is ensure their Covid-19 vaccinations are up to date. During the winter months there is a greater risk of catching infections and becoming ill, especially for those who are more vulnerable.

For anyone who has had their first and second Covid-19 jabs, the best way to stay protected is to get a booster shot. As well as the vulnerable and those at high risk, the booster is available to people aged 50 and older.

The first two doses of the Covid-19 vaccine offer a high level of protection, but to get longer-lasting protection it is necessary to get the booster dose. Covid-19 booster vaccines are available at pharmacies

across the borough.

When the time came for Belinda Calaguas and Richard Bennett, from Walthamstow, to have their booster vaccines they had no hesitation.

“The booster is available for vulnerable people, those at high risk, and anyone aged 50 and over”

Richard said: “I got the booster a couple of months ago, and so far, so good. I know that the booster will help to add to the immunity I have from previous stages of the vaccination. And, having caught Covid once, I now know that I can expect it to be relatively mild if I do catch it again - and I know this is because of the vaccine.”

Belinda agreed and said: “The first two vaccinations, and then my first booster, helped both me and the people around me to avoid serious illness resulting from catching Covid. Most of us have had it by now, but not seriously. I want to extend the effectiveness of the vaccine further into the future.”

Belinda encourages other residents over 50 who’ve had their first two Covid-19 vaccines to get their third shot: “Just do it! It’ll keep you safer from Covid, and it’ll make it less likely that you’ll carry Covid to other people you know and love. It’s quick, easy, and painless - so why not?”

More info

Find your local Covid-19 autumn booster clinic by visiting bit.ly/WFVaccines2023



Belinda and Richard have both had their Covid-19 booster vaccinations

Quality lettings,
decent homes



Lettings
Waltham
Forest



0%
**MANAGEMENT
FEE***

Offer valid until 31/03/2023
*Ts and Cs apply

Do You Have a Property to Rent?

**Waltham Forest Council's Letting Agency
can help you. We currently require
properties of all sizes.**

Lettings Waltham Forest guarantee you peace of mind with a hassle free service. Our Market Rent Scheme has plenty to offer you.

- Professional tenants (Key Workers prioritised)
- Current market rents paid
- Comprehensive tenant reference checks
- Free rent guarantee policy*
- Free photographic inventory*

- **020 8496 4865**
- **lettingswalthamforest@walthamforest.gov.uk**
- **www.lettingswalthamforest.co.uk**



A new lido for Waltham Forest

Low Hall announced as preferred location for new health and leisure hub with a lido at its heart

The last lido in the borough opened in 1936, and in recent years the demand for outdoor swimming for all ages has grown. Building a major health and leisure centre alongside a new lido will ensure that it has multiple uses, maximising the benefits to residents all year round.

Many longstanding residents will have fond memories of the old lidos at Whipps Cross and Larkwood, but as part of the site search and analysis, Low Hall stood out as the preferred location for the next generation.

Low Hall is positioned at the centre of the borough, with excellent walking and cycling routes nearby and three train stations within 20 minutes'

walk, including St James Street and Walthamstow Queen's Road, linking it to Chingford in the north, and Leyton and Leytonstone in the south. Recent engagement with over 800 local people as part of the Council's wider 15-minute neighbourhoods work showed a lack of leisure facilities was one of residents' main concerns.

Low Hall is already home to several sports facilities and if the development gains planning permission following extensive early public engagement, it will include investment from the Council to upgrade and improve the existing sports clubs.

Low Hall is popular with local walkers – and their dogs – and the wooded area that currently acts as a nature reserve will

remain as an integral part of the development. The site is Metropolitan Open Land and so the proposed lido and health and leisure hub will go through a robust planning process to ensure suitability.

Cllr Grace Williams, Leader of Waltham Forest Council, said: "Opening a new lido in Waltham Forest was one of our manifesto commitments and I'm happy to see we've now got a preferred site at Low Hall.

"Our ambition is to give a huge boost to the local economy with a new lido that will be accessible to young and old.

"We have already begun talking to local sports clubs who use Low Hall, and full public engagement will begin soon."

What happens next?

A business case will be prepared and an architect appointed who will draw up initial plans and explore the feasibility of the lido location further before updates are taken to Cabinet. The plans will be discussed with the public and other key groups this spring. This will include the opportunity to have a say on the facilities that could go alongside the lido. You can be sure of a big splash when more details are confirmed.



More info

Watch Cllr Grace Williams, Leader of Waltham Forest Council, talk about the proposed new lido at bit.ly/WFLowHallIntro

Please look out for more updates in our **Residents' News email newsletter**. See page 21 for information on how to sign up to receive this every week.



Enjoying open air swimming at the old Whipps Cross lido



Crowds at the former Whipps Cross lido...



The former lido at Larkwood



...The sounds of splashing could once again fill the air at Low Hall

Make yourself at home

New public square, fountain, and shops for all to enjoy

More than 150 new homes for social rent have been completed in Waltham Forest in the last few months.

The council's wholly owned development company Sixty Bricks has finished four new development schemes - The Brick Works, Hylands Road, and The Jazz Yard, all in Walthamstow, plus Whitethroat Court, Leytonstone. Housing management teams have been extremely busy helping families on the housing register list to move into their new homes.

.....
“Living in Highams Park is fab. I couldn't be happier”
.....

Sixty Bricks was set up by the Council to increase the supply of affordable housing in the borough - an issue that is regularly ranked as a top concern for residents. It provides homes across a range of tenures, and property sizes from studio flats to four-bedroom apartments for larger families are available.

The journey began two and a half years ago, when work started on its first housing scheme at Centenary House in Highams Park. Named in celebration of the 100th anniversary of the

first council housing estate in the country, the development consists of 45 new apartments with 50 per cent offered as affordable housing.

Francis, a Centenary House resident, said: “I was previously living in a two-bedroom apartment, but wanted to downsize as I was struggling with the stairs and the shower wet room. So, I registered on the housing wait list and was delighted when my application for Centenary House was accepted. My new home is great. Everything is so much easier as its all on one level, I'm no longer having a daily battle with the stairs, and I'm thrilled as I now have a bath. Living in Highams Park is fab, with so many local amenities to enjoy – shops, great restaurants, and a beautiful park. I couldn't be happier.”

Cllr Ahsan Khan, Cabinet Member for Housing said: “It's fantastic news we've been able to help families move into these new homes. When the Council set up its own housing development company, it was so that we could accelerate our affordable home building programme and we're now beginning to see the fruits of our labour.

“I'm really pleased that of the 299 new homes built, 188 are for social rent. This news will be a welcome boost to families who are in desperate need for safe, warm, and comfortable homes.

“Waltham Forest is recognised as one of the best places to live in London, but we need to continue our home building programme to meet the needs of our growing population.”

More info

Find out more by visiting the Sixty Bricks website
sixtybricks.co.uk



Francis in her new home at Centenary house



A lovely green view from Centenary House



Cllrs Grace Williams, Leader of the Council, and Ahsan Khan enjoy the view from the recently completed Hylands Road development



Amer has just moved into a new flat at Hylands Road

Coronation Square welcomes first residents

New public square, fountain, and shops for all to enjoy

The first residents have moved into their new homes at Coronation Square, Leyton, in a huge milestone for the project. The partnership project between Waltham Forest Council and developer Taylor Wimpey will provide 750 new homes when complete, with 50 per cent of them being affordable.

A new attractive public square and cultural space will be created called 'Market Square' and will feature a fountain surrounded by commercial space for shops and businesses, forming a new neighbourhood.

"This is just the beginning of a new neighbourhood"

Construction began in May 2021 and phase one of the development is due to

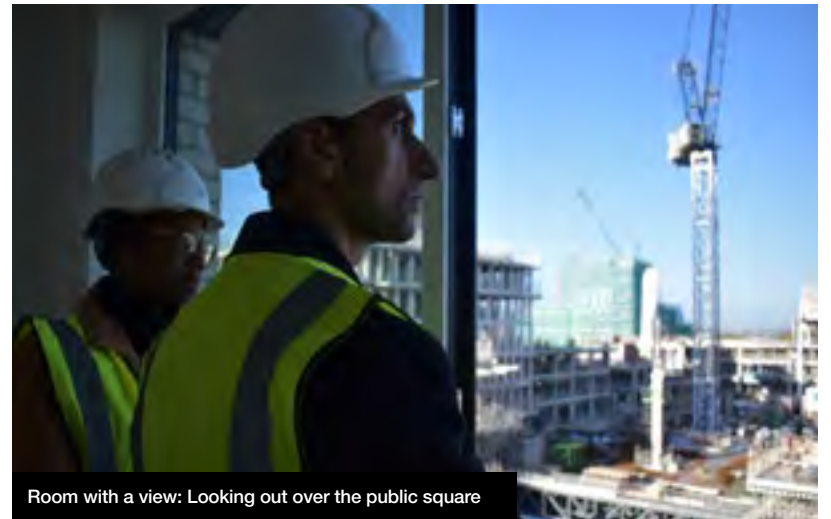
complete in 2024. Along with the construction of 429 new homes, phase one will see the opening of the new sports and leisure centre to replace The Score Centre, the new public square, the new nursery, and the health hub. Phase two, starting in 2024 and due for completion in late 2026, will see the existing Score Centre demolished and the remaining 321 new homes built.

Councillor Ahsan Khan, Deputy Leader for Waltham Forest Council and Cabinet Member for Housing and Regeneration, recently visited Coronation Square to view the new homes. He said: "Seeing the new homes at Coronation Square and meeting residents who are moving in soon shows that this will be an amazing place and a catalyst for much needed growth in this part of the borough. Not only is Coronation Square providing excellent, energy efficient and affordable

housing for Waltham Forest residents, but it's also creating great work opportunities for local people. This is just the beginning of a new neighbourhood where people can access most of the things they need within 15 minutes of their home."

More info

Find out more about Coronation Square by visiting bit.ly/CoronationSquare



Room with a view: Looking out over the public square



What's cooking: A kitchen at Coronation Square



Waltham Forest resident Darren gained new skills through an apprenticeship

Construction at Coronation Square

Darren is a Waltham Forest resident who has completed an apprenticeship. Darren now works as Apprentice Plumber at Coronation Square. Speaking about his experience, Darren said:

"About three years ago, I applied for a couple of apprenticeships because I wanted to change my job role. Then coronavirus happened, and I thought: that's me done. Luckily enough, I applied for an apprenticeship through Waltham Forest Council, got an interview and that's how I got the role here as a plumbing trainee.

"I live in Leyton, so I know the area well. I grew up on the estate opposite – I pop in to see my mum at lunchtimes and I can walk to work every day. It's awesome.

"The way Coronation Square has been built, you've got the communal area and the homes

with the shops underneath and you're going to have the sports centre too. Hopefully where you've got people in a small area, but you've got local shops there, it'll bring people together like it used to.

"I do take pride in being a part of the construction side of Coronation Square, because when you've grown up somewhere, and my kids are growing up round here, you want them to have something nice that they can go to and enjoy themselves and it feels safe sending them there."

More info

Looking to get into construction? There's plenty of local opportunities for Waltham Forest residents. Find out more by emailing opportunitiesteam@walthamforest.gov.uk

A HEALTHIER WALTHAM FOREST STARTS HERE

Whether you're taking your next steps on your fitness journey or you're looking to stay in shape, you'll find everything you need at your local Better leisure centre in Waltham Forest.

Join the movement at
better.org.uk/waltham-forest



Apply for the Healthy Start Scheme



YOU WILL
SAVE £204
AT LEAST PER YEAR



To find out if you can get support and for more information scan the QR code or go to:
bit.ly/HealthyStartSchemeWF

Get help to buy healthy food and milk and collect free healthy start vitamins

For more information on support and services for under 5s in Waltham Forest, visit www.walthamforest.gov.uk/beststartinlife



BOOST YOUR IMMUNITY



○ FLU JAB
+ COVID-19
○ BOOSTER

Aged 50 to 60? Flu and Covid-19 can be life-threatening and spread more easily in winter.

If you are over 50, you need to boost your natural immunity and protect yourself from these viruses.

Don't delay, book your vaccinations now.



**Find your nearest vaccine clinic:
www.walthamforest.gov.uk/VaccineClinics**



Where communities and coppers connect

Weekly Pop-up Police Stations give residents face-to-face time with local law enforcement



Local residents visit Leyton's Pop-up Police Station with Cllr Khevyn Limbajee and Inspector Rob Sewell.

On a rainy Wednesday afternoon PCSO Azhar Choudhury reflects on the benefits of face-to-face contact with residents: "Today we were told about drug use in a nearby street which we were already targeting with patrols and stop and search. A two-way

discussion has really helped us understand the specific issue and we can now adapt our response accordingly."

One of the programmes' chief architects, Cabinet Member for Community Safety, Cllr Khevyn Limbajee, said: "I think holding Pop-up Police Stations in

familiar community spaces like this makes all the difference.

"Having Council officers here as well adds to the informal atmosphere – no issue is too big or too small, all concerns are open to discussion."

Running until the end of February, the Pop-up Police Stations programme has greatly helped increase police visibility across the borough since mid-December.

"In Walthamstow we had six or seven residents come in at one time to talk about issues that affect them - it could be anti-social behaviour, harassment from neighbours - ongoing issues they have been waiting to talk to us about," says Inspector Rob Sewell. "There's only one police station in the borough, so these sessions give residents the opportunity to speak with us at a local level.

"It reassures the residents that we are here, because a lot of people say they don't see police officers out and about - well, here we are. Come and talk to us."

More info

Find your nearest Pop-up Police Station by visiting walthamforest.gov.uk/pop-uppolicestations

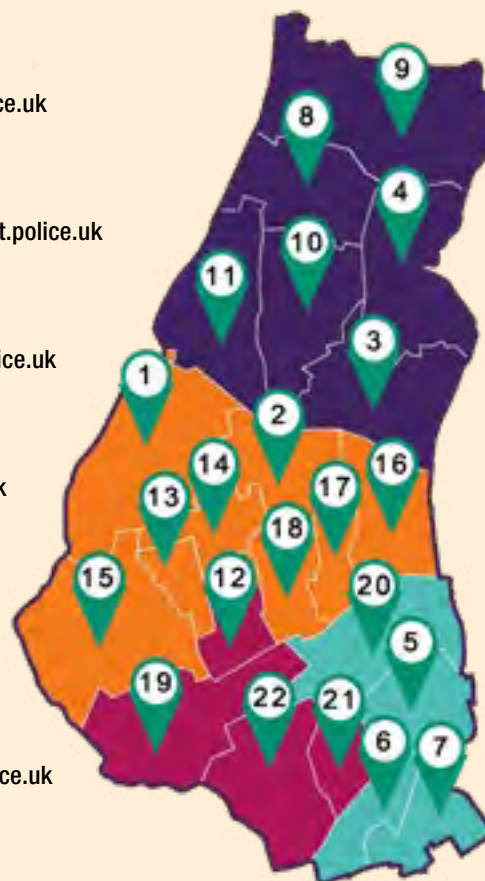


Safer Neighbourhood Teams

Safer Neighbourhoods Teams (SNT) provide a dedicated, permanent and visible presence in local wards across the borough. These local Met officers work closely with the Council, community leaders and residents to solve local problems and identify priorities. Contact your local SNT to share your non-urgent concerns regarding anti-social behaviour, graffiti and other quality-of-life issues. If you are unable to get in contact with your SNT then please call 101. For urgent matters please call 999.

- 1. Higham Hill**
T: 02087212644
E: NEMailbox.SNTHighamHill@met.police.uk
- 2. Chapel End**
T: 02087212647
E: NEMailbox.SNTChapelEnd@met.police.uk
- 3. Hale End & Highams Park South**
T: 02087212646
E: NEMailbox.SNTHaleEnd&HighamsPark@met.police.uk
- 4. Hatch Lane & Highams Park North**
T: 02087212641
E: NEMailbox.SNTHatchLane@met.police.uk
- 5. Leytonstone**
T: 07884114160
E: NEMailbox.SNTLeytonstone@met.police.uk
- 6. Cathall**
T: 02087212767
E: NEMailbox.SNTCathall@met.police.uk
- 7. Cann Hall**
T: 02087212036
E: NEMailbox.SNTCannHall@met.police.uk

- 8. Endlebury**
T: 02087212650
E: NEMailbox.SNTEndlebury@met.police.uk
- 9. Chingford Green**
T: 02087212651
E: NEMailbox.SNTChingfordGreen@met.police.uk
- 10. Larkswood**
T: 02087212648
E: NEMailbox.SNTLarkswood@met.police.uk
- 11. Valley**
T: 02087212901
E: NEMailbox.SNTValley@met.police.uk
- 12. Markhouse**
T: 07920233814
E: NEMailbox.SNTMarkhouse@met.police.uk
- 13. High Street**
T: 07843291115
E: NEMailbox.SNTHighStreet@met.police.uk
- 14. William Morris**
T: 02087212643
E: NEMailbox.SNTWilliamMorris@met.police.uk



- 15. St James**
T: 07827307295
E: NEMailbox.SNTStJamesWard@met.police.uk
- 16. Upper Walthamstow**
T: 07827307195
E: NEMailbox.SNTUpperWalthamstowWard@met.police.uk
- 17. Wood Street**
T: 02087212768
E: NEMailbox.SNTWoodStreet@met.police.uk
- 18. Hoe Street**
T: 02087212642
E: NEMailbox.SNTHoeStreet@met.police.uk
- 19. Lea Bridge**
T: 02087212797
E: NEMailbox.SNTLeaBridge@met.police.uk
- 20. Forest**
T: 02087212645
E: NEMailbox.SNTForest@met.police.uk
- 21. Grove Green**
T: NA
E: NEMailbox.SNTGroveGreen@met.police.uk
- 22. Leyton**
T: 02087212037
E: NEMailbox.SNTLeyton@met.police.uk



Give your child the...

Best Start in Life



PLAY LEARN HAVE FUN



FREE Childcare and Early Learning for 2, 3 and 4-year-olds

For more information about the Best Start in Life, visit walthamforest.gov.uk/beststartinlife

All 3 and 4 year olds in England are eligible for 15 hours free childcare and early learning per week from the term after their 3rd birthday. Eligibility criteria applies for 15 hours funding for 2 year olds and 30 hours funding for 3 and 4 year olds.



BECOME A WALTHAM FOREST CARER



Up to
£485
per week



24/7
Support



Up to
66%
taken off
Council Tax

Join a virtual information event on
Wednesday 1 February, 6pm
or **Thursday 2 March, 11am**

Register here for access; www.fosteringwalthamforest.co.uk





Waltham Forest



ADVERTISING

NEWS

DID YOU KNOW?
WALTHAM FOREST NEWS...

IS DELIVERED TO EVERY HOUSEHOLD IN WALTHAM FOREST

ADVERTS START FROM JUST £180

IS THE LARGEST NEWSPAPER IN THE BOROUGH

HAS A CIRCULATION OF 120,000 EVERY ISSUE

THERE'S NEVER BEEN A BETTER TIME TO ADVERTISE.

Talk to us for a free consultation on how we can boost your business, contact us now:

ADVERTISINGWFN@WALTHAMFOREST.GOV.UK

COMMUNITY WALKING & CYCLING FUND



APPLICATIONS NOW OPEN

Grants are available for community-focused projects that support health and wellbeing through walking, cycling & other modes of active travel.



EMAIL: CWCF@WALTHAMFOREST.GOV.UK
APPLICATIONS CLOSE 01 MARCH 2023



enjoy
WALTHAM FOREST

SCAN THE QR CODE TO FIND OUT MORE!



Charging ahead | EV charging network grows to over 500 sockets

Waltham Forest Council is developing a network of public electric vehicle (EV) charging points to encourage residents, businesses, and visitors to adopt more sustainable methods of transport. There are now 508 sockets available across the borough for charging vehicles.

In January 2023, in partnership with Liberty Charge, Waltham Forest Council installed the latest batch of EV charging infrastructure - 47 fast 22kW dual-socket units are now available at 29 locations in the borough.

.....
“By 2026, the Council hopes to install lamp column charging points in every Controlled Parking Zone”



Cllr Clyde Loakes, Deputy Leader of the Council for Climate and Air Quality, and Neil Isaacson, Chief Executive Officer of Liberty Charge, at the launch of Malvern Road E11

At three of the new sites, charging points will support Car Club operators to electrify their fleets. These locations are Bulwer Road E11, Edward Road E17, and Essex Road South E11. Car Clubs are becoming increasingly popular in Waltham Forest and provide a great alternative to private car ownership.

The rest of the network consists of 236 single socket 5.5kW lamp column charging points operated by Ubitricity, 62 fast 7kW chargers operated by BP Pulse, and four rapid 50kW units also operated by BP Pulse. The network will continue to grow, and by March 2024 there will be at least a thousand

sockets available. By 2026, the Council hopes to install lamp column charging points in every Controlled Parking Zone, ensuring 80 per cent of residents are within a short walk of a fast 7-22kW charger. There will also be a rapid 50kW+ unit in every town centre.

Share your views.

There is an online registration form for residents and businesses to request a public EV charging point. You can complete it by visiting www.surveymonkey.co.uk/r/EV-EOI

More info

Further information and a map of EV charging points in Waltham Forest can be found online at www.walthamforest.gov.uk/EV

Park and thrive | Apply for a parklet in your neighbourhood today



Tony Spearpoint and neighbours enjoy their new parklet

Waltham Forest Council continues to deliver a range of measures to ensure local streets work for everyone. As part of this programme, the community parklets scheme gives residents the opportunity to think differently about how they use the spaces outside their homes.

Community parklets are public green spaces designed and delivered by residents that include features such as seating, planting, games, mini-libraries and information boards. Whilst small in size, parklets can have a big impact on the surrounding environment.

Toby Spearpoint, resident and community parklet creator, said: “We were looking at ways to use the space outside our house for something other than a car and we thought about parklets. We now have seating, bike parking and a seed library – now families and older people have started using the space, and it has become a community hub. A lot of wildlife

.....
“There have only been positive outcomes and it has brought people together”

also arrived when the plants went in helping to boost the biodiversity of the space. The parklet has humanised the street and provided a welcome resting point. There have only been positive outcomes and it has brought people together. I highly recommend one on every street.”

Council officers are happy to work with residents every step of the way to ensure they have everything needed to deliver a great scheme - there is even a grant available to help support with the costs. So what are you waiting for?

More info

For further information and to register your interest, scan the QR code:



Find your path | Kickstart your career in Waltham Forest

Waltham Forest Council's jobs team can help you find the best path to professional success, whether it's through gaining new skills, getting help applying for your next job, or receiving small business support...

Seekay's apprenticeship story

"A platform to transform my aspirations into reality"

I applied to a civil engineering apprenticeship at John Wood Group (now WSP) with the help of Waltham Forest's Steps into Work team, who recommended me to them, passed on my CV and gave constant guidance and support throughout. Paul, my contact at the council, called me to give me the good news that I'd passed the initial interview, and I landed the job shortly after.

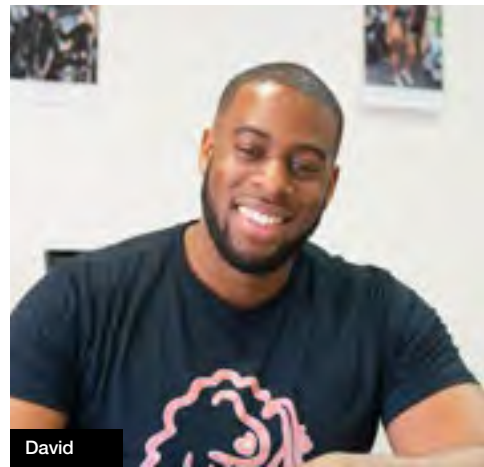
I'm currently studying MSc Civil Engineering part-time at London South Bank University, alongside working on-site with the NEC supervision team for North London Heat and Power Project. Since

I started, I've been developing my knowledge through construction site experience, as well as working in a variety of roles from civil to architectural and MEP engineering, getting the right skills to become an ICE Chartered Engineer in a few years' time.

Going from having no experience in the Civil Engineering industry to working on a full-time site supervision role on the Major Project division, I feel very fortunate for Paul's assistance throughout this journey. It gave me a platform on which I could transform my aspirations into reality.



Seekay



David

David, Red Light Busking

"Council support has been key to our growth"

The point of Red Light Busking is to transform a space into a whole new vibe. We explore different cultures through music, art and storytelling to bring life to your high street walk.

The initial idea was to get musicians in shop windows, bringing life to high streets. We won the Council's Make it Happen Grant in 2019, meaning I could put on a mini-festival of shopfront performers as part of the Borough of Culture. With this, the Council put on workshops helping us think critically about development, and that workshop leader has continued to be a massive help.

Then in 2021 we got the Council's Growth Fund Grant, part of the

government's post-Covid support scheme, which helped me hire a set designer and producer. In general, Council support has been key to our growth.

Our latest exhibition is Dem Live a Foreign, an exploration of the influence of migrant cultures on London. The first part of it was around Caribbean culture, exploring the roots of carnival through words, photos, music and food. Our audience didn't want to leave! The next part, on Somali culture, took over the Council's space at 228 Chingford Mount. We've also been hosting a music studio project for young people in care referred to us, showing them a creative path forward.

Abdulai, Learner

"With new skills you can move forward"

When I moved to London from Portugal, I couldn't speak English at all. Different language, culture, weather – I really struggled. My goal was university – but first I needed to find a job and learn English.

In 2019 I found the Adult Learning Centre, and I spent two years studying hard to gain my ESOL qualifications. The process was so amazing and rewarding, and all the classes had such interesting programmes. I met people from so many different cultures. We'd celebrate our differences, like – what's it like in Bangladesh? Or Guinea-Bissau? I'm still friends with a lot of them.

Once I'd learned English I got a job at Westfield Stratford helping customers, and I'm constantly encouraging all my colleagues to do as I did – go to an adult learning centre, learn a language or learn anything, because with new skills you can move forward.

Now I'm a student at the University of West Scotland's London campus, and the next step is to do a Masters. But it started with my Adult Learning Centre course. Without the course, the teachers, I couldn't be here today saying these words.



Abdulai

Whether it's support getting your dream job, help taking your business to the next level, or gaining skills and qualifications you need, find all you need at:

WALTHAMFORESTJOBS.ORG



Construction Jobs Fair

Where: London Academy for Sustainable Construction, Leytonstone

When: Tuesday 7 February, midday - 4pm

What: Get access to some of the most exciting jobs in construction and the built environment. Dozens of the capital's biggest construction employers will be on-hand with live jobs, and plenty of advice around how to apply. Bring a CV along to get on-the-day interviews. bit.ly/WFconstruction



Apprenticeship Jobs Fair

Where: Walthamstow Library

When: Friday 10 February, 10am-4pm

What: Talk to a variety of employers with apprenticeship opportunities. An apprenticeship is a great route into an industry, open to anyone over 16. Every year in Waltham Forest we support hundreds of residents into apprenticeships in their dream careers. Find out more about them and why they might be the best path for you. More info about employers available on our website. bit.ly/WFapprentice



ADVERT

Two new discounted housing developments for first-time buyers come to Waltham Forest

Pocket Living is on a mission – to give back to the Londoners across the Capital who make the city tick. We do this by building new housing developments exclusively for local first-time buyers, at a 20% discount compared to the local market value, with residents owning 100% of the property.

It is not Shared Ownership and there's no extra rent to pay but gives people on middle incomes or those who earn too much for social housing, but not enough to buy a new home on the open market, the opportunity to get their foot on the housing ladder in the borough they love.

Having already delivered Gainsford Road E17, which helped 45 locals buy their first homes, we are pleased to have now launched the first phase of new homes at Osier Way E10 in Leyton, where the apartments are available at a 20% discount to the local market exclusively for first-time buyers who live or work in Waltham Forest.

Now for sale are one and two-bed discounted homes. The two-bed properties have private terraces and some are wheelchair adaptable and available to those who require wheelchair accessible housing.

Like all Pocket Living apartments, the homes at Osier Way are sustainable

and eco-friendly, with showers fitted with EcoSmart technology that requires 60% less water than conventional showers. They are well-insulated to retain heat, and look to minimise day-to-day energy costs, while also making the most of the power of the sun as the floor-to-ceiling windows allow daylight to flood in.

The open-plan living space is a blank canvas, a chance for homeowners to impose their personality. We've seen homes painted green, blue, pink and orange, wallpaper of all styles, chandeliers, Moroccan rugs and Spanish tiling. We've noted scarlet velvet sofas, art that defies description and interiors with more plants than furniture. This is your chance to make your home your own.

Osier Way also has a large selection of spaces to enjoy. This includes two roof terraces; the Active Garden for exercise and play and the Productive Garden where residents can grow their own fruit and veggies.

Bookable via the Pocket App, there are five other spaces to explore, including an exercise room for HIIT and aerobics workouts, a co-working lounge, a social room that dons a pool table and a projector screen and an office-style space designated for quiet working. To encourage further togetherness, residents will be



Osier Way has two roof terraces, including a space to grow your own fruit and veggies.

able to host dinner parties in the dining rooms that come equipped with their own kitchens.

The one-bedroom apartments are available from £274,000, while the two-bedroom homes start from £400,000.

Our third development in the borough – Forest Road E17 in Walthamstow – will also be launching later this year, delivering a further 90 one-bedroom discounted Pocket homes for Waltham Forest's first-time buyers. Eight of the homes will be adaptable for wheelchair users and some have private terraces.



To find out more information about Pocket and our new homes, and to check your eligibility, visit www.pocketliving.com or call us on 020 7291 3683.

pocket

Finding Somewhere to Belong

How we're helping children in Waltham Forest get the Best Start in Life

There are plenty of great events and schemes for little ones and their parents or carers to enjoy in Waltham Forest.

Family Hubs offer sessions for children with special educational needs or disabilities (SEND). These include Somewhere to Belong, delivered by local Best Start in Life partners, and the Lloyd Park Children's Charity. They support families and children with SEND with access to different professionals such as speech and language therapists, early help, and specific information advice and support services.

Walthamstow dad, Sorab, and his 4-year-old daughter, Colette, are regulars at these sessions. He said: "The Family Hub has been a lifeline for us. In December 2021 we found out that Colette has communication challenges. "The team at Somewhere to

Belong guided us on what was available in the borough for SEND children and their experience allowed them to engage with our daughter and help us take further steps into building Colette's communication skills and improving her attention span.

"We also got to meet other parents who were going through the same emotions as us and some of these have become close friends.

.....
"Somewhere to Belong is allowing Colette to learn that being around other people can be beneficial and enjoyable"

"As a two-dad family, we have experienced homophobia in the borough, but we feel safe, welcome, and supported by the Family Hub and the team at Somewhere to Belong.

"Somewhere to Belong is allowing Colette to learn that being around – and with – other people can be beneficial and enjoyable. She particularly likes the singing, and the team has taught us to use specific play and sing techniques to help her talk and maintain attention.

"We do it every morning now and it is a lovely moment of bonding and learning for all three of us.

"We are grateful for the support of the teams at Somewhere to Belong and the Family Hubs. It has greatly helped our family and we know it will have a lasting positive impact on little Colette as she grows into the world."



Walthamstow dad, Sorab, plays with his daughter Colette at a Somewhere to Belong session, Walthamstow Toy Library

More info

All parents, carers and families are welcome at Waltham Forest hubs. Find your local Family Hub and learn more about the local support for your child to get the best start in life at walthamforest.gov.uk/beststartinlife

Want to know what's going on in Waltham Forest?

How we're keeping residents informed

Do you have an interest in joining in with great events and making new friends in Waltham Forest? Join thousands of borough residents and sign up to receive the weekly Residents' News email newsletter.

You will get regular updates on Council services plus information on local support available on a huge range of subjects, from heating your home during the cost-of-living crisis to finding jobs and training opportunities.

.....
"It's a great way to keep up with all the free and fun things going on in Waltham Forest"

You'll find information on:

- free events around Waltham Forest
- people and businesses doing amazing things across the borough
- financial and wellbeing support for residents

You can also have your say on the future of your neighbourhood by receiving details of the latest local consultations.

"It's packed full of helpful and interesting news."

Nusreen, Walthamstow

"It's a great way to keep up with all the free and fun things going on in Waltham Forest for families."

Adrian, Leyton

"Since the pandemic I've been far more engaged with my local community and Residents' News is a major part of maintaining that connection. Not a week goes by without me learning about an event or service that is useful to me or someone I care about."

Dominique, Leytonstone

"It's a useful way to find out what's going on and what's being planned in my area and in the wider borough."

Katie, Chingford



Sign up by scanning the QR code or visiting bit.ly/ResNewsWF



Quit Smoking Start Saving

A free stop smoking service is available to people who live and work in Waltham Forest provided by Queen Mary University of London.

This includes a free, confidential service offering advice, information and support to smokers who wish to quit smoking.

What we offer:

- 12 Week Plan
- Nicotine Replacement Therapy
- Face-to-face Support

For free support to quit smoking call Quit Right Waltham Forest on 0207 882 8230.



Scan the QR code or search quitrightwf.org for more information.



Concerned about your alcohol or drug use?

If substance or alcohol misuse is affecting your life or that of someone you know, remember that help is available.

Change Grow Live is a free, safe, and confidential drug and alcohol service for all adults, young people, and families in Waltham Forest.

Get comprehensive and extensive support with a personalised support plan, counselling sessions, fast track mental health assessments and access to support groups.

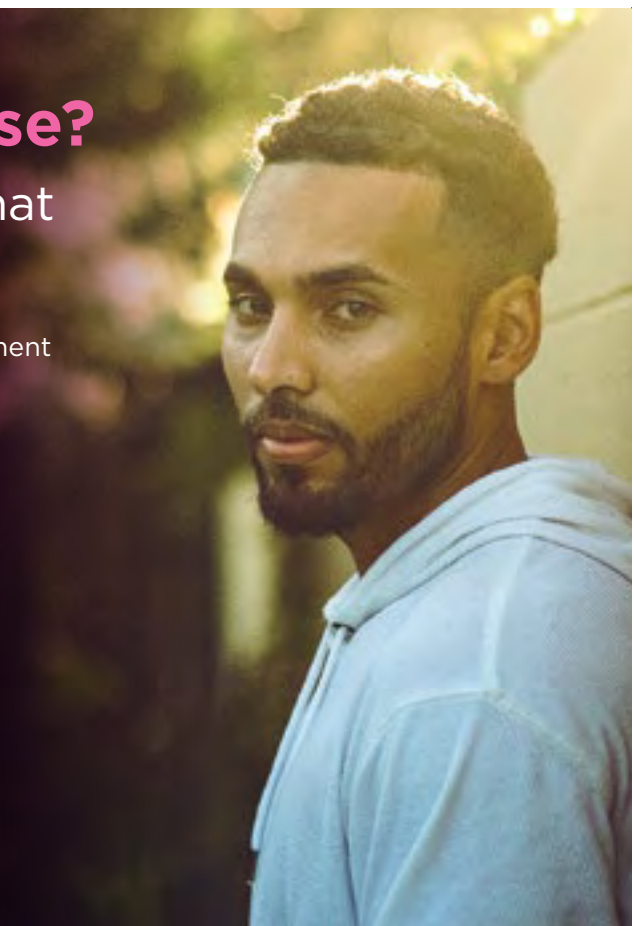
We also offer:

- A wide range of advice and information
- Access to medical assessment and treatment
- Support with housing services
- Family and carers support

If you would like to access any of our judgement free and confidential services, please get in touch or pop into our Walthamstow offices.

Change Grow Live Waltham Forest
1 Beulah Road
Walthamstow
E17 9LG

Needle exchange and naloxone (overdose prevention) is also available at our adult treatment hub - please call ahead to arrange pick-up.



For more information scan the QR code or visit: bit.ly/WFChangeGrowLive

T: 0203 826 9600
cgl.walthamforest@cgl.org.uk
f ChangeGrowLive | t CGLinWF



Drug and Alcohol Service
WALTHAM FOREST



Good to grow

Queens Boundary Community group volunteers are helping their local community

It's a crisp Sunday morning and a group of volunteers from Queens Boundary Community group are busy at work in Walthamstow Cemetery planting bulbs, weeding and clearing away litter.

The planting in Walthamstow Cemetery is the beginning of a rewilding project to transform the 12 acres of greenspace into a place to enjoy nature, exercise and become a haven for wildlife, while remaining respectful of the graves of the people buried there.

"We've found we're able to contribute to our community in many different ways"

Caz Scott has been volunteering with the group for ten years. "A big part of what we do is bring people together to support biodiversity and help make our greenspaces more climate resilient.

"Planting the free bulbs the



Green fingers - Jacqui Chapman, a Queens Boundary Community group volunteer, busy planting bulbs

Council gave us has really helped our rewilding work in the cemetery, and it will bring colour and attract insects to the 19 street flowerbeds we look after colour this spring."

As well as gardening, the group meet up regularly to help others, from providing food parcels for vulnerable members of their community to organising free basketball sessions for young people and

raising money for local schools. Lizzie Children is Chair of the Queens Boundary Community and said: "From our origins as a group of keen gardeners we've evolved into fundraising, friendship, and trying to help our neighbours wherever we can. I think when you have such an energetic group of people like us, we've found we're able to contribute to our community in many different ways."



Blooming marvelous - Queens Boundary Community group volunteers take a well-earned break from planting

Cllr Vicky Ashworth, Cabinet Member for Jobs, Social Inclusion and Equalities, said: "There is so much great work being done by our volunteers across Waltham Forest.

"Our volunteers provide a lifeline to some of our most vulnerable residents, help make our greenspaces more beautiful and climate resilient, and give everyone who lives in our borough a way to build new

friendships and give back to our communities. Thank you to everyone who helps us and get in touch with any local volunteer group if you think can spare a few hours to help out."

More info

Find out more about volunteering in Waltham Forest: bit.ly/WFVolunteering

Memorial garden for Queen Elizabeth II coming soon

Public will be able to enjoy new garden at Fellowship Square later this year

Work will begin on the Queen Elizabeth II Commemorative Garden at Fellowship Square this spring.

The Council aims to open the new public space, which will incorporate the late Queen's favourite flowers, in the summer of this year, alongside a new sensory garden.

The garden will incorporate the late Queen's favourite flowers

Chestnuts Field will be open and accessible throughout the works but the access point through Fellowship Square, between the Town Hall and Chestnuts Field, will be closed for approximately five months from Monday 13 February. Other access points at the Feel Good Centre and Spruce Hills Road will remain open.



An artist's impression of how the garden may look

More info

Find out more about the transformation of Fellowship Square at walthamforest.gov.uk/fellowshipsquare or scan the QR code.



Queen Elizabeth II and Prince Philip visit the borough in 2012

Ride here, ride now

3,000 more secure bike storage spaces coming to Waltham Forest

Four new Cycle Hubs are opening at stations in Blackhorse Road, Chingford and Highams Park, creating 186 affordable, secure, and safe indoor cycle parking spaces for local people.

People living in Waltham Forest will also benefit from an extra 3,000 secure Bikehangar spaces in residential areas across the borough by the end of 2025, helping to reduce the substantial waiting list for residential cycle storage.

Waltham Forest already has 700 of the hugely popular Bikehangars on its streets as in response to the huge increase in cycling over recent years in the borough – up by 71 per cent between 2019 and 2021 alone.

Leyton dad Richard said: “Cycling is a big part of life in Waltham Forest and I can’t wait to get out on my bike again.”

Two of the new cycling hubs are at Blackhorse Road Station, creating 160 extra cycle spaces



Wheel help you - Waltham Forest is one of the best places in London to cycle

in total, and two new hubs at Chingford and Highams Park stations each have 26 spaces.

The four new cycle hubs will bring the total up to 11 in Waltham Forest, the highest number of cycle hubs of any London borough, with all of the new hubs open by spring 2023.

Cllr Clyde Loakes, Deputy Leader

.....
“Cycling is a big part of life in Waltham Forest and I can’t wait to get out on my bike again”

and Cabinet Member for Climate and Air Quality, said: “Cycling and walking is good for you physically and mentally and our support

and expanding active travel transport infrastructure is key to building a greener and cleaner borough.”

More info

Visit enjoywalthamforest.co.uk for more information about cycling in Waltham Forest.



Blackhorse Road Hubs are secure and safe storage for bikes

First exhibition of 2023 at William Morris Gallery coming soon

A new exhibition examining the legacy and influence of fashion designer Ashish Gupta opens at the William Morris Gallery on Saturday 1 April. Ashish: Fall in Love and Be More Tender will be available to enjoy at the iconic Walthamstow museum Tuesdays to Sundays 10am to 5pm until September.

A new exhibition examining the legacy and influence of fashion designer Ashish Gupta opens at the William Morris Gallery on Saturday 1 April. Ashish: Fall in Love and Be More Tender will be available to enjoy at the iconic Walthamstow museum Tuesdays to Sundays 10am to 5pm until September.

Ashish is a pioneering voice in the fashion



It is the first major exhibition of Ashish Gupta's fashion designs

industry whose work challenges stereotypes, showcases diverse identities, and explores the role that clothing can play in the politics of inclusion. Ashish’s designs have been worn by global icons including Beyonce, Debbie Harry, Hunter Schafer, Rihanna, Charli XCX, and Taylor Swift. The exhibition will feature

a specially commissioned film and new photography by Ashish Shah, a rising star in fashion documentation.

Entry to the William Morris Gallery and exhibitions is free, although visitors are encouraged to make a £5 donation to help keep the venue running.



The William Morris Gallery, Walthamstow, in all its glory

Everybody's welcome! Help us shape our new Physical Activity & Sports Strategy

Waltham Forest is committed to improving sports facilities and leisure facilities for all. We recognise that to enable more residents in the Borough to get physically active our leisure offer needs to adapt to meet the changing needs of its residents.

That's why we want to hear from you to help us shape our new Physical Activity and Sports Strategy by completing a short online survey.

The strategy will set out the Council's priorities to improve physical activity participation, while reducing inequalities in activity levels across the area over the next 5 years (2023 - 2027).

Residents are invited to share:

- How active they are;
- How important being physically active is to them;
- Which activities people take part in, where and when, whether they take part alone or with others, and their reasons for taking part in activities;
- Details of any barriers that prevent them from being active.



The survey can be completed by copying the following link into your web browser or scanning the QR code:
bit.ly/WFPASportsSurvey



The survey will close on Friday 24 February 2023. Residents views provided within the consultation will help inform the final strategy, to be published later in the year.



Take control of your health in 2023!

Take the two-minute Alcohol Test to find out if you're a low, increasing or high risk drinker

- It's free and confidential
- Access personalised information
- Find local support
- Book free online coaching sessions



Scan the QR code or search
drinkcoach.org.uk



Need additional **support** with your drinking? Access **free*** and **confidential** online coaching sessions with an Alcohol Specialist. Use the code **WFWC** when booking your sessions.

*Residents are entitled to a maximum of six sessions worth £330, paid in full by Waltham Forest Council

WE ARE HIRING

We are recruiting Drivers, Operatives
and Weekend Workers!

Join the Waste & Recycling Collection and
street cleaning services in WALTHAM FOREST



Urbaser is Hiring HGV/LGV Drivers You will immediately start working as HGV/LGV Driver!!!!



Join the Urbaser Waste, Recycling, Collection
and Street Cleansing Team at Waltham Forest.

Your Role

HGV Driver, good working hours and competitive rate paid.

As a Class 2 HGV Driver, you will be an ambassador for Urbaser out on the road, where you will ensure that our values are upheld, and you will be driven to provide first-class customer service – you will truly be the face of Urbaser.

As a Class 2 HGV Driver, you will work as part of the Refuse, Collection and Streets team which operates in the Waltham Forest Borough providing Refuse, Collection and Street Cleaning Services for residents of the Borough and you will be supporting both reactive and planned collections and cleansing services.

What you'll need to succeed

Class 2 License and CPC is essential. We have both Permanent and Temporary Contracts available. You will need to be reliable as well as having good time keeping.

The hours are covering different shifts.

About Urbaser

Urbaser is a reputable company that provides value and added services to local councils and a world leader in performing environmental activities in municipal services and waste treatment.



Ask for a recruitment form today, or contact:
hr@urbaser.co.uk



KIDS FOR A QUID



ALL JUNIOR TICKETS £1!

Leyton Orient vs Rochdale
Tuesday 14th February | 7:45pm Kick-Off

LOFC.LINK/TICKETS

Highways

**LONDON BOROUGH OF WALTHAM FOREST
WAITING AND LOADING
RESTRICTIONS, CHANGES TO THE
PROVISION OF PARKING PLACES, BAN
ON VEHICLES, EXEMPTION ON RIGHT
HAND TURN BAN FOR CYCLISTS AND
MINOR CORRECTION TO ORDERS TO
REFLECT EXISTING HIGHWAY
ARRANGEMENTS (LBWF BATCH 20)
T40(22)**

**The Waltham Forest (Charged-For
Parking Places) (Amendment No.
156) Order 2023**

**The Waltham Forest (Free Parking
Places, Loading Places and Waiting,
Loading and Stopping Restrictions)
(Amendment 156) Order 2023**

**The Waltham Forest (Prescribed
Routes) (Old Church Road)
(Amendment No. 1) Traffic Order
2023**

**The Waltham Forest (Prescribed
Routes) (Path (Turner Road to
Marlowe Road E17)) Traffic Order
2023**

1. NOTICE IS HEREBY GIVEN that the Council of the London Borough of Waltham Forest ('the Council') on **27th January 2023** made the above-mentioned Orders under sections 6, 45, 46, 49 and 124 of and Part IV of Schedule 9 to the Road Traffic Regulation Act 1984 (RTRA), as amended.

2. The general effect of the Orders will be to introduce new or extend existing lengths of 'at any time' waiting restrictions (double yellow lines) at the locations specified in the **Schedule** to this Notice, converting existing lengths of 'single yellow line' waiting restrictions where needed; and

3. The general effect of the Orders in other roads will be, in:

- (a) **Albert Road E17 – north side** - convert a single yellow line waiting restriction outside Nos. 84 and 86 to permit parking space for resident's only operating Mon-Sat 8am 6.30pm;
- (b) **Brooke Road E17 (BK) – east side** - convert permit parking space outside the whole boundary of No. 96 BK to double yellow line "at any time" waiting restrictions and convert permit parking space for 6.6 metres outside Nos. 92 and 94 BK to a disabled person's parking place operating "at any time";
- (c) **Cann Hall Road E11 – south side** - provide a maximum stay of 3 hours for disabled badge holders only in the disabled person's parking place outside No. 139 Cann Hall Road
- (d) **Cobden Road E11 – south-east side** - to convert 4.5 metres permit holders' parking space to double yellow line "at any time" waiting restrictions opposite the rear of No. 470 High Road, Leytonstone;
- (e) **Devonshire Road E17 (DEV) – south-west side** - to remove the whole 'single yellow line' opposite No. 76 to 80 DEV and provide additional permit parking space by adjoining the permit holders' parking places either side of the waiting restriction. The new permit parking space will operate Mon Fri 8am to 12.30pm and 2.30pm to 6.30pm and Sat 8am to 6.30pm;

(f) **Falmer Road E17 (FL) – east side** - extend single yellow line waiting restrictions outside No. 26 FL by 1 metre to the north and 1 metre to the south outside No. 24 FL to operate Mon-Sat 8am-6.30 pm and reduce resident permit parking space in these locations by the same distance (either side to allow for safe off-street access and egress);

(g) **Forest Road E17 –**
a. **north side** - convert loading restrictions between No. 617b/619 and a point 17.5 metres westward to operate 8am-9.30am and 4.30pm-6.30pm everyday;

b. **south side** - convert part time no loading restrictions to operate "at any time" between its junction with Howard Road and a point opposite No. 569 Forest Road

(h) **Granleigh Road E11 (GR) – south-east side** - to convert 6.2 metres permit holders' parking space to double yellow line "at any time" waiting restrictions opposite No. 38 and 38A GR;

(i) **Grosvenor Rise East E17 (GRE) – south-east side** - to convert 4 metres permit holders' parking space to double yellow line "at any time" waiting restrictions opposite Nos. 38 GRE;

(j) **Hainault Road E11 (HN) – south-east side** - to extend double yellow line "at any time" waiting restrictions outside No. 162 HN north-eastwards for 1 metre and reduce permit parking space outside No. 164 HN by the same distance;

(k) **Hall Lane E4 – south side** - relocate a Pay by Phone parking place outside Nos. 5 to 7 westwards by 3 metres and provide double yellow line "at any time" waiting restrictions in the 3 metres of displaced area previously occupied by that Pay by Phone parking space and removing any single yellow lines.

(l) **Markhouse Passage E17 – the whole road** - provide a no waiting or loading "at any time" restricted zone (entry and exit sign plates only without road markings)

(m) **Matlock Road E10 (MT) – north-west side** - convert a total of 6 metres of permit parking space situated outside Nos. 77 and 79 MT to a single yellow line waiting restriction operating Mon-Fri 9am to 6pm inclusive;

(n) **Nottingham Road E10 (NT) – north-west side** - convert a total 6.8 metres of permit parking space situated outside No. 13 and 15 NT to a single yellow line waiting restriction operating Mon-Fri 8am to 6.30pm inclusive;

(o) exempt pedal cycles from the part-time right-turn ban from **Old Church Road E4** into Priory Avenue E4, Leadale Avenue E4, Lambourne Gardens E4 and Albert Crescent E4

(p) **Queens Road E11 (QN) – north-east side** - extend single yellow line waiting restrictions outside No. 44 QN by 1 metre to the north-west and 1 metre to the south-east outside No. 44/46 QN and reduce permit parking space in these locations by the same distance (either side to allow for safe

off-street access and egress) operating to operational times of the cpz for that road;

(q) **Path (Turner Road to Marlowe Road)** - a prohibition of all vehicles except for pedal cycles being pushed by hand within the said path;

(r) **Ranelagh Road E11 – all sides** - provide "at any time" loading restrictions between its junction with High Road E11 and the section closed to vehicular traffic approximately 3.5 metres east;

(s) **Rookwood Gardens (RG) E4** - relocate a disabled person's parking place from outside No. 7/8 to outside Nos. 5/6 RG;

(t) **Rosedene Terrace E10 (RN) – south-west side** - to remove 7 metres of permit parking space outside 1-10 Chapel Court and extend the existing single yellow line between Rosedene Terrace's junction with Church Road and 1-10 Chapel Court south-east by 7 metres operating Mon-Sat 8am to 6.30pm (inclusive).

(u) **Shrubland Road E10 (SB) – north-east side** - convert the single yellow line waiting restriction outside No. 2A to operate between Mon-Fri - 6.30 a.m. to 6.30 p.m.;

(v) **St Mary Road E17 (SM) – south side** - convert 5 metres of short stay parking to double yellow line "at any time" waiting restrictions opposite Nos. 14 and 16 SM;

(w) convert part time 'no loading' restrictions to 'no loading' "at any time" restrictions in:

a. **Markhouse Road E17 – both sides** - remainder of the street between Markhouse Avenue and South Grove;

b. **St James Street E17 – north and south sides** - between its junction with South Grove and the eastern boundary of Nos. 70/72 St James Street.

c. **Hoe Street E17 – north-west side** - outside Nos. 18 and 24 Hoe Street

d. **South Grove E17 – both sides** - the remainder of the street

(x) **The Broadway E4 – north-west side** - convert a loading place between Nos. 4 to 7 to double yellow line "at any time" waiting restrictions; and

(y) **Vincent Road E4 – south side**, provide a loading place for 30 metres opposite Joseph Clark school operating Mondays to Fridays between 8.30 a.m. and 9.30 a.m. and 2.30 p.m. and 4.30 p.m.

Note:

The proposals to convert the free short stay parking place opposite the flank wall of No. 115 Dames Road to a CHE permit holder parking place operating between 8am and 6.30pm Mon-Sat in Vansittart Road E7 has been deferred and at a future time will be either made as proposed, amended or abandoned. The proposals in **Endlebury Road E4** and **Union Close E11** have been amended (see revisions in the Schedule to this notice)

4. **FURTHER NOTICE IS HEREBY GIVEN** that the Council under the same RTRA sections mentioned in item 1 preceding, on 27th January 2023, made minor amendments/corrections

to traffic order schedule relating to parking and no waiting arrangements already existing on the highway:

(a) **Carlton Road E11 – north-west side** - outside of No. 10 - a removal of double yellow line "at any time" waiting restrictions and provision of permit parking space operating Mon-Fri 8am - 6.30pm; and

(b) **Normanton Park E4 – north side** - double yellow line "at any time" waiting restrictions, between its junction with Friday Hill eastwards for a distance of 19 metres.

(c) **Myrtle Road E17 – (1) south side** - at its junction with Springfield Road and (2) north side outside No. 2 missing double yellow line "at any time" waiting restrictions;

(d) **Vicarage Road E10 – west side** - outside No. 136 a reduction of waiting and loading restrictions and an extension of permit parking;

(e) **Rale Lane E4 – the whole road** - a restricted no waiting or loading "at any time" zone (entry and exit sign plates only without road markings)

(f) **Vincent Road E4 – north side**, the loading place outside Joseph Clark school to operate Mondays to Fridays between 8.30 a.m. and 9.30 a.m. and 2.30 p.m. and 4.30 p.m.

no changes will be made on street with regards to all the Order amendments mentioned in item 4.

5. Copies of the Orders, which will come into operation from **6th February 2023** and all other relevant documents can be inspected until the expiration of a period of 6 weeks from that date on request by either emailing **traffic.scheme@walthamforest.gov.uk** or visiting ("by appointment) the Highways and Traffic Management office, Low Hall, Argall Avenue E10 7AS during normal office hours on Mondays to Fridays inclusive; or alternatively

documents can be viewed online at: **www.walthamforest.gov.uk/content/road-traffic-schemes-and-consultations**.

6. Any person desiring to question the validity of either of the Orders or of any provision contained therein on the grounds that it is not within the relevant powers of the Road Traffic Regulation Act 1984, or that any of the relevant requirements thereof or of any relevant regulations made thereunder has not been complied with in relation to the Orders may, within six weeks of the making of the Orders, make application for the purpose to the High Court

*For more information please telephone 020 8496 3000, quoting reference Traffic Orders **T40(22) – LBWF BATCH 20**.

Dated **27th January 2023**

Mr. J. Griffin, Director of Neighbourhoods, Traffic Orders, Low Hall, Argall Avenue, London E10 7AS.

SCHEDULE - 'at any time' waiting restrictions (and loading restrictions where stated)

(a) **Beechwood Drive IG8 – west side** - between a point in line with the northern boundary of No. 91

northwards for approx. 24 metres;

(b) **Boardman Avenue E4 (BD) – both sides** - between Nos. 18 and 90 BD, fully across 19 staired access points (that allow pedestrian access between footway and carriageway) and for an additional 0.5 metres either side of those said staired access points (total of 6 staired access points on the west side and 13 on the east side)

(c) **Cairo Road E17 – south side** - opposite and between Nos. 7 and 17 Cairo Road

(d) **Connington Crescent E4 – east side** - between a point in line with the northern kerb line of Accommodation Road southwards for approx. 24 metres (outside Nos. 2 and 5 Ashton Court);

(e) **Eastfield Road E17 – both sides** - outside Nos. 1 and 28 Eastfield Road;

(f) **Endlebury Road E4 (EN) – between Nos. 15 and 41**

a. **the island site** - all, except its north-east facing edge

b. **south-west side** - between the common boundary of Nos. 39 and 41 and a point 1.5 metres east of the common boundary of Nos. 15 and 17;

(g) **Hall Lane E4 - south side**
a. between Nos. 1 and 11 (excluding a relocated Pay by Phone parking place between Nos. 5 and 9); and

b. for 10 metres either side of its junction with Waverley Avenue;

(h) **Harford Close E4** - the whole close except on the western side between the southern boundary of No. 1 Harford Close and a point 10 metres north of its junction with Harford Road

(i) **Harford Road E4 (HF) – north side** - for 10 metres on either side of its junction with Harford Close outside Nos. 11 and 13 HF

(j) **Hollywood Way W.G – north-east side** - between its junction with Oak Hill northwards for a distance of 10 metres.

(k) **Horsley Road E4 – east side** - between a point 10 metres north and a point 10 metres south of its junction with Mayfield Road;

(l) **Hurst Avenue E4 – west side** - for 7.2 metres opposite Nos. 6 and 8 to allow for safe garage access and egress

(m) **Low Hall Close E4 (LHC) – all sides** - (1) the **south side** between its westernmost extremity and a point 4.5 metres east of the common boundary of Nos. 6 and 7 LHC (including the north to south section 3-point-turn hammer head), (2) the **westernmost extremity** and (3) the **north side** between its westernmost extremity and the common boundary of Nos. 7 and 8 LHC

(n) **Mayfield Road E4 – both sides** - between its junction with Horsley Road eastwards for a distance of 10 metres;

(o) **Mead Crescent E4 (MD) – the north-east, north and the north-west sides** - between a point 3.5 metres north-east of the common boundary of Nos. 7 and 8 MD and a point 6.2 metres south-east of the common boundary of Nos. 6 and 7 MD

(p) **Mornington Road E4** - the east side - extend existing situated across

the entrance to Rale Lane northwards by 1 metre and southwards by 1 metre (q) **Oakhill W G (OH)** –

a. the **north-east to south-west arm** – both sides – between its junction with its respective north-west to south-east arm (roundabout) and a point in line with the north-east kerb line of Hollywood Way;

b. the **north-west to south-east arm – south-west side** – between its junction with its respective north-east to south-west arm (roundabout) and a point 2 metres south-east of the common boundary of Nos. 53 and 55 Oakhill; and

(r) **Oak Hill Gardens W.G – the north-west side** – extend at its junction with Oak Hill by 6 metres in a south-westerly direction

(s) **Onslow Close E4 – both sides** – between its junction with Endlebury Road south-west for a distance of 10 metres

(t) **Priory Avenue E4 – south side** – between its junction with Old Church Road and Hurst Avenue – the remainder of that side

(u) **Rookwood Gardens (RG) E4** – outside and opposite No. 7 and 8 extensions of existing double yellow lines

a. **north, north-west and west sides** – extend existing by 10.3 metres in a general northerly direction around the bend

b. **south side** – extend existing in an easterly direction to the common boundary of Nos. 5 and 6 RG

(v) **Sycamore Path E17 (SY)** –

a. from its southwestern extremity (next to No. 2 Poplars Road) to a point in line with the north-east facing wall of No. 26 Poplars Road and in line with the north-west facing wall of No. 28 Poplars Road – provide a no waiting or loading “at any time” restricted zone (entry and exit sign plates only without road markings); and

b. that section of Sycamore Path (all sides) from a point in line with the north-east facing wall of No. 26 Poplars Road and in line with the north-west facing wall of No. 28 Poplars Road to its junction with Poplars Road next No. 26 Poplars Road – provide physical double yellow line “at any time” waiting and loading restrictions

(w) **Union Close E11** –

a. **west side (north to south arm)**, between its junction with Langthorne Road northward for a distance of 10 metres

b. **west side (north to south arm)**, between a point 7.5 metres north of the north facing wall of 21 Thorne Close and its northernmost extremity that is public highway

c. **east side (north to south arm)** – the whole side which is public highway

d. **both sides (east to west arm)** the remainder of the whole road which is public highway

(x) **Waverley Avenue E4** –

a. **both sides** – for a distance of 10 metres south from its junction with Hall Lane

b. **east side** – between a point 1

metre south of the northern boundary of No. 1 and a point 8 metres northwards of that said point

c. **west side** – between a point 1 metre south of the northern boundary of No. 2 and a point 7.3 metres northwards of that said point

(y) **Westdown Road E15 – east side** – convert the whole single yellow line opposite Nos. 97 and 107 Westdown Road

(z) **Wood Street E17 – west side** – between Barrett Road and Chestnut Avenue North double yellow line “at any time” waiting and no loading restrictions – the remainder of that section

(aa) **Woodberry Way E4 (WY)** –

a. **southern side** – between a point 13 metres west and southwest of the common boundary of Nos. 6 and 8 WY north-east eastwards to join the double yellow lines situated outside No. 2 WY and Mornington Road

b. **northern side** –

i. between a point 6.5 metres west and southwest of the north-east facing boundary of No. 1 WY north-east and then eastwards for 24 metres;

ii. extend the double yellow lines situated opposite No.2 WY at their western end by 6 metres in a general westerly direction

LONDON BOROUGH OF WALTHAM FOREST

CHANGE FROM ADVISORY TO DESIGNATED DISABLED PERSONS PARKING PLACES AND AMENDMENT OF ADJACENT PARKING PLACES AND WAITING RESTRICTIONS (BATCH 13A)

The Waltham Forest (Charged-For Parking Places) (Amendment No. 150) Order 2023

The Waltham Forest (Free Parking Places, Loading Places and Waiting, Loading and Stopping Restrictions) (Amendment No. 149) Order 2023

1. **NOTICE IS HEREBY GIVEN** that the Council of the London Borough of Waltham Forest on **27th January 2023** made the above-mentioned Orders under sections 6, 45, 46, 49 and 124 of and Part IV of Schedule 9 to the Road Traffic Regulation Act 1984.

2. The general effect of the Orders would be:

(a) to provide a designated disabled persons parking place measuring 6.6 metres in length (unless otherwise specified in Schedule 1 to this Notice in each of the locations specified in Schedule 1 to this Notice, in most cases replacing advisory disabled persons parking places, on the carriageway, footway or both; (b) where any proposed designated disabled persons parking place referred to in sub-paragraph (a) above is longer than the advisory disabled persons parking place it is replacing or where there is no existing advisory disabled persons parking place in the proposed location, to shorten or remove any existing parking place or waiting restriction in that location by the length necessary to provide the

disabled persons parking place; (c) to remove either advisory or formalised disabled person’s parking place in each of the locations specified in Schedule 2 to this Notice and either extend existing permit parking space or adjacent waiting restrictions bordering such disabled parking space by the length necessary in place of the disabled persons parking place;

3. Copies of the Orders, which will come into operation from **30th January 2023** and all other relevant documents can be inspected until the expiration of a period of 6 weeks from that date on request by either emailing traffic.scheme@walthamforest.gov.uk or visiting (*by appointment) the Highways and Traffic Management office, Low Hall, Argall Avenue E10 7AS during normal office hours on Mondays to Fridays inclusive; or alternatively documents can be viewed online at: <https://www.walthamforest.gov.uk/content/road-traffic-schemes-and-consultations>.

4. Any person desiring to question the validity of either of the Orders or of any provision contained therein on the grounds that it is not within the relevant powers of the Road Traffic Regulation Act 1984, or that any of the relevant requirements thereof or of any relevant regulations made thereunder has not been complied with in relation to the Orders may, within six weeks of the making of the Orders, make application for the purpose to the High Court.

*For more information please telephone 020 8496 3000 quoting reference Traffic Orders – **T51a(22) – Change from advisory to designated disabled persons parking places – batch 13A (PCL batch 6A)**

Dated 27th January 2023

Mr. J. Griffin, Director of Neighbourhoods, Traffic Orders, Low Hall, Argall Avenue, London, E10 7AS

SCHEDULE 1 – see paragraph 2(a) above

Locations of designated disabled persons parking places (locations are approximate and designated disabled persons parking places may extend in front of adjacent properties)

Ainslie Wood Road, E4 - outside No. 62 (**1 bay**); **Browns Road E17** - outside No. 44 (**1 bay**); **Chestnut Avenue South, E17** - outside No. 109 (**1 bay**); **Edinburgh Road, E17** - outside No. 88 (**1 bay**); **Grove Park Avenue, E4** - outside No. 4 (**1 bay**); **Havant Road, E17**, outside No. 50 (**1 bay**); **Hurst Road, E17** - outside No. 26 (**1 bay**); **Orford Road, E17** - outside No. 132 (**1 bay**); **Queen’s Road, E17** - outside No. 71 (**1 bay**) (displacing 6.6 metres of single yellow line waiting restriction); **St John’s Road, E17** - outside No. 145 (**1 bay**), **Upper Walthamstow Road, E17** - outside No. 21 (**1 bay**), No. 74 (**1 bay**, 7.1 metres) and Nos. 110 to 116 (**2 bays**); **Wilson Street, E17** - outside No. 4 (**1 bay**); **Woodlands Road, E17** - opposite No. 1 (**1 bay**) and No. 3 (**1 bay**); and **Woodstock Road, E17** - outside No. 6 (**1 bay**) and No. 15 (**1 bay**).

SCHEDULE 2 – see paragraph 2(c) above

designated disabled persons parking places to be removed, outside or in the immediate vicinity of:

Abbotts Park Road E10 – outside No. 36 (**1 bay**); **Colworth Road E11** – outside No. 43 (**1 bay**); **Epping Way E4** – outside No. 43 (**1 bay**); **Evanston Road E4** – outside No. 11 (**1 bay**); **Leybourne Road E10** – outside No. 65 (**1 bay**); **St Johns Road E17** – outside No. 33 (**1 bay**); **Sinclair Road E4** – outside No. 112 (**1 bay**).

LONDON BOROUGH OF WALTHAM FOREST

CHANGE FROM ADVISORY TO DESIGNATED DISABLED PERSONS PARKING PLACES AND AMENDMENT OF ADJACENT PARKING PLACES AND WAITING RESTRICTIONS (BATCH 13B)

The Waltham Forest (Charged-For Parking Places) (Amendment No. 151) Order 2023

The Waltham Forest (Free Parking Places, Loading Places and Waiting, Loading and Stopping Restrictions) (Amendment No. 150) Order 2023

1. **NOTICE IS HEREBY GIVEN** that the Council of the London Borough of Waltham Forest on **27th January 2023** made the above-mentioned Orders under sections 6, 45, 46, 49 and 124 of and Part IV of Schedule 9 to the Road Traffic Regulation Act 1984.

2. The general effect of the Orders will be:

(a) to provide a designated disabled persons parking place measuring 6.6 metres in length (unless otherwise specified in the Schedule to this Notice) in each of the locations specified in the Schedule to this Notice, in most cases replacing advisory disabled persons parking places, on the carriageway, footway or both;

(b) where any proposed designated disabled persons parking place referred to in sub-paragraph (a) above is longer than the advisory disabled persons parking place it is replacing or where there is no existing advisory disabled persons parking place in the proposed location, to shorten or remove any existing parking place or waiting restriction in that location by the length necessary to provide the disabled persons parking place; and (c) the proposals for disabled persons parking places in Darndale Close E17 outside No. 2 and Nelson Road E4 outside No. 133 on 24th November 2022 have been abandoned.

3. Copies of the Orders, which will come into operation from 31st January 2023 and all other relevant documents can be inspected until the expiration of a period of 6 weeks from that date on request by either emailing traffic.scheme@walthamforest.gov.uk or visiting (*by appointment) the Highways and Traffic Management office, Low Hall, Argall Avenue E10 7AS during normal office hours on Mondays to Fridays inclusive; or alternatively documents can be viewed online at: <https://www.walthamforest.gov.uk/content/road-traffic-schemes-and-consultations>.

4. Any person desiring to question the validity of either of the Orders or of any provision contained therein on the grounds that it is not within the relevant powers of the Road Traffic Regulation Act 1984, or that any of the relevant requirements thereof or of any relevant regulations made thereunder has not been complied with in relation to the Orders may, within six weeks of the making of the Orders, make application for the purpose to the High Court.

*For more information please telephone 020 8496 3000 quoting reference Traffic Orders – T51b(22) – Change from advisory to designated disabled persons parking places – batch 13B (PCL batch 6B)

Dated 27th January 2023

Mr. J. Griffin, Director of Neighbourhoods, Traffic Orders, Low Hall, Argall Avenue, London, E10 7AS
SCHEDULE – see paragraph 2(a) above

Locations of designated disabled persons parking places (locations are approximate and designated disabled persons parking places may extend in front of adjacent properties)

Boardman Avenue E4 outside No. 62 (**1 bay**), **Carlton Road E17** outside No. 126 (**1 bay**), **Chesterfield Road E10** outside No. 100 (**1 bay**), **Chivers Road E4** outside No. 4 (**1 bay**), **Colchester Road E10** outside No. 161 (**1 bay**), **Colworth Road E11** outside Nos. 35B and 49 (**2 bays**), **Downsell Road E15** outside No 109 (**1 bay**), **Farmer Road E10** outside the flank wall of No. 113 Vicarage Rd (**1 bay 8.1 metres**), **Grange Park Road E10** outside No. 54 (**1 bay**), **Heather Road E4** outside No. 13 (**1 bay**), **Higham Hill Road E17** outside Lowton Lodge (**1 bay**), **Manor Farm Drive E4** outside No. 85 (**1 bay**), **Newport Road E10** outside No. 211 (**1 bay**), **Priory Court E17** outside No. 2 Xavier House (**1 bay**), **Ravenswood Road E17** outside No. 30 (**1 bay**), **Royston Ave E4** outside No. 25 (**1 bay**), **The Copse E4** outside No. 31 (**1 bay**) and **Wellington Avenue E4** outside No. 5 (**1 bay**).

LONDON BOROUGH OF WALTHAM FOREST

ROAD TRAFFIC REGULATION ACT 1984 BROUGHWISE

MISCELLANEOUS - MINOR BATCH 4-2022

WAITING AND LOADING RESTRICTION AND CONTROLLED ZONE PARKING SPACE AMENDMENTS AND MINOR AMENDMENTS TO EXISTING ORDERS IN RELATION TO PARKING AND NO WAITING AND FORMALISATION BY ORDER OF A NO RIGHT TURN PROHIBITION (T58(22))

The Waltham Forest (Charged-For Parking Places) (Amendment No. 155) Order 2023

The Waltham Forest (Free Parking Places, Loading Places and Waiting, Loading and Stopping Restrictions) (Amendment No. 154) Order 2023

The Waltham Forest (Prescribed Routes) (Bakers Arms) (No. 1) Traffic Order 2023

1. **NOTICE IS HEREBY GIVEN** that the

Council of the London Borough of Waltham Forest (hereinafter termed 'the Council) on **27th January 2023** made the above-mentioned Orders under sections 6, 45 and 124 of and Part IV of Schedule 9 to the Road Traffic Regulation Act 1984 (RTRA), as amended.

2. The general effect of the Orders would be in:

- (a) **Davies Lane E11 – south-west side** - reduce 5 metres of permit parking space opposite Nos. 64 and 66 Davies Lane E11 and provide double yellow line "at any time" waiting and loading restrictions in place of the removed section of parking space;
- (b) **Fillebrook Road (FL) E11 – south side** - convert all LSW permit parking space outside No. 73 FL to a single yellow line waiting restrictions by extending the single yellow line outside No. 71 north-eastwards which will operate Mon-Fri 10am to 4pm (LSW cpz times) (drop kerb access/vehicle crossover)

3. **FURTHER NOTICE IS HEREBY GIVEN** that the Council under the same RTRA sections in item 1 preceding and the orders mentioned above, on 27th January 2023 made minor amendments to existing Orders, and created new Orders, to correct missing waiting restrictions, controlled parking space arrangements; or prescribed route prohibitions for signs already existing on the highway in:

- (a) **Hookers Road E17 - south side** - removal of Pay by Phone parking place outside Nos. 11 and 12 and replace with a parking place for BL permit holders only operating Mon-Sat 8am-6.30pm. (amendment to the traffic order mapping schedule);
- (b) Prohibition of no right turn for vehicular traffic from:
- (i) **High Road E10 to Lea Bridge Road;** and
- (ii) **Lea Bridge Road to Hoe Street E17** (new order)
- (c) **Billet Road E17** (the north-west to south-east arm that runs parallel to the north-west bound A406 slip road) remove double yellow line "at any time" waiting restrictions on the north-east side and east side from a point 5 metres north-west of the north-west facing wall of No. 1 Waltham Park to its southern extremity (amendment to traffic order mapping schedule);
- (d) **Greenway Avenue E17, south side**, outside Nos. 150 and 152 a formalisation of a disabled persons only parking place 5.7 metres in length and immediately to the west a parking place situated outside No. 150 operating Mon-Fri 10am to 4pm for WSE permit holders only (1 bay).

No changes will be made on the highway apart from any carriageway marking refreshing.

4. Copies of the Orders, which will come into operation from **30th January 2023** and all other relevant documents can be inspected until the expiration of a period of 6 weeks from that date on request by either emailing traffic.scheme@walthamforest.gov.uk or visiting (*by appointment) the Highways

and Traffic Management office, Low Hall, Argall Avenue E10 7AS during normal office hours on Mondays to Fridays inclusive; or alternatively documents can be viewed online at: www.walthamforest.gov.uk/content/road-traffic-schemes-and-consultations.

5. Any person desiring to question the validity of either of the Orders or of any provision contained therein on the grounds that it is not within the relevant powers of the Road Traffic Regulation Act 1984, or that any of the relevant requirements thereof or of any relevant regulations made thereunder has not been complied with in relation to the Orders may, within six weeks of the making of the Orders, make application for the purpose to the High Court

*For more information, please telephone 020 8496 3000 quoting reference Traffic Orders – **T58(22) – Minor batch 4–2022 Boroughwide miscellaneous highway provisions and amendments**, and the site location **Dated 27th January 2023**

Mr. J. Griffin, Director of Neighbourhoods, Traffic Orders, Low Hall, Argall Avenue, London, E10 7AS

LONDON BOROUGH OF WALTHAM FOREST

ROAD TRAFFIC REGULATION ACT 1984 – SECTIONS 6, 35 AND 45

PROVISION OF HOUSING ESTATE CAR PARK – TITLEY CLOSE E4 (T62(22)) The Waltham Forest (Housing Estates) (On-Street Parking Places and Waiting and Loading Restrictions) (Amendment No. 4) Order 2023

The Waltham Forest (Housing Estates Car Parks) (No. 1) (Amendment No. 12) Order 2023

The Waltham Forest (Free Parking Places, Loading Places and Waiting, Loading and Stopping Restrictions) (Amendment No. 155) Order 2023

1. **NOTICE IS HEREBY GIVEN** that the Council of the London Borough of Waltham Forest on **27th January 2023** made the above-mentioned Orders under sections 6, 35, 45, 46 and 49 and 124 of and Part IV of Schedule 9 to the Road Traffic Regulation Act 1984, as amended.

2. The general effect of the Orders will be, in Titley Close E4 (housing estate roads and public highway), to provide and regulate:

- (a) 11 on-street permit holder parking places (available to resident permit holders, carers permit holders, visitor permit holders, business permit holders, tradespersons permit holders, essential user permit holders and essential user pool permit holders) operating between 8.00 a.m. and 8.00 p.m. on Mondays to Sundays and 7 blue badge disabled persons' parking bays operating "at any time" (available to blue badge holders and carers permit holders);
- (b) "at any time" waiting restrictions, other than where the parking places referred to in sub-paragraph 2(a) above would be provided; and
- (c) revoke disabled parking place from the Council's public highway order and provide new disabled parking places governed by housing estate order.

3. The general effect of the Orders would be, in Titley Close E4 on land (off-street areas), to provide and regulate:

- (a) off-street permit holder parking areas operating "at any time", comprising of a total of 17 permit holder parking bays (available to resident permit holders, carers permit holders, visitor permit holders, business permit holders, tradespersons permit holders, essential user permit holders and essential user pool permit holders) operating between 8.00 a.m. and 8.00 p.m. on Mondays to Sundays and 6 blue badge disabled persons' parking bays operating "at any time" (available to blue badge holders and carers permit holders);

- (b) "at any time" waiting restrictions in the off-street areas other than where the parking places referred to in sub-paragraph 3(a) above would be provided; and
- (c) revoke disabled parking place from the Council's public highway order and provide new disabled parking places governed by housing estate order.

4. Permits for the use of the parking bays referred to in paragraphs 2 and 3 of this Notice would be available to property Nos. 1 to 44 Titley Close E4 8PL (inclusive) to be eligible for 'H-TC' resident permits, carers permits, visitors permits, business permits, tradespersons permits, essential user permits and essential user pool permits (excluding any car free property*) and 'H-TC' visitor permits.

*Note: Where an agreement has been made with the tenant or owner of a property mentioned in this notice under section 106 of the Town and Country Planning Act 1990, or section 16 of the Greater London Council (General Powers) Act 1974, or both; or in any other Council planning agreement, restricting the parking of any motor vehicle in the Titley Close housing estate; no permits will be granted, or as the case may be, only a limited number of permits would be granted to the tenant or owner of that property subject to the planning agreement.

5. Regarding the parking places referred to in paragraphs 2 and 3 of this notice, any vehicle with a valid permit displaying the letters 'H-TC' may use the 'permit holders only parking bays' and any vehicle displaying a valid disabled persons' blue badge may park within the disabled badge holder bays.

6. The above measures are necessary to ensure that parking and waiting facilities are maintained for the use of eligible residents of the estate, their visitors, disabled persons and other permit holders agreed by the Council. These measures will also prevent parking and waiting where it could cause an obstruction, particularly to emergency services and refuse collection vehicles.

7. 'H-TC' residents and business permits will be charged on a basis of CO2 emissions (or, for older vehicles, engine size) and number of vehicles registered to a household. Residents' visitor permits are obtainable as

paperless permits or as scratch-cards at a rate of 70p/hour. For more information on the other types of permits available, the eligibility criteria and to determine the permit charge for a vehicle please visit www.walthamforest.gov.uk/service-categories/parking-permits.

8. Copies of the Orders, which will come into operation from **30th January 2023** and all other relevant documents can be inspected until the expiration of a period of 6 weeks from that date on request by either emailing traffic.scheme@walthamforest.gov.uk or visiting (*by appointment) the Highways and Traffic Management office, Low Hall, Argall Avenue E10 7AS during normal office hours on Mondays to Fridays inclusive; or alternatively documents can be viewed online at: www.walthamforest.gov.uk/content/road-traffic-schemes-and-consultations.

9. Any person desiring to question the validity of either of the Orders or of any provision contained therein on the grounds that it is not within the relevant powers of the Road Traffic Regulation Act 1984, or that any of the relevant requirements thereof or of any relevant regulations made thereunder has not been complied with in relation to the Orders may, within six weeks of the making of the Orders, make application for the purpose to the High Court

*For more information please telephone 020 8496 3000, quoting reference Traffic Orders and ref **T62(22) – Titley Close E4 housing estate Dated 27th January 2023**

Mr. J. Griffin, Director of Neighbourhoods, Traffic Orders, Low Hall, Argall Avenue, London, E10 7AS

LONDON BOROUGH OF WALTHAM FOREST

ROAD TRAFFIC REGULATION ACT 1984 – SECTION 14(1)

THE WALTHAM FOREST (JESSE ROAD E10) (TEMPORARY RESTRICTIONS) (NO. 1) ORDER 2023 (TT1(23))

1. The Council of the London Borough of Waltham Forest **HEREBY GIVES NOTICE** that on 27th January 2023 it made an Order to allow for the repair, maintenance and upgrade works to a telecommunications mast by T-Mobile in a safe and efficient manner in **Jesse Road E10**.

2. The general effect of the Order will be, only at such times and to such extent as regulatory signs are displayed or, where applicable, covered to:

- (a) restrict vehicles (except works vehicles) from entering, proceeding, waiting or loading, for any purpose, "at any time" in **Jesse Road E10**; and
- (b) suspend the one-way working in **Jesse Road E10**, to allow access.
3. Whilst the prohibitions referred to in paragraph 2 above remain in force, advance warning signage and alternative routes for traffic and pedestrians shall be in place.
4. Vehicles waiting or loading in disregard of this Order would be removed.
5. The prohibitions mentioned above

would not apply in relation to any vehicle being used, or as the case may be, any pedestrian involved:

- (a) in connection with the said works; or
- (b) for ambulance, fire brigade or police purposes (if the works allow)
6. The Order will come into operation on **5th February 2023** and will be valid for 3 months, or until the said works are completed, whichever is the sooner.

NOTE: Signage would be placed in advance of any works in the above-mentioned roads which would give more specific details on the exact dates of the restrictions and effects of any temporary traffic management as necessary.

Dated 27th January 2023

Mr J Griffin, Director of Neighbourhoods, Traffic Orders, Low Hall, Argall Avenue, London, E10 7AS

LONDON BOROUGH OF WALTHAM FOREST

ROAD TRAFFIC REGULATION ACT 1984 - SECTION 14(1)

THE WALTHAM FOREST (AINSLIE WOOD ROAD E4) (TEMPORARY RESTRICTIONS) (NO. 1) ORDER 2023 (TT3(23))

1. The Council of the London Borough of Waltham Forest (the Council) **HEREBY GIVES NOTICE** that on **27th January 2023** it made an Order to allow for utility connections to a development by UK Power Networks (UKPN) in Ainslie Wood Road E4, in a safe and efficient manner.

2. The general effect of the Order will be, only at such times and to such extent as regulatory signs are displayed, to prohibit vehicles (except works vehicles) from entering, proceeding, waiting or loading for any purpose, "at any time", in:

- (a) **Ainslie Wood Road E4**, between its junctions with Lynton Road and Rolls Park Road, and
- (b) **Ainslie Wood Gardens E4**, between its junction with Ainslie Wood Road and a point 50 metres north of that said junction.

3. Whilst the prohibitions referred to in paragraph 2 above remain in force, advance warning signage and alternative routes for traffic shall be in place.

4. Vehicles waiting or loading in disregard of this Order would be removed.

5. The prohibitions mentioned above would not apply in relation to any vehicle being used:

- (a) in connection with the said works; or
- (b) for ambulance, fire brigade or police purposes (if the works allow).

6. The Order would come into operation on **27th January 2023** and would be valid for a maximum period of 6 months or until the works are completed, whichever is the sooner.

NOTE: Signage will be placed in advance of any works in the roads mentioned in this notice which would give more specific details on the exact dates of the prohibitions, effects of any temporary traffic management and diversion routes as necessary.

Mr J Griffin, Director of Neighbourhoods, Traffic Orders, Low Hall, Argall Avenue, London, E10 7AS

LONDON BOROUGH OF WALTHAM FOREST

ROAD TRAFFIC REGULATION ACT 1984 - SECTION 14(1)

THE WALTHAM FOREST (THAMES WATER MAINTENANCE AND REPAIR) (RAVENSWOOD ROAD E17) (TEMPORARY PROHIBITION OF TRAFFIC) (NO. 1) ORDER 2023 (TT5(23))

1. The Council of the London Borough of Waltham Forest (the Council) **HEREBY GIVES NOTICE** that on **27th January 2023** it made an Order to allow for sewer maintenance and repair works by Thames Water in a safe and efficient manner in **Ravenswood Road E17**.

2. The general effect of the Order will be, only at such times and to such extent as regulatory signs are displayed, to prohibit vehicles (except works vehicles) from entering, proceeding, waiting or loading for any purpose, at any time, in the entire length of Ravenswood Road E17.

3. Whilst the prohibitions referred to in paragraph 2 above remain in force, advance warning signage and alternative routes for traffic shall be in place.

4. Designated controlled parking space situated in any road or part of road affected by the measures set out in paragraph 2 above will be suspended.

5. Vehicles waiting or loading in disregard of this Order would be removed.

6. The prohibitions mentioned above would not apply in relation to any vehicle being used:

(a) in connection with the said works; or

(b) for ambulance, fire brigade or police purposes (if the works allow).

7. The Order will come into operation on **1st February 2023** and would be valid for a maximum period of 6 months or until the works are completed, whichever is the sooner.

NOTE: Signage will be placed in advance of any works in the roads mentioned in this notice which would give more specific details on the exact dates of the prohibitions, effects of any temporary traffic management and diversion routes as necessary.

Dated 27th January 2023

Mr J Griffin, Director of Neighbourhoods, Traffic Orders, Low Hall, Argall Avenue, London, E10 7AS

LONDON BOROUGH OF WALTHAM FOREST

ROAD TRAFFIC REGULATION ACT 1984 - SECTION 14(1)

THE WALTHAM FOREST (CAPWORTH STREET E10) (TEMPORARY RESTRICTIONS) (NO. 1) ORDER 2023 (TT6(23))

1. The Council of the London Borough of Waltham Forest **HEREBY GIVES NOTICE** that it on **27th January 2023** it made an Order to enable Network Rail to carry out a structural bridge inspection in a safe and efficient manner, in **Capworth Street E10**.

2. The general effect of the Order would be, only at such times and to such extent as regulatory signs are displayed, to prohibit vehicles (except works vehicles) from entering, proceeding, waiting or loading for any purpose, "at any time", in Capworth Street E10, between its junctions with Bickley Road and Dunton Road.

3. Whilst the prohibitions referred to in paragraph 2 above remain in force, advance warning signage and alternative routes for traffic shall be in place.

4. Vehicles waiting or loading in disregard of this Order would be removed.

5. The prohibitions mentioned above would not apply in relation to any vehicle being used:

(a) in connection with the said works; or

(b) for ambulance, fire brigade or police purposes (if the works allow).

6. The Order will come into operation on **7th February 2023** and would be valid for a maximum period of 3 months or until the works are completed, whichever is the sooner.

NOTE: Signage would be placed in advance of any works in the above-mentioned section of road which would give more specific details on the exact dates of the restrictions and effects of any temporary traffic management as necessary.

Dated 27th January 2023

Mr J Griffin, Director of Neighbourhoods, Traffic Orders, Low Hall, Argall Avenue, London, E10 7AS

LONDON BOROUGH OF WALTHAM FOREST

ROAD TRAFFIC REGULATION ACT 1984 - SECTION 14(1)

THE WALTHAM FOREST (THAMES WATER MAINTENANCE AND REPAIR) (PERTH ROAD E10) (TEMPORARY PROHIBITIONS OF TRAFFIC) (NO. 1) ORDER 2023 (TT7(23))

1. The Council of the London Borough of Waltham Forest **HEREBY GIVES NOTICE** that on **27th January 2023** it made an Order to allow for sewer maintenance and repair works by Thames Water in a safe and efficient manner in Perth Road E10.

2. The general effect of the Order will be, only at such times and to such extent as regulatory signs are displayed, to prohibit vehicles (except works vehicles) from entering, proceeding, waiting or loading for any purpose, "at any time", in **Perth Road E10**.

3. Whilst the works are being carried out in Perth Road, any one-way working or no-entry prohibition for the following roads, would be temporarily suspended:

(a) **Perth Road E10**; and

(b) **Clementina Road E10**, between its junctions with Perth Road and Kettlebaston Road.

4. Whilst the prohibitions referred to in paragraph 2 above remain in force, advance warning signage and alternative routes for traffic shall be in place.

5. Vehicles waiting or loading in disregard of this Order would be removed.

6. The prohibitions mentioned above would not apply in relation to any

vehicle being used:

(a) in connection with the said works; or

(b) for ambulance, fire brigade or police purposes (if the works allow).

7. The Order will come into operation on **2nd February 2023** and would be valid for a maximum period of 6 months or until the works are completed, whichever is the sooner.

NOTE: Signage would be placed in advance of any works in the above-mentioned roads which would give more specific details on the exact dates of the restrictions and effects of any temporary traffic management as necessary.

Dated 27th January 2023

Mr J Griffin, Director of Neighbourhoods, Traffic Orders, Low Hall, Argall Avenue, London, E10 7AS

LONDON BOROUGH OF WALTHAM FOREST

ROAD TRAFFIC REGULATION ACT 1984 - SECTION 14(1)

THE WALTHAM FOREST (THE FOUR WENTS E4) (TEMPORARY MEASURES) (NO. 1) ORDER 2023 (TT8(23))

1. The Council of the London Borough of Waltham Forest (the Council) **HEREBY GIVES NOTICE** that it intends on making an Order to allow for the maintenance and replacement of a district water meter, to be completed by Thames Water, in a safe and efficient manner.

2. The general effect of the Order would be, only at such times and to such extent as regulatory signs are displayed, to prohibit vehicles (except works vehicles) from:

(a) entering, proceeding, waiting or loading for any purpose, at any time, in: **The Four Wents E4** - between its north-westernmost junction with Kings Road north-eastwards for a distance of 20 metres;

(b) waiting or loading for any purpose, at any time, in: **Kings Road E4** – both sides,

i. between the north-west kerb line of north-westernmost junction of The Four Wents, north-westwards for a distance of 60 metres and

ii. between the south-east kerb line of north-westernmost junction of The Four Wents, south-eastwards for a distance of 60 metres

(c) waiting or loading for any purpose, at any time, in: **The unnamed access road E4 - leading to Pimp Hall Nature Reserve E4** – both sides, between its junction with Kings Road south-westwards for a distance of 20 metres.

3. Whilst the prohibitions referred to in paragraph 2 above remain in force, advance warning signage and alternative routes for traffic shall be in place.

4. Vehicles waiting or loading in disregard of this Order would be removed.

5. The prohibitions mentioned above would not apply in relation to any vehicle being used -

(a) in connection with the said works; or

(b) for ambulance, fire brigade or police purposes (if the works allow).

6. The Order would come into operation on **11th February 2023** and would be valid for a maximum period of 6 months or until the works are completed, whichever is the sooner.

NOTE: Signage will be placed in advance of any works in the aforementioned roads which would give more specific details on the exact dates of the restrictions and effects of any temporary traffic management as necessary.

Dated 27th January 2023

Mr J Griffin, Director of Neighbourhoods, Traffic Orders, Low Hall, Argall Avenue, London, E10 7AS

LONDON BOROUGH OF WALTHAM FOREST

ROAD TRAFFIC REGULATION ACT 1984 - SECTION 14(1)

THE WALTHAM FOREST (EASTERN

ROAD E17) (TEMPORARY MEASURES) (NO. 1) ORDER 2023 (TT13(23))

1. The Council of the London Borough of Waltham Forest (the Council) **HEREBY GIVES NOTICE** that it intends on making an Order to allow for the repair of a damaged maintenance chamber (sewage apparatus) in Eastern Road E17, by Thames Water, in a safe and efficient manner.

2. The general effect of the Order would be, only at such times and to such extent as regulatory signs are displayed, to prohibit vehicles (except works vehicles) from entering, proceeding, waiting or loading for any purpose, at any time, in **Eastern Road E17** – the whole road.

3. Whilst the prohibitions referred to in paragraph 2 above remain in force, advance warning signage and alternative routes for traffic shall be in place.

4. Designated controlled parking space situated in Eastern Road affected by the measures set out in paragraph 2 above will be suspended.

5. Vehicles waiting or loading in disregard of this Order would be removed.

6. The prohibitions mentioned above would not apply in relation to any vehicle being used -

(a) in connection with the said works; or

(b) for ambulance, fire brigade or police purposes (if the works allow).

7. The Order would come into operation on **11th February 2023** and would be valid for a maximum period of 6 months or until the works are completed, whichever is the sooner.

NOTE: Signage will be placed in advance of any works in Eastern Road which would give more specific details on the exact dates of the restrictions and effects of any temporary traffic management as necessary.

Dated 27th January 2023

Mr. J. Griffin, Director of Neighbourhoods, Low Hall, Argall Avenue, London, E10 7AS

Waltham Forest News advertising

Did you know Waltham Forest News has a circulation of 97,376

Advertising has never been so effective

For further information on the different advertising opportunities available

please call: 20 8496 8225 or email:
advertisingwfn@walthamforest.gov.uk



APPLY NOW

Secure your place for 2023



To apply now, visit www.sgmc.ac.uk

Take control of your future...

✉ info@sgmc.ac.uk **f** [/monouxcollege](https://www.facebook.com/monouxcollege) **t** [@monouxcollege](https://twitter.com/monouxcollege) **@** [/monouxcollege](https://www.instagram.com/monouxcollege)

WALTHAM
FOREST
ADULT
LEARNING
SERVICE



Ready to learn something new?

Want to open the door to new job opportunities?
Then don't miss the chance to see what Waltham Forest Adult Learning Service has on offer at its community open day.

Friday 10 February 2023 – 10am to 2pm

We offer a variety of full, part-time and industry short courses for adults considering a career change, wanting to upskill or learn something new. In most cases you can study with us for free!

Waltham Forest Adult Learning Service,
97 Queens Road, Walthamstow, E17 8QR



WALTHAM
FOREST
JOBS

NATIONAL APPRENTICESHIP WEEK™



National Apprenticeship Week brings together the apprenticeship community to celebrate everything that is amazing about apprenticeships. Throughout the week, Waltham Forest Jobs will come together with top employers and organisations to showcase the opportunities available to Waltham Forest Residents.

For more information and to see what events we are supporting visit:
bit.ly/wfapprenticeshipweek



WALTHAM
FOREST
JOBS



Looking for help to find a job?

Come along to one of our free employment drop in sessions held every Wednesday - 10am to 3pm

Waltham Forest Jobs provides help and support with pre-employment guidance and industry training. We work with businesses in Waltham Forest providing a range of local employment opportunities. Jobs and training are available within local schools, hospitality, security, construction and more!

The Junction Adult Learning Center,
2 - 4 Cathall Road, Leytonstone, E11 4LF



WALTHAM
FOREST
ADULT
LEARNING
SERVICE

English conversation club volunteers needed!



Are you interested in helping people improve their English speaking skills?

Do you enjoy engaging with your local community?

Are you available for 1 or 2 hours each week?

We are looking for volunteers to deliver conversation clubs for adults with English as a second language.

For more information please email:
conversationclub.als@walthamforest.gov.uk
or call: 07773 390705



For practical maths skills: join Multiply!

Free Skills for Life numeracy programme

Our free Multiply programme has courses, workshops and events to help you feel more confident using maths for work and your daily life.

- ✓ Manage your money and budgets
- ✓ Help children with their maths homework
- ✓ Use practical maths for shopping or your job
- ✓ Play games like chess and have fun learning maths
- ✓ Learn maths for your business
- ✓ Study for a GCSE or other formal qualification.

Who can take part

Waltham Forest residents: if you are 19 or older – and you do not have GCSE maths at grade C (or equivalent) – join our free Multiply programme.

Come to our next Open Day

At Waltham Forest Adult Learning Service, we are ready to help you gain a wide range of skills.

Our next Open Day will be on Friday 10 February 2023 from 10am to 2pm at our Queens Road Learning Centre (97 Queens Road, Walthamstow E17 8QR).

Come along to find out more about Multiply and our many other free courses, workshops and training.

**Ask about Multiply:
phone 020 8496 2974 or
go to bit.ly/WFALS-Multiply**

