

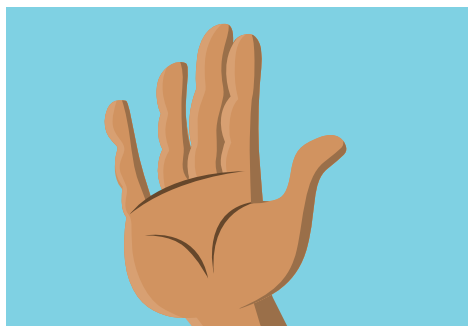
# Level crossing safety worksheet

When you approach a level crossing you must **stop, look and listen**.

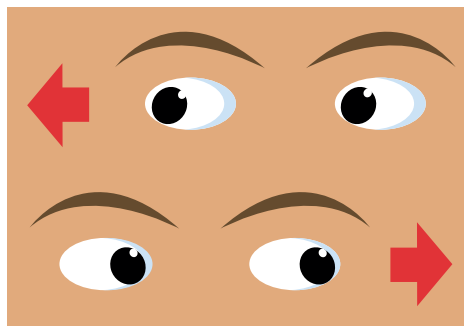
At a level crossing, you can cross the railway tracks safely if you follow a few simple rules.

Every level crossing is different. Take the time to read the signs and follow the instructions.

Only cross when you are sure no trains are coming.



**S  
T  
O  
P**



**L  
O  
O  
K**



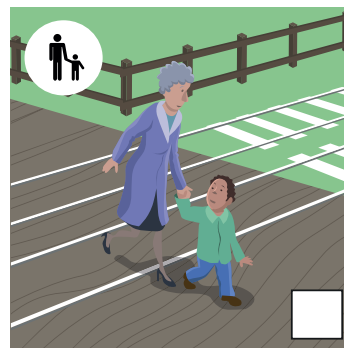
**L  
I  
S  
T  
E  
N**

Every level crossing is different.

## Activity 1:

Look at these pictures to see who is crossing the railway safely, and who isn't.

Put a cross in the box for the people who are doing it wrong. Put a tick in the box for the people who are doing it right.



Remove headphones and put your mobile phone away.



Keep your dogs on a lead.

## Activity 2:

Can you match the pictures to the rules in the red boxes?

Draw a line between the picture and the matching red box.



Parents and children stay close together when you walk across the tracks.



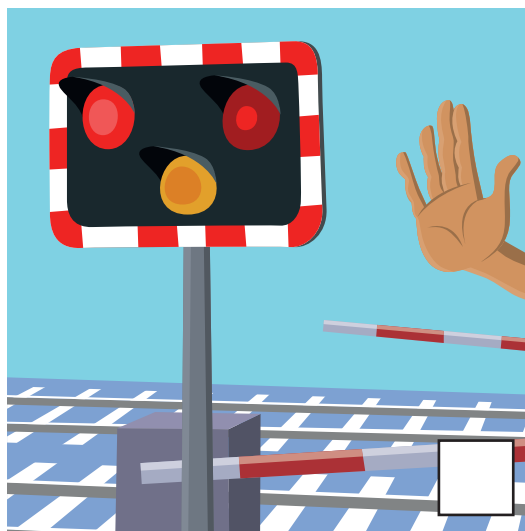
Cyclists dismount.

Some level crossings have lights and alarms.  
Some have barriers to protect you from passing trains.

### Activity 1:

Look at these pictures of people using level crossings with lights and barriers. Who is crossing safely and who isn't?

Put a cross in the box for the people who are doing it wrong.  
Put a tick in the box for the people who are doing it right.

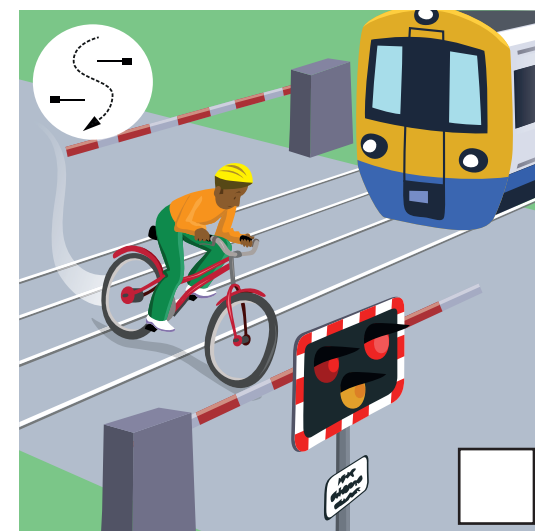
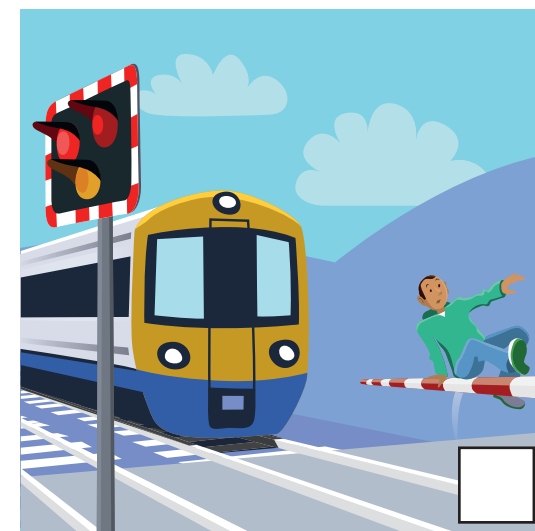


Don't weave between the barriers.

Stop when you see the warning lights. They mean a train is approaching.

Stop when you hear the alarm. It means a train is approaching.

When the barriers come down, you must not cross the railway. Don't jump over the barriers. Please wait until the barriers are fully raised before crossing.



### Activity 2:

Can you match the pictures to the rules in the red boxes?

Draw a line between the picture and the matching red box.

