



VISIT 
NAMUR

OFFICE DU TOURISME

www.visitnamur.eu

GUIDE



© Sébastien Roberty



**NAMUR
CAPITALE**



avec le soutien de
**VISIT
Wallonia
be**

Take to the skies...

Namur Citadel Cable car



Téléphérique
Citadelle de Namur



ticket online



NAMUR
CAPITALE

www.telepheriquedenamur.be



Welcome to Namur!

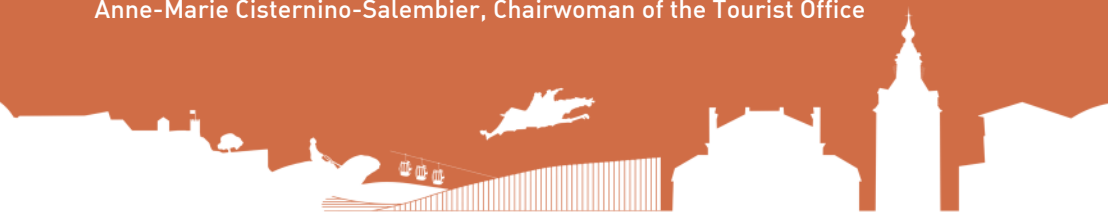
Wallonia's Capital invites you to explore, stroll, relax or set off on adventures! Its generosity, gastronomy and rich heritage are sure to captivate you.

Namur offers the charm and tranquillity of a city nestled at the confluence of the Sambre and the Meuse, protected by its citadel and surrounded by magnificent lush greenery. Proud of its rich past, Namur is also looking forward to the future with a new place called "Le NID".

Hikers, cyclists, amateur sailors, athletes or simply all who love nature and the open air – Namur invites you to roam its countless paths, forests and riverbanks at your leisure... On foot, by bicycle, boat or even perched on a stand-up paddle, discover lots of original views of the city!

Namur is the place to be for all adventures and dreams.

Anne Barzin, Alderwoman of Tourism Development
Anne-Marie Cisternino-Salembier, Chairwoman of the Tourist Office





6

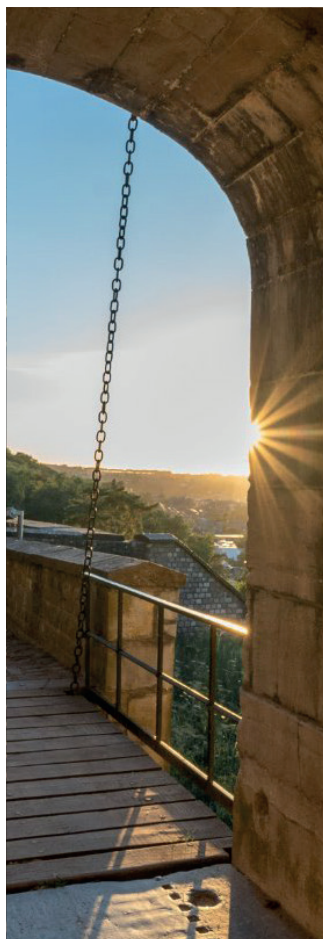
6 Namur's unmissable sights

8 The Citadel of Namur

18 A confluence in the heart of the city

24 Wonderful discoveries in all directions

Guided tours - Our attractions - Our museums



8

40 Stop the clock and enjoy

Not to be missed - Our good addresses

48 Sleep and dream away



18

Find all our news
and events at

www.visitnamur.eu



24



40



48

INFO

OFFICE DU TOURISME

Place de la Station
Tel. : +32 81 24 64 49
www.visitnamur.eu
info@visitnamur.eu

From spring, we welcome you in our new offices located in **Rue du Pont** in the «Halle al'Chair».

From April to September:

Open 7 days a week from 9:30 a.m. to 6 p.m.

From October to March:

Monday to Saturday from 9:30 a.m. to 6 p.m.
and Sundays and public holidays from 11 a.m. to 3 p.m.

Closed on 25 December and 1 January

Responsible publisher: Office du Tourisme de Namur
Anne-Marie Cisternino-Salebrier
Page layout: B. Davister

find us on





Namur's unmissable sights

Some suggestions to start your visit? Look no further! You'll find our favourites here – miss them at your peril! Want to know more? Read on, but you'll always get a warm welcome at the Tourist Office!



© Sébastien Roberty



© Pixel Komando



© B. Wilmette



* **Laying siege to the Citadel** (p.8)

One of Europe's biggest fortifications. 2000 years of history and future to be explored at the Visitor's Centre .

* **The cable car** (p.14)

Travel up and down to/from the Citadel or the city centre in less than 5 minutes.

* **Our confluence** (p.18)

The intersection of the magnificent valleys of the Sambre and the Meuse.

* **The Old Quarters** (P.25)

Seeking a cosy, charming ambience? Stroll in the heart of the old quarters... and down little pedestrian lanes that lead onto beautiful squares.

* **Our museums** (p.36)

- **Félicien Rops**, the museum of the 19th century's scandalous artistic genius.
- The delicious **Strawberry Museum in Wépion**.

* **Our Tuk Tuks** (p.26)

Two original ways to travel around the city.



The Citadel of Namur

2000 years of history in the heart of Europe...
 Presiding majestically at the confluence of the Sambre and
 the Meuse, the Citadel of Namur looks down on the city.
 Together, they have crossed many eras!

© Sébastien Roberty



© V. Pepppe



Standing firm on a particularly impressive rocky spur, this outstanding heritage site has retained traces of every period of its 2000 years of history. The residence of the Counts of Namur in the Middle Ages, transformed into a resort by King

Leopold II, today it is a hotspot for events, guided tours and leafy walks that offer spectacular views of the city.





Tours

* UNDERGROUND TOUR

Guided tour with special effects!

While inspecting the Citadel, Napoleon is said to have called it the "termite mound of Europe" due to its extensive network of underground passages. Explore 500 restored metres of them via an immersive guided tour, which will plunge you into the heart of the Citadel in sound and light.

* THE TERRA NOVA VISITOR CENTRE

No fewer than 2000 years of urban and military history presented through the history of Namur and its citadel, courtesy of dynamic, educational staging: photos, scale models, videos and much more.

* TOURIST TRAIN AROUND THE SITE

This train ride with commentary will let you enjoy the magnificent panoramic views of Namur and the Meuse valley all the more.

Schedules

From Monday 2 January to Sunday 8 January
Open daily from 10:00 to 18:00

From Monday 9 January to Friday 24 February
Closed on Mondays
Open from 10:00 to 17:00

From Saturday 25 February to Sunday 12 March
Open from 10:00 to 18:00

From Monday 13 March to Friday 31 March
Open weekdays from 10:00 to 17:00
Weekends, public holidays + school holidays
from 10:00 to 18:00

From Saturday 1 April to Friday 29 September
Closed on 18 September
Open every day from 10:00 to 18:30

From Saturday 30 September to Friday 20 October
Open weekdays from 10:00 to 17:00
Weekends, public holidays + school holidays
from 10:00 to 18:00

From Saturday 21 October to Sunday 5 November
Open from 10:00 to 18:00

From Monday 6 November to Friday 22 December
Closed on Mondays
Open from 10:00 to 17:00

From Saturday 23 December 2023 to Sunday 7 January 2024
Open daily from 10:00 to 18:00

Closed on 24 December from 12:00 and on
of 25 December 2022

Closed from 31 December 2022 at 12:00
and on 1 January 2023



Price

- Guided tour:
 - Underground: € 12
 - Train: € 6
- Open access to the Visitor's Centre: € 6
- Citadel Pass : € 18 (all activities)
- Concessions for students and groups

Route

(p. 64-65 - C4)

On foot: climb the steps and follow the arrows to Terra Nova.

Access from rue Notre Dame (take note, for good walkers).

By car / coach: via avenue Jean 1er.
Parking on the Esplanade.

By cable-car: see p. 15



TERRA NOVA ADDRESS:
Route Merveilleuse, 64 - 5000 Namur
For all further info on tours and
opening times, see:

<https://citadelle.namur.be>
info@citadelle.namur.be
+32 81 24 73 70





Also explore

- ⇒ **ATELIER DE PARFUMERIE DELFORGE** (p. 68)
 Route Merveilleuse, 60 - 5000 Namur
 Tel. : + 32 81 22 12 19
info@delforge.com - www.delforge.com

Nestled among the Citadel's 16th-century galleries, this parfum workshop – unique to Northern Europe – unveils all its secrets and reveals the stages of making a perfume.

Exhibition and sales: open access all year
 - Perfumery tour: € 3.50 - Saturday (except public holidays) and from Monday to Saturday at 3:30 p.m. during school holidays (except public holidays).

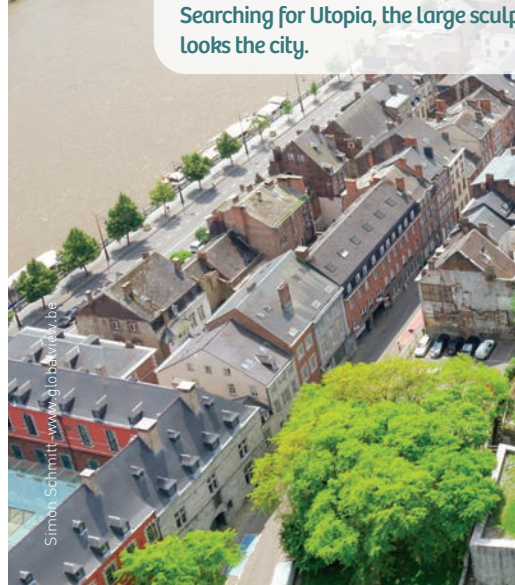
- ⇒ **PARC ATTRACTIF REINE FABIOLA**
 Rond-point Michel Thonar, 1
 5000 Namur
 Tel. : + 32 81 73 84 13
parf@ville.namur.be - www.parf.be

At the top of the Citadel, in a protected green setting, the Reine Fabiola Amusement Park offers several entertainment possibilities for children and families (playground, mini-golf, go-karts with pedals, inflatable castles, trampolines, cafeteria with terrace etc.)

Opening times: from 2 April to 5 November.
 From 11 am to 6 pm
 Prices: € 3 // Children - 1 metre tall: free.



Installed at the place dubbed "Prie
 Searching for Utopia, the large sculp
 looks the city.



Simon Schmitt - www.globeview.be



© B. D'Alimonte - OTN

“The Bonnet” since 2015,
 sculpture by Jan Fabre, over-

‘La Vieille Forge’ plays host to a talented artist, Véronique Henri, who exhibits and sells her ceramics, acrylic on canvas paintings and jewellery. You will also be able to discover original creations here, “Les Namureux de la Citadelle”.

MADE IN NAMUR
TERRA NOVA
 Route Merveilleuse, 64 - 5000 Namur
 Tel. : + 32 81 24 73 70

Come and discover Namur flavours at Made in Namur! Here you will find fresh products, produced locally and available for consumption on site or to take away.







Hop aboard the new cable car and easily reach the Citadel of Namur from the city centre! Take advantage of the ride to take in the scenery during your journey and then set off to explore the siege on this exceptional site.

INDIVIDUAL RATES

Rates valid from 01/01/2023 to 31/12/2023 in tourist schedules every day from 10:00 to 17:00 (18:00 on weekends, public holidays and school holidays between 01/04 and 30/09).

TRIPS	ONE WAY	ROUND TRIP
Adults (16-64 years)	5 €	7,5 €
Seniors (65+)	4 €	6 €
Children (6+), youths and students	4 €	5,5 €
Children 4 and 5 years old	3,5 €	5 €
PMR	3,5 €	5 €
Children (0-3 years old)	Free	
Annual tourist subscription	37 €	

RATES *

PERIODE	01/10 TO 31/03	01/04 TO 30/09
Monday	Closed	10 am - 5 pm
Tuesday	10 am - 5 pm	10 am - 5 pm
Wednesday	10 am - 5 pm	10 am - 5 pm
Thursday	10 am - 5 pm	10 am - 5 pm
Friday	10 am - 5 pm	10 am - 5 pm
Saturday	10 am - 5 pm	10 am - 6 pm
Sunday	10 am - 5 pm	10 am - 6 pm

(*) For more information on schedules and their prolongations:



© Quentin Chevriert



© Quentin Chevriert



le pavillon pop-up

The Pavilion is a centre for experimentation, exhibitions and innovations that breaks down barriers between disciplines and simultaneously seizes upon the arts, science and technology. It cultivates what makes it unique and invites you to an unprecedented experience.

Located on the Esplanade of the Citadel of Namur, this interdisciplinary meeting place offers a programme that is both demanding and accessible to all, which comes in several layers.

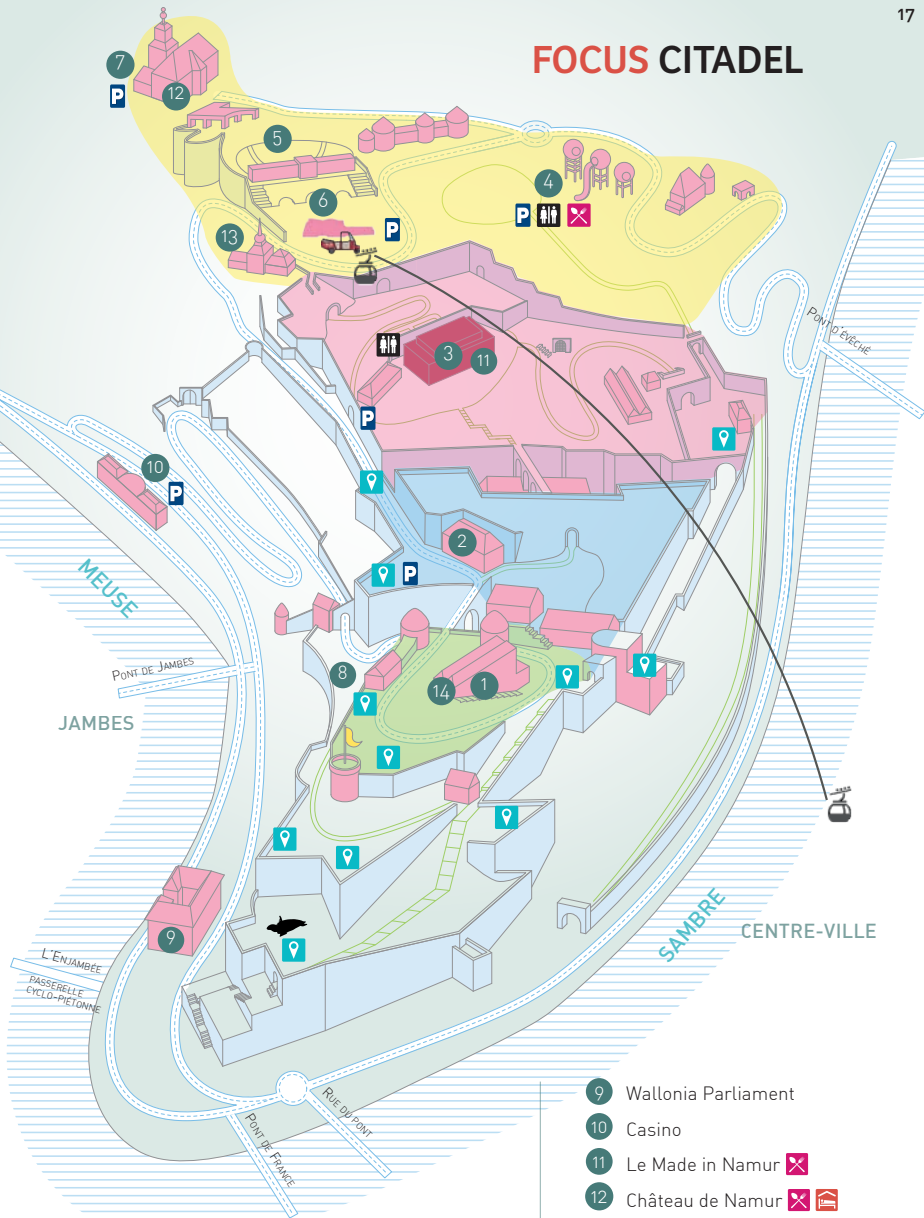
It gives the public the tools to get to grips with and understand the impact of technological innovations on our society. All in a playful and relaxed atmosphere.

Temporary exhibitions,
conferences, workshops,
internships and
performances.

www.le-pavillon.be



FOCUS CITADEL



- 1 Château des Comtes
- 2 G. Delforge Fragrance Workshop
- 3 Terra Nova - tourist welcome centre
Underground Visitor centre
- 4 Queen Fabiola Amusement Park
- 5 Théâtre de Verdure
- 6 Esplanade - Pavillon - Games Stadium
- 7 Garden of fragrances
- 8 Garden of the 2 Towers

- 9 Wallonia Parliament
- 10 Casino
- 11 Le Made in Namur ✕
- 12 Château de Namur ✕ 🏰
- 13 Le Panorama ✕
- 14 Le Fief des Natèfs ✕ [spring 2023]
- 📍 Point of View
- 🚻 WC
- 🅑 Parking
- 🐢 Searching for Utopia Turtle
- 🚠 Cable car
- 🏠 Pavillon
- 🚗 Tuk-Tuk



A confluence in the middle of city...

It's rare enough to merit emphasis!

The Sambre and the Meuse merge there, offering an unbeatable view beneath the fortress's ramparts. Admire the unobstructed view of the Elysette, the Walloon government, which stands almost opposite the Hospice Saint-Gilles and is home to the Parliament of Wallonia.



© WBT - Olivier Bouqui





Namur is a city of water, huddled at the intersection of the magnificent Meuse and Sambre valleys.

It is also at the water's edge that Namur reveals its charm and way of life. **Set sail on the pretty Namourettes, ride leisurely on the embankments of the Meuse and Sambre by bicycle...** Take a gourmet break in an on-board river restaurant or enjoy a terrace with a view of the Citadel and its confluence...

Let the current carry you along on a cruise and set off to explore Namur's waterways.

Discover the Meuse villas that adorn the riverbanks, the seat of the Parliament of Wallonia situated between the river and the Citadel, the Strawberry Museum, which you can visit, and so much more.... **Cross the Enjambée from the Grognon footbridge to get to Jambes (or back)**, or make the most of the view for your selfies! **Wander around the new Confluence Esplanade and question yourself about tomorrow's city at the NID** before taking the Enjambée towards Jambes and the sumptuous Villa Balat.

le nid

EXPLORER
CO-CONSTRUIRE
MONTRER



© Robertw. Selaestien

© Robertw. Selaestien



Le NID
Esplanade de la Confluence 1
5000 Namur
www.le-nid.be

VISIT THE NID

- Wednesday to Friday: 10 am - 5 pm
- Saturday to Sunday: 1 pm - 5 pm
- Duration of visit: 1h
- Audience: From age 12 (adult accompaniment required for under 12s)
- Languages: FR – NL – EN – DE
- Accessible to PRMs
- Entry to the exhibition and free activities
- Reservation required for activities
- Reservation on www.le-nid.be
- Registration is available on-site or by telephone, subject to availability



- The NID, **Intelligent and Sustainable Namur** is a space that puts citizens at the heart of the debate around the future of Namur and questions the role of cities in the face of current and future challenges (climate change, energy dependence, erosion of biodiversity, conflicts, migration, loss of social connection, impoverishment, etc.)
- Visitors will discover 3 spaces and have access to many awareness-raising tools: video capsules, video-mapping, interactive tables and a virtual reality and 3D space. Beyond its scenography, the NID also offers free entertainment and activities for all audiences that are connected to the themes it broaches.
Want to discover the NID and its activities? Visit www.le-nid.be
- A catering space, **la Brasserie de la Confluence**
At the confluence of the Meuse and the Sambre, Chef Ludovic Vanackere offers innovative, sustainable and local cuisine in a bistro style.
 - 70 seats, open 7 days a week
 - All day: possibility to have a drink
 - Lunch and dinner: Savoury and sweet dishes à la carte
 - Afternoon: only sweet foods
 - Information and reservation : +32 470 44 39 29 // www.la-confluence.be





ON BOARD

The Meuse Ardennes

Tel. : +32 81 24 64 49 +32 82 22 23 15

www.croisieres-namur.be

Les «Croisières Namur» offer you a **50-minute trip with commentary between the three Namur locks** (exploration of the historical centre of Namur, the confluence and the Citadel seen from the river...) or a **01:45 cruise linking Namur with Wépion**.

Embarkation: Quai des Chasseurs Ardennais. Pont de Jambes (near the Casino de Namur) See page 58.

L'Olympia

Tel. : + 32 475 49 38 90

www.namur-croisieres.com

Cruise Meuse & Sambre

Cruise Namur - Wépion

Cruise Namur - Profondeville

Board the boat **Olympia** and set off to explore the historical centre of Namur, the confluence and the Citadel seen from the river...

Embarkation: Quai des Chasseurs Ardennais (next to the Enjambée footbridge). Heating





© WBT - Olivier Baillig

The Flow

Paddle club, beach on the banks of the Meuse, beach volleyball and petanque courts, water activities...
From May to September.

Tél. : +32 496 28 28 00

Boulevard de La Meuse 160

(Parking rue Pierre du Diable)

www.facebook.com/theflowbycharliesclub/

Les Namourettes

These little retro-style whaleboats convey you from one bank to the next of the Sambre and the Meuse. They run every day in July and August, as well as at weekends in June and September.

Tel. : +32 81 24 64 49

www.visitnamur.eu



© Axel Komando



**Les Capitaineries
de Namur**

A relaxing leisure space offering a convivial change of scene!

Bar, snacks.

Hire of stand-up paddle, non-permit 7-person boats, kayaks.

Organisation of private events.

PORT DE JAMBES

Boulevard de Meuse - 5100 Jambes

Open from 15 April to 15 October

From 10 a.m.

Tel. : + 32 498 11 21 24

www.lescaptaineries-de-namur.be

lescaptaineriesdenamur@gmail.com



© Les Capitaineries

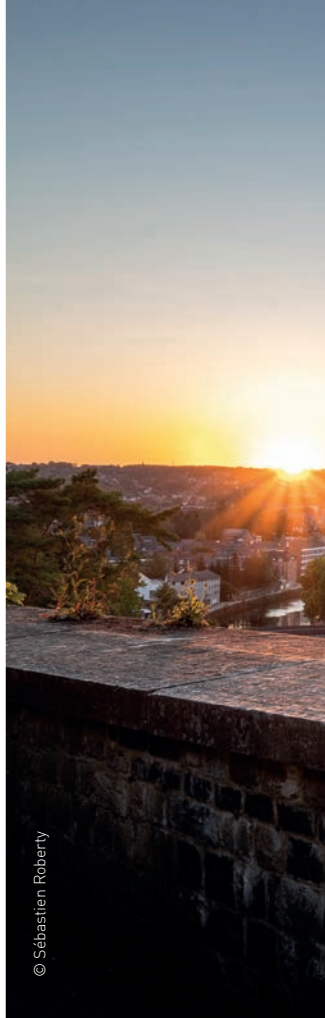


© Les Capitaineries



Wonderful discoveries in all directions...

In Namur, anything goes to convey you from one discovery to the next. Depending on your mood, with or without a guide, set off on your adventures on foot, by bicycle, in a rickshaw, by boat or even on a stand-up paddle...



© Sébastien Roberty



© M. Vogliet



© M. Vogliet



GUIDED TOUR OF THE HISTORIC CENTRE

Our guide takes you to the heart of the city and its history, sharing the ambience with the particular charm of the small streets of the old districts...

- FR/NL/EN and DE on prior request only
- Departure from the Tourist Office at 2.30 pm
- Every Saturday and public holiday in May, June and September
- Every Wednesday, Saturday, and public holiday in July and August
- Prices: 6 € per person - 3 € for students - free for under 12s
- Mandatory reservation at the Tourist Office on +32 81 24 64 49 or www.visitnamur.eu

le Tuk-Tuk de Namur

Visit by Tuk-Tuk

Two narrated tours are available departing from the cable car – Citadel Station.

➡ « The Citadel unveiled »

30 min. 6 kms

Discover the Citadel at a glance!

➡ « Wepion's wonderful strawberry »

60 min. 18 kms

Your driver will lead you to the Wepion Strawberry Museum, passing through the Merveilleuse route and along the Meuse.

Departures every hour from 11 am to 5 pm

Reservation at the latest one day beforehand at

<http://namurinc.be/visite/tuk-tuk/>

In July and August, reservations are recommended but not mandatory.



THEMED TOURS

On foot, by bicycle, historical or gourmet
(in French)

In partnership with the "Guides Touristiques du Namurois", the Namur Tourist Office invites you to (re)discover the city and its surroundings around an original theme.

All information in our brochure "Themed Guided Tours" or at www.visitnamur.eu

THEMED GARDENS

Namur, a city at the heart of nature!

Explore our 5 gardens on various themes!

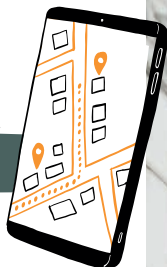
- **The Garden of Scents**
Rue de l'Ermitage, 1 - 5000 Namur
- **The Garden of the Two Towers**
Route Merveilleuse - 5000 Namur
- **The Garden of the Little Fruits**
Chaussée de Dinant, 1092 - 5100 Wépion
- **The Jean Chalon Garden - Symbols**
*Boulevard Frère Orban
Parc Louise-Marie - 5000 Namur*
- **The Garden of Poets**
Rue Fumal, 28 - 5000 Namur

To find out the gardens' opening times:

www.visitnamur.eu



OUR APPS...



JOOKS

The Tourist Office of Namur, in collaboration with the Sports and Culture Services of the City of Namur, has developed tourist running trails (discovery of the city while running), allowing you to discover the tourist and cultural attractions of Namur to the rhythm of your stride!

Download the Jooks app for free, activate the GPS-based geo-location system and choose the trail that suits you. Enable audio commentary to be guided as you wish.

More information: www.jooks.app/fr



Discover the charm of Namur via the Totemus app, hunting for treasures. Completely free. Enjoy an original and unforgettable experience! In French and Dutch

To download the app and for more information: www.totemus.be

Coddy

The Urban Escape Game is a trail game with puzzles to solve and missions to perform. It is no longer from a room you have to escape but from the city!

To download the app and for more information: www.coddygames.com



AT YOUR PACE...

* Discovery circuit

The Tourist Office offers you a circuit that is open to all.

Walk : architectural riches and the most beautiful places in the city centre.

On sale at the Tourist Office: € 1

This itinerary is also available free of charge as an audioguide via the smartphone app **izi.TRAVEL**.

* IGN map

The **Namur Tourist Office** has marked out more than **200 km** of walking trails!

Short or long itineraries, all tastes are catered for! Trails from **5 to 30km**. Departures: Naninne, Wépion, Malonne, Namur, Loyers, Vedrin and more.

www.visitnamur.eu

* Our walks

Looking for some inspiration for a wonderful stroll? **Head straight to our new "Our Walks"** brochure. There you will find **4 signposted itineraries**, which will take you on an exploration of Namur's paths and villages.



© B. D'Almonde - JMI

* E-bike hire

For a wonderful ride on the banks of the Meuse without getting too tired out, an e-bike is a good idea for a day (or two)!

8 speeds, Bosch motor, equipped with padlocks and saddlebags.

Bookings :

Auberge de Jeunesse de Namur

Avenue Félicien Rops, 8

5000 Namur

Tél. : +32 81 22 36 88

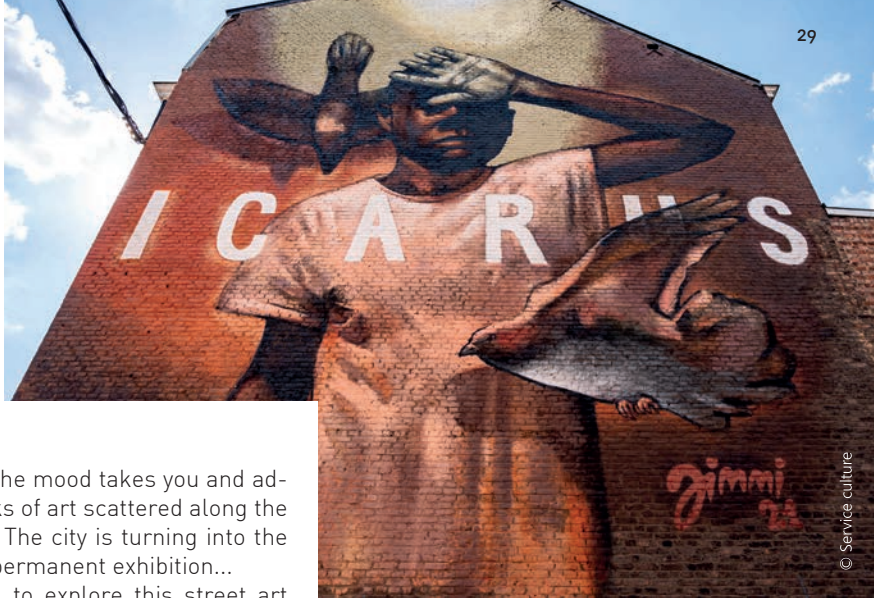
www.lesaubergesdejeunesse.be/namur

* RAVeL

Namur is situated at the intersection of RAVeL itineraries 1 and 2. The first of these cycle paths links **Comines with Visé** while following the valleys of the Sambre and the Meuse (more than 400km), while the second provides a route **to Hoegaarden from Mariembourg (169 km)**

The "Namur-Dinant" route is a very special itinerary.

<http://ravel.wallonie.be>



Street Art

Stroll where the mood takes you and admire the works of art scattered along the urban route. The city is turning into the pretext for a permanent exhibition...

We invite you to explore this street art trail, which will continue to be added to over the years.

www.namur.streetartcities.com

LOOK UP!

Isaac Cordal Sculptures in the city

They have already invaded London, Berlin, Paris, Barcelona, Milan, Malmö and, more recently, Brussels. The miniature sculptures by Spanish artist Isaac Cordal tickle the curiosity and fire walkers' imaginations on each city trip. 45 miniature sculptures by Spanish artist Isaac Cordal are dispersed in the streets of Namur, starting from the City Hall. Ironically, but poetically too, these human figurines tell a story and provoke questioning. An occasion to reflect on the role and place we occupy in society. Or simply to take a new, curious look at the city and its most fragile inhabitants.

www.namur.streetartcities.com





Our attractions

The Citadel

See p. 8

The Cable-car

See p.14

Atelier de Parfumerie Guy Delforge

Citadel of Namur - See p. 12 - 68

Le Delta

See p. 38

The Reine Fabiola amusement park

Citadel of Namur - See p. 12

Tuk-Tuk

See p. 26

E-bike hire

See p.28

Segwaynam

Discover Namur by segway!
Rue Félix Martin 1 - 5020 Flawinne
Tel. : +32 475 66 14 47
www.segwaynam.be



Electric scooters – Kayaks

Péniche Formigny
Quai des Chasseurs Ardennais
+32 497 52 26 12
www.facebook.com/penicheformignygitelfluvial

Trot-e-Fun

For groups of minimum 5 people
Discover the region of Namur in a fun and original way aboard an electric scooter.
Meeting place on request.
www.trot-e-fun.com

Vespa Tour

Feel the wind in your hair
at the wheel of a Vespa!
Chaussée de Liège 159 - 5000 Namur
Tel. : +32 476 34 60 22
www.vespatour-namur.be

Le Meuse Ardennes

See p. 22 - 58

l'Olympia

See p. 22





Les Capitaineries de Namur

See p. 23

Namur sans amarres

For 1 to 3 persons, maximum
Private boat ride in a vintage (speedboat).
2 possible formulas.

Boulevard de la Meuse - 5100 Namur
www.facebook.com/NamurSansAmarres

The Flow

See p.23

Casino de Namur

Avenue Baron de Moreau, 1 - 5000 Namur
Tel. : +32 81 22 30 21
www.casinodenamur.be

Notre-Dame Du Vivier Abbey

The Cistercian abbey crossed the centuries to become a building classified as a historical monument entirely restored to its original state. This exceptional site invites you for relaxation and discovery. In summer, its terrace offers small dishes with a unique view of the Abbey garden. A restaurant/bar "La Chapelle Bethleem" where you can indulge in tasty slow-cooked dishes, Abbey bread and cheese... and why not, accompanied by the "Clem de Castro" beer. Tastings, visits, tours; a place to live the most memorable moments.

Rue Notre Dame du Vivier, 153
5024 Marche-les-Dames
Tel. : +32 81 24 00 24
www.abbayenotredameduvivier.be





Brasserie artisanale de Namur

© Brasserie artisanale de Namur



Brasserie du Clocher

Brasserie artisanale de Namur

It was in this brewery dating back to 1812 that aficionados brought the tasty beers "La Houppé" and "Jambes en l'air" to life. Avenue de la Plante 49 - 5000 Namur
Tel. : + 32 475 38 16 64
www.houppé.be

Brasserie du Clocher

Housed in a former repurposed chapel, the Brasserie du Clocher brewery is the fruit of a project by a whole village and two friends passionate about beer. Sales counter open every Saturday morning from 10 a.m. to 12:30. Guided tour every 3rd Sunday at 11:30 a.m. and 4 p.m.: €8. With tasting: €12
Rue du Petit-Babin, 156 - 5020 Malonne
Tel. : +32 471 10 18 28
www.brasserieduclocher.be



© Vincent Poppe

Fort de Saint Héribert

Tours, events...
Route des Forts - 5100 Wépion
Tel. : +32 478 40 77 78
www.fortsaintheribert.be

Théâtre Jardin Passion

A cultural venue dedicated to and made complete by several vocations.
Rue Marie Henriette, 39 - 5000 Namur
Tel. : +32 472 96 53 16
<https://theatrejardinpassion.be>

Théâtre de Namur

music concerts, exhibitions and meetings
Place du Théâtre, 2 - 5000 Namur
Tel. : +32 81 22 60 26
www.theatredenamur.be

Grand Manège, Namur Concert Hall

A concert hall that seats 800.
Rue Rogier, 82 - 5000 Namur
Tel. : +32 81 71 15 00
<https://grandmanège.mystrikingly.com>

Cinema Caméo

Rue des Carmes 49 - 5000 Namur
Tel. : +32 42 22 27 78
www.grignoux.be/fr/

Cinema Acinapolis

Rue de la Gare Fleurie 16 - 5100 Jambes
Tel. : +32 81 32 04 40
www.acinapolis.be/namur-jambes/

Enigmalock

With your team (2 to 5 persons), you have 1 hr. to solve a series of puzzles and find freedom! Only in French
Rue des Houblonnières, 36 - 5000 Namur
Tel. +32 485 06 30 35
www.enigmalock.be

Escape Room Namur

Solve the puzzles to exit the room!
Avenue Prince de Liège, 96 - 5100 Jambes
Tel. : +32 487 45 52 51
www.escapenamur.be

Le huis clos - Escapes Games ephemeral

60 min. to solve puzzles on premises of a different kind. Only in French
Tel. : +32 471 10 67 49
lehuisclouescapgame@gmail.com
<https://lehuisclouescapgame.wixsite.com/escapenamur>

Aérodrome de Namur

A space dedicated to the passion of aviation.
Rue Capitaine Aviateur Jacquet, 44
5020 Suarlée
Tel. : +32 81 55 93 50
www.aerodromedenamur.be

ParaClub Namur

Parachutists of all levels. Tandem jump, formation, etc.
Rue Capitaine Aviateur Jacquet, 44
5020 Suarlée
Tel. : +32 475 94 79 31
www.paraclubnamur.com

Cap Vol à Voile

Discover the magic of motor-free flight aboard a glider and enjoy the magnificent views.
Rue du Capitaine Aviateur Jacquet, 44
5020 Suarlée
Tel. : 0472 64 65 90
www.planeur.be



© Aérodrome Namur-Facebook

Goolfy - Mini golf indoor

Fluorescent glowing ambience.
Complexe Acinapolis
Rue de la Gare fleurie, 16 - 5100 Jambes
Tel. : +32 81 30 94 00
www.goolfy.com

Bowling de Namur

16 lanes, play area and laser game.
Pierrades et petite restauration, etc.
Chée de Perwez, 251 - 5002 Saint-Servais
Tel. : +32 81 73 10 11
www.bowlingnamur.be

Laser Game Evolution

Score as many points as possible in dark mazes over multiple levels.
Rue de la Gare Fleurie 16 - 5100 Jambes
Tel. : +32 81 40 00 81
<https://lasergame-evolution.com/>

Golf de Rougemont

A magnificent "18-hole".
Chemin du Beauvallon, 45
5170 Profondeville
Tel. : +32 81 41 21 31
www.golferougemont.be

Drakkar Rouge

The 1st themed axe-throwing bar in Belgium.
Rue Patenier, 14 - 5000 Namur
Tel. : +32 81 46 21 04
www.ledrakkarrouge.com



© Guy Focant

Situated in an 18th-century mansion, well hidden behind the stucco of its façade listed as part of Wallonia's outstanding heritage, the hôtel de Gaiffier d'Hestroy is home to treasures of the Middle Ages and the Renaissance.

Among the exhibited masterpieces, the oldest of which date back to the 12th century, we find the Treasure of Oignies, one of Belgium's 7 wonders, renowned sculptures by the Maître de Waha and the paintings of Henri Bles, which evoke the Meuse valley.

Open from 10 a.m. to 6 p.m. Closed on Monday
Price: €3 (€5 with exhibition)



OUR MUSEUMS...



© Service Culture / Ville de Namur



© Service Culture / Ville de Namur



© Service Culture / Ville de Namur



LES BATELIERS

ARCHAEOLOGICAL AND DECORATIVE ARTS MUSEUMS

Rue Saintraint, 7 - 5000 Namur

Tel : +32 81 24 87 20

www.lesbateliers.namur.be

In the heart of Old Namur, a few steps from the Cathedral, Les Bateliers museum centre hosts exhibitions, conferences, concerts, theatrical performances and entertainment throughout the year on an exceptional site combining the former master's house, a chapel from the 19th century and contemporary gallery.

The Decorative Arts Museum, the former mansion of the Counts of Groesbeeck and the marquesses of Croix, with a garden of French inspiration, immerses you in the atmosphere of a prestigious residence of the 18th century. Next to it is the Archaeological Museum (currently in redevelopment phase), which nevertheless aims to make visitors rediscover the archaeological collections devoted to the region of Namur through temporary exhibitions.

A veritable cultural island, Les Bateliers connect the Félicien Rops Provincial Museum, the House of Poetry and the House

of the Count through gardens that make up part of the urban art route (poetry chairs of the Quebec sculptor Michel Goulet, mural by Tamar Kasparian, miniature sculptures by the Spanish artist Isaac Cordal).

Opening times: Tuesday to Sunday from 10 am to 6 pm. Closed on Mondays and public holidays. Free entry. Activities for school groups and families.

Guided tour for groups on request.



© Service Culture / Ville de Namur



Free on the first Sunday of the month



Establishments with the "Bikes Welcome" label



FELICIEN ROPS MUSEUM PROVINCE OF NAMUR



Rue Fumal, 12 - 5000 Namur
Tel : +32 81 77 67 55
www.museerops.be

Situated in the heart of Old Namur, the museum presents the life and work of Félicien Rops, from his début as a caricaturist to his most inflammatory works.

Price: €5

Concessions for students and seniors.

Free for under 12s.

Open from 10 a.m. to 6 p.m., from Tuesday to Sunday. Open daily in July and August. Closed on 24, 25 and 31 December and 1 January.

BROTHER MUTIEN-MARIE MUSEUM



Fond de Malonne, 117 - 5020 Malonne
Tel : +32 81 44 51 65

The museum presents a poignant homage to this 19th-century man of the church, who devoted his life to prayer and teaching. Photos, personal items, clothes and audiovisual room.

Free

Open all year from 9 a.m. to 6 p.m.

MUSEUM OF ANCIENT ART FROM THE NAMUR REGION – OIGNIES TREASURE (TREM.A)



Rue de Fer, 24 - 5000 Namur
Tel : +32 81 77 67 54
www.museedesartsanciens.be

Collections from the Middle Ages and the Renaissance: Oignies Treasure (13th-century gold plate), sculptures, paintings by Henri Bles (16th century). Stucco listed as Outstanding Heritage of Wallonia (18th century).

Price: €3 - With exhibition: €5

Concessions for students and seniors.

Free for under 12s.

Open from 10 a.m. to 6 p.m. Closed on Monday.

STRAWBERRY MUSEUM GARDEN OF SMALL FRUITS



Chaussée de Dinant, 1037 - 5100 Wépion
Tel. : +32 81 46 20 07
www.museedelafraise.com

The strawberry in all its facets: history, culture, commerce and gourmet treats. Farm shop and sampling.


Price: €5

From Tuesday to Sunday from 11 a.m. to 6 p.m.



Free on the first Sunday of the month

COMPUTER MUSEUM NAM-IP (NUMERICAL ARTEFACTS MUSEUM- PIONEERING IT)

Rue Henri Bles, 192A - 5000 Namur 
Tel. : +32 81 34 64 99
www.nam-ip.be

Explore the heritage and history of IT in Belgium, root of the new digital culture.

Price: € 8 - € 6 (- 12 years, students, seniors)
From Tuesday to Saturday from 10 a.m. to 5 p.m.

COMMANDOS MUSEUM

Rue J. Durieux, 80 - 5020 Flawinne
Tel. : +32 2 442 10 13 - +32 2 442 10 10
www.cdomuseum.be

This museum traces the history of the Belgian Commandos from 1942, the year they were founded in Great Britain, to the present day. Discover their hardware, equipment, weapons, vehicles and more.

Admission free.
Open every Saturday from 1 p.m. to 6 p.m.
By appointment: +32 496 59 72 62

CATHEDRAL TREASURY AND DIOCESAN MUSEUM

Place du Chapitre, 1 - 5000 Namur
Access through Saint Aubain's Cathedral
Tel. : +32 498 71 03 16
www.musee-diocesain.be

This museum brings together the cathedral's most precious possessions, and reflects more than 900 years of religious and political history.

Admission € 3/person
Every Thursday, from April to October, from 2 p.m. to 5 p.m.

SAINTE JULIE'S CENTRE

Rue Julie Billiard 17 - 5000 Namur
Tel. : +32 81 25 43 07
<http://www.sndden.be/centre-dheritage>

The history of the Sisters of Our Lady of Namur, a teaching congregation that has a presence on all continents, is preserved in this centre. Its founder, Saint Julie Billiard (1751-1816), devoted her life to education by establishing free schools for impoverished young girls.

From Monday to Friday from 9 a.m. to 12 and from 1 p.m. to 4 p.m. Weekends and groups by reservation. Open to all.

SAINT-LOUP CHURCH

Rue du Collège, 17 - 5000 Namur
Tel. : +32 471 99 58 25
Tel. : + 32 81 21 48 09
www.eglise-saint-loup.be

Saint-Loup church, situated in the historical heart of Namur, is one of the gems of Baroque art in the Former Southern Netherlands. A listed part of Wallonia's outstanding heritage, its interior will impress visitors with the scale and quality of its décor.

Saturday: 11 a.m. – 6 p.m. (from April to September)
11 a.m. – 4 p.m. (from October to March)
Wednesday and Sunday: 2 p.m. – 6 p.m. (from mid-July to mid-September)
Guided tour: Saturday 3 p.m. – €3
Admission free



LE DELTA

Situated at the confluence of the Sambre and the Meuse, at the foot of the Citadel, the Maison de la Culture de Namur cultural centre has recast itself as the **DELTA**. Exhibition rooms, three theatres, recording studios, documentation centre, events and training spaces, panoramic terrace.... The **DELTA** is designed to be a "third place", a lively space of encounters boasting a restaurant, shops and not only that, spaces for just hanging out!

www.ledelta.be





Stop the clock and enjoy...

Ready for a little tour through the cosy pedestrian lanes, dotted with quaint shop windows? Here you will find shops, restaurants or even craftspeople... The art of living well is taken very seriously in the capital of Wallonia.

Wallonia's capital, Namur is also its heart... and Namur's residents have plenty of that! We are happy to prove our generosity by giving you our best addresses, places we love to go and share our legendary art of living well.





Treats not to be missed....

A brief stop at the **Estaminet du Bistro Belge** tavern, some finds at the **Empreinte Belge** boutique, or fine groceries and spirits at the **Caves de Wallonie**, à la carte dining or choices from the menu at **l'Espèglerie**, or tapas at **Limoni**, a hearty dish at the **Temps des Cerises**, a glass of good wine at **Vino Vino**, with something to go with it! Not forgetting the excellent double address for delighting the senses



and relaxing: the restaurant **La Table du Royal Snail** and the designer hotel **The Royal Snail** etc... Yes, Namur is the capital of gourmandism and refinement!

More “on the sweet side”?

Taste bright-red, super-sweet **Wépion strawberries**. You will also not be able to resist the sweetness and crunch of “**Biétrumé**” nutty caramels, with a name inspired by a colourful, mischievous character in Namur folklore. These little marvels can be found at the **Maison des desserts**, Namur’s home of high gourmandism. As an ideal accompaniment to these sweet treats, a good coffee from the **Maison Delahaut** where, several times a day, roasting is done before your eyes, in the shop.

More “on the savoury side”?

Try “**Petit-Gris de Namur**” snails, a strong presence in local gastronomy and also the city’s symbol. Treat yourself to an “**avissance**”, a puff pastry filled with minced meat, served hot or warm.



You will also enjoy refreshing beers in the form of “**Blanche de Namur**” (Brasserie du Bocq), a “**Houppe**” (Brasserie artisanale de Namur) or a “**Philomène**” (Brasserie du Clocher) or one of the Meuse crus (Domaine du Chenoy, Ry d’Argent, Château de Bioul, Château Bon Baron). Not forgetting the traditional “**Pékét**” (Dutch gin), which enjoys pride of place during the unmissable “Fêtes de Wallonie”.

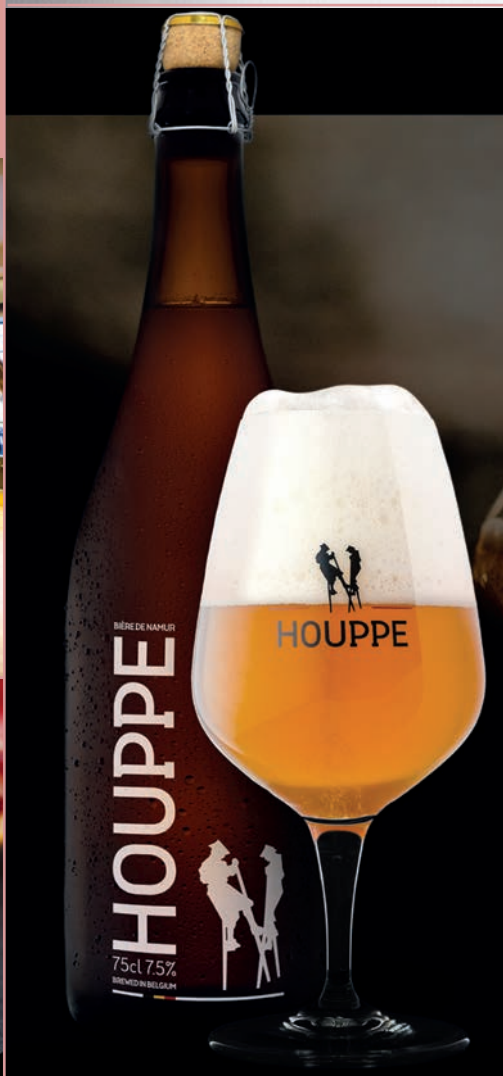
Savoury or sweet, our gourmet treats can be sampled and taken away **Made in Namur** (see p. 13), the self-service for rural products that offers the full range of local and regional products.



© B. D'Almonte - OTN



© MBT - Denis Erroyaux



Our good addresses



Looking to enjoy?

You will be overcome by an impression of an open-air shopping gallery in the city centre. In the heart of the old quarters, give in to the temptation of our vintage, classic, trendy or sophisticated boutiques: a warm welcome is in store for you...





L'Essentiel *

Starred gastronomic restaurant
Rue Roger Clément, 32 - 5020 Temploux
+32 81 56 86.16 // www.lessentiel.be

Attalez-vous *

Starred gastronomic restaurant
Tienne Maquet, 16 // + 32 81 20 10 23
www.attalezvous.be

Atelier de Bossimé ²

MICHELIN Green Star: Gastronomy and sustainability
Gastronomic restaurant – Local products
Rue de Bossimé, 2 - 5100 Loyers
+ 32 478 13 71 25 // www.atelierdebossime.be

Les Potes au Feu

Prix Gastro Bistro 2021 Gault&Millau
Bistronomie
Avenue de la Plante, 4 // +32 81 64 04 44
www.facebook.com/lespotesaufeu.bistronomie/

La Plage d'Amée

Gastronomic restaurant
Rue des Peupliers, 2 - 5100 Jambes
+32 81 30 93 39
<http://laplagedamee.be>

La Table du Royal Snail

Bistro restaurant in a designer hotel
Avenue de la Plante, 23 // + 32 81 57 00 23
www.theroyalsnail.com

L'Espèglerie & Le Grill des Tanneurs

Hotel, gastronomic restaurant and grill
Rue des Tanneries, 13 // +32 81 24 00 24
www.tanneurs.com

La rue de demain

At the Delta – Refined cuisine
Rue des Bouchers, 19 // + 32 81 44 44 49
<https://laruededemain.be>

La Confluence

Brewery - Local, seasonal and sustainable menu
Rue du Grognon, 1 // +32 470 44 39 29
www.la-confluence.be

Le Panorama

Bistro Restaurant
View of the Meuse valley
Route Merveilleuse, 82
+ 32 81 65 58 71
www.panoramamanamur.be

Les Terrasses de l'Écluse

Brasserie
Chaussée de Liège, 477 // +32 81 30 33 60
<https://terrasses-ecluse.be>

Brasserie du Quai

Restaurant - Brasserie - Seafood
Rue du Quai, 9 // + 32 81 65 70 03
www.brasseriequai.be

Brasserie François

Traditional cuisine
Place Saint-Aubain, 3 // + 32 81 22 11 23
www.brasseriefrancois.be

Brasserie Le Royal

Traditional cuisine
Place du Théâtre, 2
+32 81 22 01 33

L'Estaminet du Bistro Belgo Belge

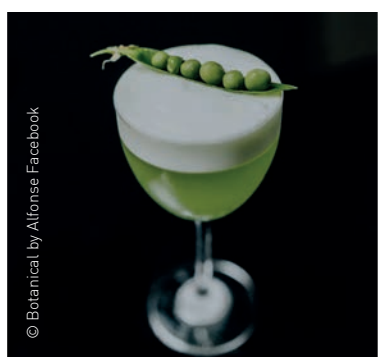
Belgian bistro
Rue Saint-Joseph, 20 // +32 81 81 00 82
www.estaminetbbb.be

Le Temps des Cerises

Rural cuisine
Rue des Brasseurs, 22 // +32 81 22 53 26
www.cerises.be



© Gadsby



© Botanical by Alfonso Facebook

Bistro Bisou

« Homemade » cuisine
Rue des Fossés Fleuris, 44 // + 32 81 22 21 04
www.bistrobisou.be/fr

La Maison des Desserts

Pâtisserie & restaurant
Rue Haute Marcelle, 17 // +32 81 22 74 51
www.maison-des-desserts.be

Limoni

Restaurant and tapas bar
Rue de la Croix, 48 // + 32 81 22 85 00

Gadsby Burgers

Specialty burgers
Rue Lelièvre, 4 // + 32 81 26 25 65

Vino Vino

Wine bar
Rue des Brasseurs, 61 // +32 81 26 00 51
www.vinovino.be

La Veuve Bila

Bar and finger food menu
Rue Général Michel, 39 // + 32 81 24 11 38
<https://la-veuve-bila.odoo.com>

Les Cup'inn

Cupcake specialities
Rue Haute Marcelle, 11 // + 32 81 41 10 13
www.lescupinn.com

Coffee & More

Home-made pastries, breakfast, lunch, soup, sandwiches, pancakes, desserts, coffees...
Rue Emile Cuvelier, 21 // +32 81 41 14 16
www.facebook.com/coffeeandmorenamur

Botanical by Alfonso

Cocktail bar dedicated to mixology and botany
Rue des Brasseurs, 46
www.alfonseandstuff.com

Barnabeer

Beer bar
Rue de Bruxelles, 39
www.facebook.com/barnabeer39/

Arsène Café

Local and cultural bar
Rue des Brasseurs, 19
+32 81 34 64 73
www.arsenecafe.be

Oenothèque Grafé

Wines, champagnes, fine alcoholic beverages
Place Saint-Aubain 9/13 // +32 81 22 43 15
www.grafe.be/

Cafés Delahaut

- Shop
Rue de l'Ange, 21 // +32 81 22 11 58
www.cafesdelahaut.be
- Restaurant
Rue Marie Curie, 1 - 5020 Suarlée
www.restaurantcafesdelahaut.be

Cave de Wallonie-Côté Terroir

Fine groceries
Rue de la Halle, 6 // +32 478 56 57 15
www.edzdiffusion.be/coteterroir.html

Beer Craft Market

Belgian and foreign beer boutique
Marché Saint-Remy, 14 // +32 477 53 99 23
<https://www.craftbeermarket.be>

L'Empreinte Belge

Gifts, Belgian specialities and snacks
Rue des Carmes, 69 // +32 474 06 38 95
lempreintebelge.wixsite.com/lempreintebelge

Sapristi

Slow deco shop
Rue des Brasseurs, 13
+ 32 81 22 54 80
<http://www.sapristi.design/>



© Tendance Glacée

Mais qui es-tu ?

Belgian label clothing
Rue de la Croix, 54 // +32 081 40 05 35
www.maisquiestu.be

Ten Concept Store

Women's fashion
Rue Saint-Loup, 2B // +32 81 61 06 95
www.facebook.com/tenconceptstore/

Un petit coin de parapluie

Second-hand vintage
Rue des Carmes, 15 // +32 81 22 55 03
www.unpitcoindeparapluie.com

Il fera beau demain

1001 ideas for giving and receiving pleasure
Rue Saint-Loup, 12 // +32 81 22 81 06
www.ilferabeaudemain.be

Les Badasses

Shopping, relaxation, well-being on the Charles barge.
Rue du Quai // +32 494 33 73 43
www.lesbadasses.com

Ramd'Âm

Purchase and sale of books, comics, CDs, vinyls, DVDs, board games...
Rue des Carmes, 52 // +32 81 65 54 34
www.boutiqueramd.com

Fancy an ice cream?

TENDANCE GLACÉE

Rue Marcel Vandy, 43 - 5020 Flawinne
+32 81 74 06 84
www.tendanceglacee.com

GLACETRONOME

Rue Magy, 73 - 5100 Jambes
+32 493 933 533
www.glacetronyme.be

FLEUR DE LAIT

Chaussée de Dinant, 910 - 5100 Wépion
+32 81 46 05 30

MAURICE GLACIER

Place Maurice Servais, 11
www.facebook.com/mauriceglacier

CORNET OU PETIT POT

Rue des Fripiers, 3
+32 470 45 31 52
www.cornetoupetitpot.com

LE GLACIER DE NAMUR

Place de l'Ange
+32 81 23 02 90
www.leglacierdenamur.be



© www.tendanceglacee.com - www.glacetronyme.be - www.fleurdelait.com - www.mauriceglacier.com - www.cornetoupetitpot.com - www.leglacierdenamur.be

RELAX

The Royal Snail Hotel & Spa ****
Avenue de la Plante, 23
+32 81 57 00 23
www.theroyalsnail.com

Ne5t Hôtel & SPA ****
Allée de Menton, 26
+32 81 58 88 88
www.ne5t.com



© The Royal Snail Hotel



Sleep and dream away...

Night-time reveals other ambiances... The heat of the city centre or enjoying an after-show drink at the water's edge, an evening of strolling through the historical heart...





es Welcome" label

© Sébastien Roberty

Hotels



The Royal Snail *****

Av. de la Plante, 23 - 5000 Namur
+ 32 81 57 00 23 | www.theroyalsnail.com
30 rooms. From €98

Ne5t Hôtel e SPA *****

Allée de Menton, 26 - 5000 Namur
+ 32 81 58 88 88 | www.ne5t.com
6 suites. From €220



Château de Namur *****

Av. de l'Ermitage, 1 - 5000 Namur
+ 32 81 72 99 00 | www.chateaudenamur.com
29 rooms. From €150



Les Tanneurs *****

Rue des Tanneries, 13 - 5000 Namur
+ 32 81 24 00 24 | www.tanneurs.com
35 rooms. From €75

Grand Hôtel de Flandre ***

Place de la Station, 14 - 5000 Namur
 + 32 81 23 18 68 | www.hotelflandre.be
 33 rooms + 6 studios.
 From 75 to €149

**Ibis Namur Centre** ***

Rue du 1^{er} Lanciers, 10 - 5000 Namur
 + 32 81 25 75 40
www.accorhotels.com/3151
h3151@accor.com
 92 rooms. From €78

Ibis Styles ***

Avenue Ecolys, 2 - 5020 Suarlée
www.ibis.com | HB6A4@accor.com
 + 32 81 74 55 55
 99 rooms. From €69

Villa Gracia ***

Chée de Dinant, 1455 - 5100 Wépion
www.villagracia.com
hotel@villagracia.com
 + 32 81 41 43 43
 8 rooms. From €130

Bed and breakfast

**CitaBel'Air** ****

Avenue Bel Air, 6 - 5000 Namur
 + 32 473 59 38 41
citabelair@proximus.be | www.citabelair.com
 1 room. From 130 to €140

**Villa Balat** ****

Quai de Meuse, 39 - 5100 Jambes
 + 32 473 30 55 00
info@villabalat.be | www.villabalat.be
 3 rooms. From 125 to €180

Clos du Berger ****

Bois Saint-Antoine, 3a - 5100 Wépion
philippe.bihain@gmail.com |
www.clos-du-berger.be
 + 32 479 77 28 48
 1 room. From 60 to €75

Le Manoir Ivoire ****

Chée de Dinant, 642 - 5100 Wepion
info@manoir-ivoire.com | www.manoir-ivoire.com
 +32 477 52 75 60
 4 rooms. From 115 to €160

Clos de l'Ecluse ****

Boulevard de Meuse, 138 - 5100 Jambes
bb5100@outlook.com
 +32 476 88 05 12
 1 room. From €85

La Noiseraie ****

Avenue d'Ecolys 44-46 - 5020 Suarlée
info@lanoiseraie.be | www.lanoiseraie.be
 +32 471 78 99 77
 4 rooms. From 109 to €149

**Le Jardin des Secrets** ****

Chaussée de Dinant, 131 - 5000 Namur
www.le-jardin-des-secrets.be/fr
 + 32 471 83 58 22
 3 rooms. From 95 to €130

La Bergerie de Lives ****

Rue de Mosanville, 100 - 5101 Namur
 +32 493 86 10 29
labergeriedelives@gmail.com
www.bergerielives.be
 1 room. From 125 to €210

Cocoon ****

Avenue Vauban, 43
 5000 Namur
 + 32 477 76 63 81
admin@chambres-hotes-cocoon.be
 €120/night - 1 room

**Avou Nozôtes** ****

Avenue Marcel Gourdin, 2 - 5001 Belgrade
 + 32 470 23 40 08
www.avounozotes.be
info@avounozotes.be
 From 90 to €370 - 2 rooms

Les Volets Bleus ****

Rue Juppín, 22 - 5000 Namur
 + 32 468 42 69 94
lesvoletsbleus@proximus.be
 1 room. From 85 to €95

Côté Fontaine 🌳🌳

Rue de la Fontaine, 43 - 5022 Cognelée
 info@cotefontaine.be | www.cotefontaine.be
 + 32 81 20 04 75 + 32 478 63 93 88
 2 rooms. From €65
 Reduction if 3 nights or additional persons

Le Clinchamp 🌳🌳

Rue du Clinchamp, 65 - 5020 Malonne
 + 32 81 44 50 36 + 32 476 41 57 63
 micheduvivier@gmail.com | www.leclinchamp.be
 2 rooms. From 50 to €70

La Majolique 🌳🌳

Rue de la Majolique 3 - 5020 Malonne
 + 32 475 53 17 20
 lamajolique@gmail.com
 2 rooms. €120

Le Beau Vallon 🌳🌳

Chemin du Beau Vallon, 38 - 5100 Wépion
 + 32 81 41 15 91
 www.lebeauvallonwepion.be | bed@deribaucourt.be
 4 rooms. From 60 to €80

Accueil Champêtré 🌳🌳

Rue des Aubépines, 28 - 5101 Erpent
 + 32 81 31 06 40
 1 room. From 60 to €90

Les Baloûches 🌳🌳

Tiennes aux Baloûches, 6 - 5002 St-Servais
 + 32 474 79 41 03
 www.lesbalouches.be
 lesbalouches.namur@gmail.com
 1 room. From €57

Gites**La Petite Ferme Bleue** 🌳🌳

Rue du Moinil, 18 - 5101 Loyers
 + 32 479 33 95 77
 brigitte.rolin@gmail.com
 https://namurgite.be/fr/
 12 persons. From 535 to €1300

Gîte du Curnolo 🌳🌳

Rue de Curnolo, 15 - 5020 Malonne
 info@gitecurnolo.com | www.gitecurnolo.com
 + 32 476 75 02 76
 6 persons. From 75 to €470

Ferme du Haut Daussoulx 🌳🌳

Rue de l'Echangeur, 36 - 5020 Daussoulx
 + 32 476 59 31 66
 15 persons. From 400 to €600

À la Pointe de l'Île-Rops 🌳🌳

Avenue Félicien Rops, 7 - 5000 Namur
 + 32 476 99 29 22 + 32 496 70 59 92
 alapointedelilegites@gmail.com
 2 persons/gîte (3 gites).
 From €450

Gîte du Prieuré 🌳🌳

Rue Regnié Durette, 11 - 5001 Erpent
 yvesetchristine@gite-du-prieure.be
 www.gite-du-prieure.be
 + 32 476 66 63 72
 4 persons. €100. Degressive rate

Le Manoir d'Atys 🌳🌳

Rue du Mologna, 5 - 5101 Erpent
 + 32 475 39 72 47 - + 32 81 31 09 97
 edouard.destreel@freebel.net
 8 persons. From 250 to €650

Le P'ti Canon 🌳🌳

Route des canons, 4b - 5000 Namur
 + 32 494 57 69 79
 valerie.leleux@hotmail.com
 5 persons. €145

Au Fil des Pages 🌳🌳

Rue Léanne, 29 - 5000 Namur
 www.aufildespages.be
 info@aufildespages.be
 + 32 478 62 58 91
 4 persons. From 90 to €780

**Le Relais du Malpas** 🌳🌳

Place du Malpas, 9 - 5020 Malonne
 www.relaismalpas.be | info@relaismalpas.be
 + 32 477 29 83 50
 9 persons. €750/2 nights



**Villa Léanne**

Rue Léanne, 82 - 5000 Namur
 + 32 495 84 40 53
 villa@leanne.be | www.leanne.be
 2 persons. €220/2 nights. Degressive rate

La maison « Caracole »

Rue du Président, 32 - 5000 Namur
 info@lesgitesduvieuxnamur.be
 www.lesgitesduvieuxnamur.be
 + 32 475 45 76 00
 2 persons par appartement.
 Degressive rate : from 85 to €35

Namur - Energîte

Avenue Albert 1^{er}, 95C - 5000 Namur
 namurenergite@sudepervier.be
 www.namur-energite.be
 + 32 496 54 40 67
 3 persons. From 60 to €90

Au Maupelin

Chemin de Maupelin, 8 - 5020 Malonne
 www.malonne.com
 info@malonne.com
 + 32 477 37 85 06
 4 persons. €100

Gîte du Piroy

Chemin des Pierres, 32 - 5020 Malonne
 www.gitedupiroy.com
 gitedupiroy@gmail.com
 + 32 473 51 30 88
 6 persons. From 280 to €400

**Le Jardin des Secrets**

Chaussée de Dinant, 131 - 5000 Namur
 www.le-jardin-des-secrets.be/fr
 + 32 471 83 58 22
 4 persons. €130/night (min 2 nights)

Le Savoie

Rue Catherine de Savoie, 23
 5000 Namur
 www.gitenamurcentre.com
 + 32 495 51 10 42
 8 persons. From 128 to €158

Le Savoie II

Rue Catherine de Savoie, 23
 5000 Namur
 www.gitenamurcentre.com
 + 32 495 51 10 42
 6 persons. From 98 to €128

La Maison Rops

Rue du Président, 49
 5000 Namur
 www.lesgitesduvieuxnamur.be
 info@lesgitesduvieuxnamur.be
 + 32 475 45 76 00
 2 persons per apartment
 Degressive rate from 75 to €35
 4 persons per apartment
 Degressive rate from 110 to €65

Le Cabri ô Lait

Chemin des Aides, 3 - 5004 Bouge
 + 32 479 43 29 72
 www.lecabriolait.be
 gitelecabriolait@gmail.com
 2 persons. From 115 to €440

ARD&D

Rue Bougmestre Fernand Colon 22
 5020 Malonne
 + 32 497 34 21 39
 ardd77@hotmail.com
 6 persons. €100

L'Ermitage

Rue Bougmestre Fernand Colon, 68
 5020 Malonne
 + 32 476 45 99 64
 www.gitelermitage.be
 cornetcallens@gmail.com
 9 persons. From 700 to €1350

Le 44

Rue Chepson, 44 - 5020 Malonne
 + 32 478 34 94 88
 caroline@joassin.com
 www.gitele44.com
 7 persons. From 135 to €220

Au four et au jardin 🏡

Rue Lieutenant Colonel Maniette, 18
5020 Temploux
+ 32 478 53 21 51
www.giteaufouretaujardin.be
temploux@giteaufouretaujardin.be
3 persons. From 140 to €100. Degressive rate

Bord de Meuse 🏡

Rue du rivage, 10 - 5100 Dave
+ 32 474 54 93 21
www.borddemeuse.be
welcome@borddemeuse.be
7 persons. From 385 to €650

O17 🏡

Rue des Azalées, 17 - 5001 Belgrade
+ 32 474 27 79 61
https://gitenamuro17.wixsite.com/mysite
maryline.minet@gmail.com
4 persons. €146

**Le Temps de Liresse** 🏡

Rue du Château de Saint Marc, 120
5003 Saint-Marc
+ 32 476 88 89 47
www.letempsdelivresse.com
info@letempsdelivresse.com
3 persons. From 100 to €150

Les Cardamines 🏡

Comognes de Temploux, 16
5020 Temploux
+ 32 475 27 08 30
lescardamines@hotmail.com
4 persons. From 160 to €290

ô 29 🏡

Fond de Malonne, 29 - 5020 Malonne
www.o29.be
+ 32 485 76 97 19
9 persons. From 800 to €1100

Le Poulailier de Pinpin 🏡

Boulevard de la Meuse, 165 - 5100 Jambes
+ 32 494 59 52 10
alissoir@hotmail.com
4 persons. From 80 to €100

Le Refuge 🏡

Avenue Vauban, 43 - 5000 Namur
+ 32 477 76 63 81
admin@chambres-hotes-cocoon.be
€100/night - 4 persons

Barges**MS Elisabeth**

Quai des Chasseurs Ardennais
croisieres@mselisabeth.com
www.mselisabeth.be
+ 32 495 43 18 61
5 cabins. From 109 to €149

l'Ange-Gabriel

Quai des Chasseurs Ardennais
info@ange-gabriel.be | www.ange-gabriel.be
+ 32 487 88 56 87
4 cabins. €69

La Valse lente

Quai des Chasseurs Ardennais
lavalselente@gmail.com
www.lavalselente.be
+ 32 479 56 91 16
4 cabins. From 75 to €95

Le Formigny

Quai des Chasseurs Ardennais
+ 32 497 52 26 12
philippe.formigny@gmail.com
www.facebook.com/penicheformignygitefluvial
3 cabins. From 75 to €125

L'Arcadia

Rue du Quai
 +32 474 79 81 45
 julien.s.paquet@gmail.com
 www.peniche-arcadia.com
 From 150 to €250

Avenue Rops 🚰🚰🚰

Avenue Félicien Rops, 2 - 5000 Namur
 www.avenuerops.be
 info@avenuerops.be
 + 32 496 26 53 03
 From 110 to €150

Camping**Les Trieux ****

Les Tris, 99 - 5020 Malonne
 camping.les.trieux@skynet.be
 www.campinglestrieux.be
 + 32 81 44 55 83 +32 473 81 07 42
 On request

Motorhomes

8 space parking and service terminal (drinking water supply, emptying of household water and WC containers).
 Price: €7.50 per use of the terminal.
 Free parking.
 GPS co-ordinates:
 50° 28.066', 4° 51.004'
 Follow arrows to "Namur Expo"

Furnished tourist accommodation**La Huche** 🚰🚰🚰

Rue Bourgmestre Fernand Colon, 8
 5020 Malonne
 www.gitenamur.be
 + 32 477 18 32 22
 4 persons. From 89 to €119

Youth hostel**Auberge de Jeunesse Félicien Rops**

Av. Félicien Rops, 8 - 5000 Namur
 namur@lesaubergesdejeunesse.be
 www.lesaubergesdejeunesse.be
 +32 81 22 36 88
 103 persons. From €19



Circus
CASINO
RESORT
NAMUR

**THE ONLY CASINO RESORT
IN BELGIUM**

A UNIQUE ENTERTAINMENT EXPERIENCE
HÔTEL**** – RESTAURANT – BAR – TERRASSES
WELLNESS – SEMINARS & EVENTS – CASINO

Grand Hotel De Flandre***



- 3 star hotel
- Located in the city centre opposite the Railway Station of Namur
- Situated in a landmark building of more than 100 years old
- 33 large and renovated bedrooms

- Air conditioning
- Soundproof windows
- Coffee and tea making facilities
- Free Wi-Fi
- Flatscreen TV
- En-suite bathroom



- Bar
- 24 hour reception service
- Dry cleaning services
- Varied buffet breakfast
- Car and bicycle hire

For more information or to make a reservation, contact us on:
+32 (0)81 23 18 68 - info@hotelflandre.be

Place De La Station, 14 - 5000 Namur
www.hotelflandre.be

CROISIÈRES NAMUR Marsigny



EMBARKATION
QUAI DES CHASSEURS ARDENNAIS
PONT DE JAMBES
(NEAR CASINO DE NAMUR)



**NAMUR - SAMBER & MAAS (50 MIN.),
RETURN TRIP** NO CRUISES ON WEDNESDAYS

Departure : from the 01/04 to the 30/06 and from
the 01/09 to the 30/09 at 1:30 p.m., 3 p.m., 4 p.m.

From the 01/07 to the 31/08 at 11 a.m., 1.30 p.m.
and 5 p.m.

Price : Adult: € 10 - Child: € 7 and group (+20 pers.) :
€ 8 - School: € 6,50

NAMUR - WEPION (1H45), RETURN TRIP
NO CRUISES ON WEDNESDAYS

Departure : 3 p.m. from the 01/07 to the 31/08.
Price : Adult: € 15 - Child: € 11- Group (+20
pers.) : € 13,50 - School: € 10

**CRUISES POSSIBLE TO ANNEVOIE, YVOIR OR
DINANT.**

Every Wednesday by booking for groups
(minimum 40 pers.).

Rue Daoust, 64 - 5500 DINANT

Tel : +32 82 22 23 15 ✦ +32 81 24 64 49

www.croisieres-namur.be ✦ christian.marsigny@gmail.com

BISTER

THE BELGIAN
TASTE



VISIT THE BISTER MUSTARD FACTORY

*Discover the secrets of our production
and the history of the Bister family.*

GROUP VISITS

Guided tours the whole year upon
reservation (min 15 pers - max 100 pers)
+ small goodie bag at the end

Catering for groups: we welcome
you for a dinner prepared with Bister
products (upon reservation).



Booking is necessary

TOURISME ET TRADITION

Do you want a full day with visits
in Wallonia ? Contact us !

GSM: +32 496 43 77 38

info@tourisme-et-tradition.be

www.tourisme-et-tradition.be

INDIVIDUAL VISITS

Guided tours from mid-June until
end of September (every day except Friday)
at 9.45 - 11.00 - 14.00.

Informations :

Price rate : - group : 8€ / 1h30

+ 1,50€ for the kids workshop

- individual : 9€ / 1h

Bookings : +32 496 43 77 38



BISTER MUSTARD FACTORY

10, rue du Parc Industriel d'Achêne,

5590 Ciney, E411 uitrit 20 ter

www.bister.com

 bister_belgium  @bister_s.a



COME TAKE YOUR TIME IN NAMUR

+32 (0)81 22 36 88 . namur@laj.be

- ✓ Comfy beds
- ✓ Generous breakfast
- ✓ Tips from our teams
- ✓ All that at accessible prices



...and in our other hostels in Wallonia and Brussels

OUR HOSTELS IN NATURE

- Bouillon
- Champlon
- Malmedy

OUR HOSTELS IN THE CITIES

- Tournai
- Mons
- Charleroi
- Liège
- Bruxelles



www.lesaubergesdejeunesse.be . info@laj.be . [f LesAubergesDeJeunesse](https://www.facebook.com/LesAubergesDeJeunesse) . [i hi_hostels_belgium](https://www.instagram.com/hi_hostels_belgium)





Ibis Namur Centre ***

Only 5 minutes away from the city center

92 comfortable rooms

- Sweet Bed by Ibis
- Air conditioning
- Shower and private toilet
- Satellite TV
- Hairdryer

Rooms for 1, 2 or 3 persons

24/7 welcome, bar en snacks

Multilingual and smiling staff at your service

Free Wi-Fi throughout the hotel

Paying private car parking, free bicycle parking

Pets allowed (paying)



rue du 1er Lanciers, 10 - 5000 Namur
 Tél.: +32 (0)81 25 75 40 - Fax : +32 (0)81 25 75 50
 H3151@accor.com
 ibis.com - all.accor.com



THE DELTA, A CULTURAL COMPLEX BRIMMING WITH LIFE AT THE HEART OF NAMUR



Near the Citadel and the Confluence of the Sambre and the Meuse lies an unusual place: the Delta.

The former Cultural Centre of the Province of Namur has become a cultural space comprising several theatres or concert halls and exhibition spaces, as well as a shop. It also has a welcoming lobby open to all, where you can stroll around, read, enjoy a picnic and admire the breathtaking view from the panoramic terrace, one of the finest in Namur.

Outside, the modern style of this complex is well worth a visit, making the Delta an unmissable spot for lovers of architecture...and selfies! The programme includes plays, concerts, circus and dance performances, exhibitions and more. So be sure to come along to the Delta and discover this cultural site in Namur.

VISITING NAMUR? HERE ARE FIVE GOOD REASONS TO COME TO THE DELTA!

- ① Its impressive architecture
- ② Its panoramic terrace and great places to enjoy yourself and relax
- ③ Its outstanding cultural programme (a concert, an exhibition not to be missed)
- ④ Its ideal location between the Citadel and the new Confluence space
- ⑤ Its on-trend restaurant on the banks of the Sambre

PRACTICAL DETAILS

Avenue Golenvaux, 18 – 5000 Namur

Open Tuesday to Friday from 11 am to 6 pm and at the weekend from 10 am to 6 pm.

+32 (0)81 77 67 73 / info@ledelta.be

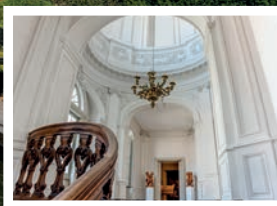
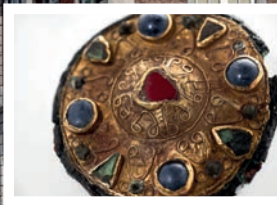
See the full programme on www.ledelta.be



LES BATELIERS



63



Free access
Museum of Decorative Arts:
from January to December

NEW !
Archaeological Museum:
Exhibition from March to September

Les Bateliers, **located at the heart of Namur**, is home to two municipal museums, the Archaeological Museum and the Museum of Decorative Arts with its garden in the French style. Listed as part of the exceptional heritage of Wallonia, the Museum of Decorative Arts is housed in a magnificent private mansion dating from the Age of Enlightenment, the Hôtel de Groesbeeck-de Croix. The museum, which has a lovely French-style garden, displays a superb collection of decorative art spanning the period from the 17th to the 19th centuries: furniture, timepieces, paintings, sculptures, crystal, earthenware and more. These pieces, created by artists and workshops in Namur, bear witness to the daily lives of the aristocracy in the 18th century.

The Archaeological Museum of Namur has built up a major reputation in Europe due in particular to its collections from late Roman Times and the Merovingian period. The collections of the Archaeological Museum of Namur are among the richest of the Wallonia-Brussels Federation. The items kept here extend from Prehistoric Times to the early Middle Ages or even the contemporary period as regards the lapidary collections. The pieces come mainly from the Province of Namur and the surrounding area.



NAMUR
CAPITALE

Monday: Closed
From Tuesday to Sunday: 10:00 a.m. - 6:00 p.m.
Les Bateliers
Rue Joseph Saintraint 3 à 5000 Namur - 081/24 87 20
www.lesbateliers.namur.be · [lesbateliersnamur](https://www.facebook.com/lesbateliersnamur)





STREETS OF NAMUR

- Abbaye (quai de l') A1
 Aden et roi (sentier) C2
 Albert 1er (avenue) B6
 Amoureux (sentier des) C2
 Ange (rue de l') B4-C4
 Ange (place de l') B4
 Ardennes (pont des) C5
 Armée Grouchy (rue de l') A2
 Armes (place d') B4-C4
 Arsenal (rue de l') B3
 Astrid (parc reine) D5-E5
 Astrid (avenue reine) B2-C2
 Asti Moulin (rue) A3
 Bailly (rue du) C4
 Baivy (rue) D5
 Bas de la place (rue) C4
 Bas-prés (rue des) B1
 Basse Marcelle (rue) B3
 Basse Neuville (rue) B5
 Bastin (rue Adolphe) A3
 Bavière (rue de) B4
 Bayar (rue Denis-Georges) A3
 Beffroi (rue du) B4
 Bel Horizon (rue) A5
 Belvédère (rue du) C1
 Berenger (chemin) D2
 Biches (tienne des) D3
 Billiard (rue Jullie) B4
 Blanche de Namur (av.) E2
 Blès (rue Henri) B1
 Bleuets (rue des) C5
 Blondeau (rue) B2-B3
 Boileau (chemin) D2
 Bord de l'eau (rue) C3-C4
 Bordial (porte de) C3
 Borgnet (rue) A4
 Bosret (rue) B2-C2
 Bouchers (rue) C4
 Boufflers (sentier de) C2
 Bourgeois (rue des) B5
 Bovesse (av. gouverneur) C5-D5
 Brabant (rue Jean-Baptiste) B5
 Brasseurs (rue des) C3-C4
 Brigades d'Irlande (rue des) D5
 Brunel (boulevard Isabelle) C5
 Bruno (rue) B2-B3
 Bruxelles (rue de) B3
 Burniaux (rue) C5
 Calozet (rue J.) A2
 Cambier (rue Père) A2-B2
 Canons (route des) C3
 Capucins (venelle des) B4
 Carmes (rue des) B3
 Carrières (rue des) A5
 Catherine de Savoie (rue) C3
 Cauchy (boulevard) A5-B5
 Champêtre (rue) C5
 Chapitre (place du) B3
 Collège (rue du) B3
 Colline (rue de la) C1
 Colson (rue J.) C1
 Combattants (avenue des) A2
 Confiturerie (rue de la) D5
 Coppin (rue de) D4-E4
 Coquelet (rue de) A5
 Coquelicots (rue des) C5
 Cotelis Jambois (rue des) D5
 Courtenay (rue) B5
 Courtoy (quai Ferdinand) C3-C4
 Couvent (rue de) D4
 Croisiers (rue des) B3-B4
 Croix (rue de la) B3-B4
 Croix du Feu (avenue des) A2
 Croix Rouge (rue de la) C5
 Cuvelier (rue Emile) B4
 Dame (avenue de la) E5
 Dames Blanches (rue des) B4
 Daubancourt (rue Larcher) A4-A5
 Dave (rue de) D4-E4
 Del Marmol (rue A.) D1
 Delvaux (rue) A4
 de Moreau (av. baron) D3
 Descamp (place chanoine) C3-C4
 de Smet de Neyser (av.) B5
 de Stassart (avenue) B2
 Dewez (rue) A4
 Dodane (rue de la) A2
 Dufer (rue F.) B1
 Echasseurs (rue des) C4
 Ecluse (quai de l') A2
 Ecole des Cadets (pl. de l') B5
 Enfer (ruelle de l') A2
 Enhaive (rue d') D5
 Ernotte (rue) A2
 Etoile (rue de l') B4
 Evêché (pont de l') C3
 Fatmagne (place G.) B2
 Fer (rue de) B4
 Florence (rue Balthazar) B1
 Folliette (Chemin de la) C2
 Fond des Bas-prés (rue) A1-B1
 Fort d'Orange (chemin du) D2
 Fossés Fleuris (rue des) C3-C4
 France (pont de) C4
 Frère Orban (boulevard) B3-C3
 Fripiers (rue des) C4
 Fumal (rue) B3-C3
 Gaillot (rue) A4
 Gare (avenue de la) A3-A4
 Gembloux (rue de) A2
 Godefroid (rue) B3
 Godin (place Louise) C1
 Golenvaux (avenue) C4
 Grafé (rue Joseph) B3
 Grangagnage (rue) D3
 Gravière (rue de) B4
 Grognon (rue du) C4
 Halle (rue de la) C4
 Hambursin (rue Eugène) B2
 Harscamp (galerie d') B4
 Harscamp (rue d') C4
 Harscamp (hospice d') C4
 Hastendon (place d') A2
 Haute Marcelle (rue) B3-B4
 Herbatte (boulevard d') A4-A5
 Heuy (pont d') A2
 Huart (boul. baron L.) C4
 Huit mai (place du) C1
 Inquiétude (rue de l') A3-A4
 Jambes (pont de) D4
 Jean 1er (avenue) C2-C3
 Joghiers (quai des) C3
 Joséphine-Charlotte (place) C5
 Kefer (rue) C5
 Kegeljan (place) C4
 Léanne (impasse) A5
 Léanne (rue) A4
 Lélièvre (rue) B3
 Lemaître (rue Henri) B2
 Léopold (place) A4
 Léopold (square) A4
 Léopold II (avenue) B2
 Libération (pont de la) B2
 L'Ilon (place) B4
 Lombard (rue du) B4
 Louvain (chaussée de) A4
 Louvain (rue du Pont de) A4
 Maquet (rue A.) A3
 Marché aux Légumes (place) B4
 Marchovelette (rue de) C4
 Marie d'Artois (avenue) D2
 Marie-Henriette (rue) A3
 Marlagne (avenue de la) C1
 Masuis Jambois (rue des) D5
 Materne (av. bourgm. Jean) D4-D5
 Maus (place) A4
 Mazy (rue) D4-C5
 Mélézes (chemin des) C1-D1
 Mélot (boulevard Ernest) A3
 Menton (allée de) D1-E1
 Mercier (avenue cardinal) B2
 Merckem (boulevard de) A2-A3
 Merveilleuse (route) D2-D3
 Meuse (boulevard de la) E3-D4
 Meuse (quai de) D4-C5
 Michel (rue général) B4-A5
 Milieu du Monde (av. du) E1-D2
 Moncrabeau (rue) A4-B4
 Monnaie (rue de la) C4
 Mottiaux (rue) D4
 Namêche (rue Lucien) A4-B4
 Nord (boulevard du) A3
 Notre-Dame (rue) C4
 Omalius (place d') A3
 Ouvrage (rue de l') B3
 Palais de Justice (place du) B3
 Patenier (rue) B1
 Pépin (rue) B4
 Pépinière (rue de la) A3
 Pied du Château (pl.) C4
 Piret-Pauchet (rue) A4
 Plage (rue de la) D4
 Pont (rue du) C4
 Pont des Ardennes (rue du) C5
 Ponty (rue) B5
 Premier Lanciers (rue du) B4
 Président (rue du) B3-C3
 Prévoyance (rue de la) B1
 Prince de Liège (avenue) C5
 Prinz (rue Renée) D4
 Progrès (rue du) B1
 Quai de Meuse D4-C5
 Quatre fils Aymon (rue des) B5
 Quatre Maisons (rue des) C1
 Quatrième Génie (rue du) B5
 Racine (chemin) D2
 Rampe Verte C3
 Ravaisson (rue Félix) A4-A5
 Rogier (rue) A4-B4
 Romagnesi (chemin) D2-D3
 Ronvaux (rue Edmond) B5
 Roses (rue des) C5
 Rupplémont (rue) C3
 Ryckmans (place A.) B2
 Saint-Aubain (place) B3
 Saint-Calixte (rue) D4
 Saint-Fiacre (rue) A5
 Saint-Hilaire (place) C4
 Saint-Jacques (rue) B3-B4
 Saint-Jean (rue) C3-C4
 Saint-Joseph (passage) B4
 Saint-Joseph (rue) B3
 Saint-Loup (rue) B3
 Saint-Martin (rue) D3-E3
 Saint-Nicolas (rue) B4-B5
 Saintonge (chemin J.A.) D3
 Saintraint (rue Joseph) B3-C3
 Saint-Simon (sentier) C3-D3
 Salzennes-les-Moullins (rue) A1-A2
 Séminaire (rue du) B3-C3
 Servais (place Maurice) C4
 Simonis (rue) C1
 Stade (allée du) D5
 Station (place de la) A3
 Tabora (avenue de) A1-B2
 Tan (rue du) B5
 Tanneries (rue des) B4-B5
 Temple (rue du) A4
 Théâtre (place du) B4
 Thonard (rond-point M.) D2
 Tillieux (rue) D4
 Tour (rue de la) B4-C4
 Ursulines (impasse des) A3
 Van Opère (rue) D4-C5
 Vauban (avenue) D1-D2
 Verriers (rue des) A5
 Verte (rue) D4-D5
 Vierge (rempart de la) B2-B3
 Violettes (rue des) C5
 Vrithoff (avenue sergent) B1
 Wallonie (place de la) D5
 Waterloo (chaussée de) A1-A2
 Wérotte (rue Charles) C1-B2
 Wiertz (place) B1
 Wodon (rue Félix) A2
 Zoude (rue Charles) B1-C1

Access



BY CAR

Motorways E411 (Luxembourg - Bruxelles) and E42 (Liège-Mons), national roads N4 (Arlon-Namur), N90 (Liège-Charleroi) and N92 (Namur-Dinant).

SMART PARKING

- Park and ride (P+R) is the perfect solution!
 - P+R Saint-Nicolas (276 spaces)
Avenue Albert 1er.
 - P+R Bouge (716 spaces)
Rue Hebar
- Saturday, 4 car parks (350 spaces) at the University of Namur : BUMP, Droit inférieur, Bon Pasteur, Arsenal.

www.namur.be

BY TRAIN

Place de la Station - 5000 Namur
Tel. : +32 2 528 28 28 - www.b-rail.be

BY COACH

Place de la Station - 5000 Namur
Tel. : +32 81 25 35 55 - www.infotec.be

BY PLANE

- Brussels South Charleroi Airport
www.charleroi-airport.com
- Liège Airport
www.liegeairport.com
- Brussels Airport
www.brusselsairport.be

The Namur Tourist Office cannot be held liable for changes in price, or in other information relating to the attractions and municipalities mentioned in this brochure.

Useful info

THE TOURIST OFFICE

Place de la Station - 5000 Namur
Tel. : +32 81 24 64 49
www.visitnamur.eu
Service Groupes : +32 81 24 64 44

From spring, we welcome you in our new offices located in **rue du Pont** in the «Halle al'Chair».

MAISON DU TOURISME EXPLORE MEUSE

Tel. : +32 82 22 28 70 (Dinant)
www.exploremeuse.be

EMERGENCY SERVICES

Emergency medical services : 112
Police : 101 - Place du Théâtre - Namur
Fire : 112

TAXIS

Hepp Taxis : +32 475 99 99 88
Taxis Namur : +32 81 22 55 55
Taxis Express Namur : +32 476 55 52 44

WC PUBLICS (FREE)

See p. 64 - 65

LI BIA VELO

250 self-service bicycles at 25 stations across Namur
www.libiavelo.be

BLUE BIKE

Bike at your disposal at Namur railway station - www.blue-bike.be

PRO VELO NAMUR

Bicycle hire and repair
Place de la Station, 1 - 5000 Namur
Tel : +32 81 81 38 48 - www.provelo.org

ELECTRIC BICYCLES

Auberge de Jeunesse Félicien Rops
Av. Félicien Rops, 8 - 5000 Namur
www.lesaubergesdejeunesse.be
+32 81 22 36 88



A visit to the *Atelier de Parfumerie Delforge* is a chance to discover the world of perfumes in general, and ours in particular; to learn about the different stages of research, composition and creation of unique scents; to walk through the Workshop and its underground passages and immerse yourself in the proud past of its exceptional building in the heart of the Citadel of Namur; and finally, to avail yourself of sound advice in order to find the perfume that matches who you are...



VISITS TO THE WORKSHOP (+/- 1 hour)

Guided or audio-guided tours in French, Dutch, German, English, Spanish and Italian.

- individually, on Saturdays (except public holidays) at 3:30 pm, during the school holidays, from Monday to Saturday (except public holidays), at 3:30 pm.
€3.50 per person (€3.00 for children under 12).

- degressive rates for groups: custom quote and by reservation.

THE SHOP open access year round
Monday to Saturday, 10:00 am to 6:00 pm
(5:30 from November to February inclusive)
Sundays and public holidays, 2:00 to 6:00
(5:30 from November to February inclusive)



ATELIER DE PARFUMERIE GUY DELFORGE

ROUTE MERVEILLEUSE, 60
B-5000 NAMUR-CITADELLE