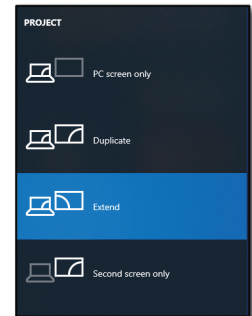


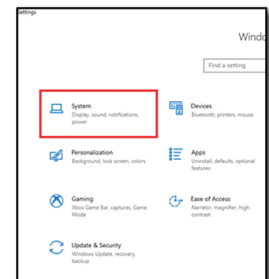
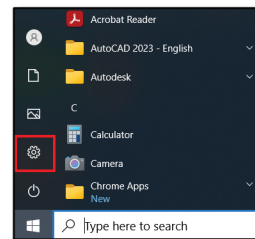
TLB Rooms - Presenter Mode Issue

If you are experiencing no image displayed on the LG Monitor from the HDMI connection on your laptop when using Extended Desktop or Presenter View on Powerpoint, the following instructions may help.

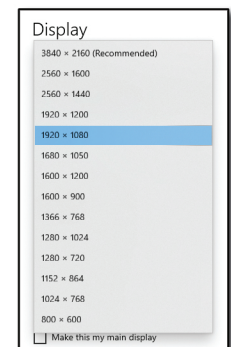
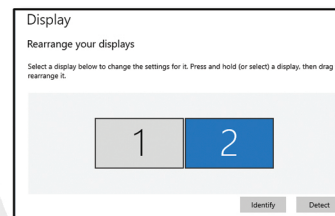
1: Make sure your laptop is on **Extended Desktop**, to do this press the **'Windows' key + P** and select **Extend** from the options.



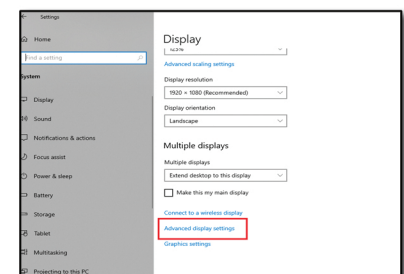
2: Navigate to the **Settings** page in the **Windows Start** menu and click the **Settings Cog**, then select **System**.



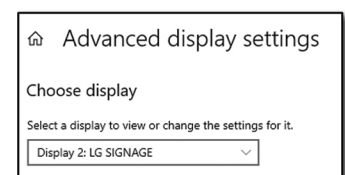
3: On the **Display** tab, Select **Monitor 2**. Then select **Display Resolution**, and change it to **1920 x 1080** (or Match whatever the laptop recommended is on Monitor 1).



5: Then go to **Advanced Display Settings**



6: Select the **LG Screen** in the **Choose Display** menu which would appear here.



7: Select the **60Hz (interlaced)** option in the **Refresh Rate** menu

