



# ASSET

AI for Sustainable Prevention  
of Autoimmunity in the Society

## Structure and Goals

“Diabetesvård med superkrafter”  
Stockholm, November 11<sup>th</sup>, 2022

*Anna Krohwinkel*  
LHC



# ASSET

AI for Sustainable Prevention  
of Autoimmunity in the Society



**Leading Health Care**



VINNOVA



# ASSET

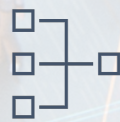
AI for Sustainable Prevention  
of Autoimmunity in the Society



Artificial Intelligence / Machine Learning algorithms  
to improve prediction of risk and response to  
treatment in T1D

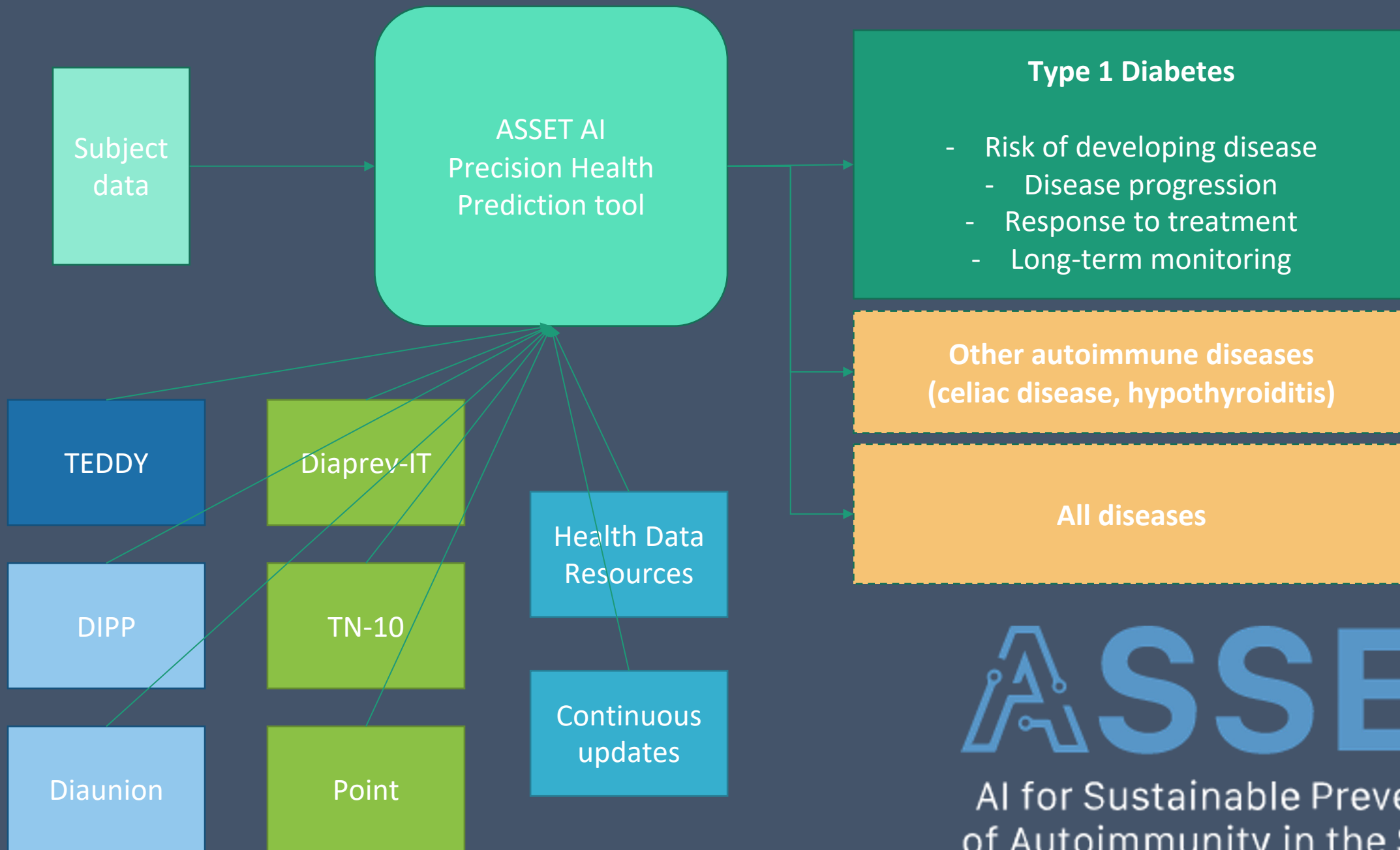


Clinical evaluation of personalized preventive action



Evaluating the economic and legal prerequisites of  
applying a precision health approach in the Swedish  
health care system

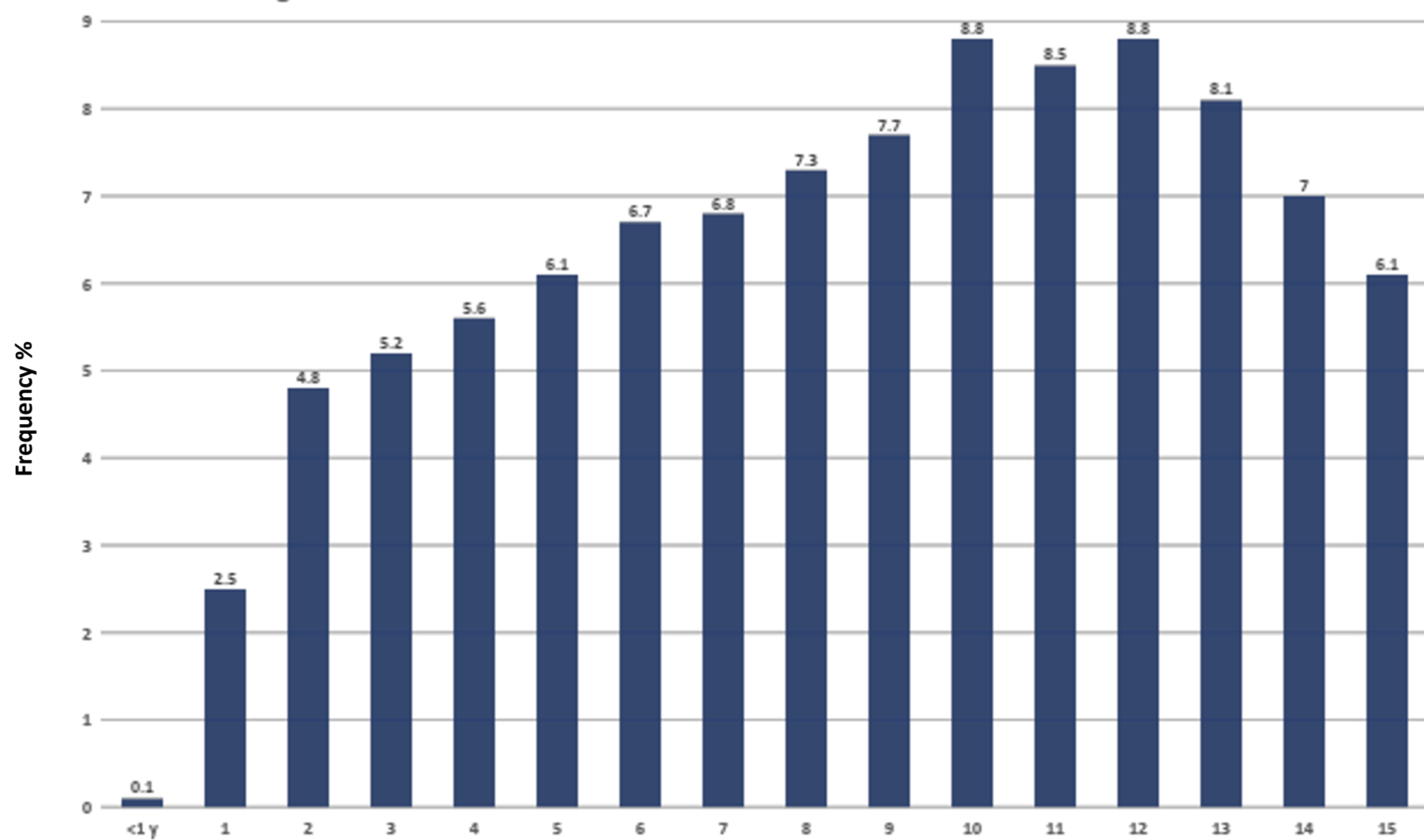




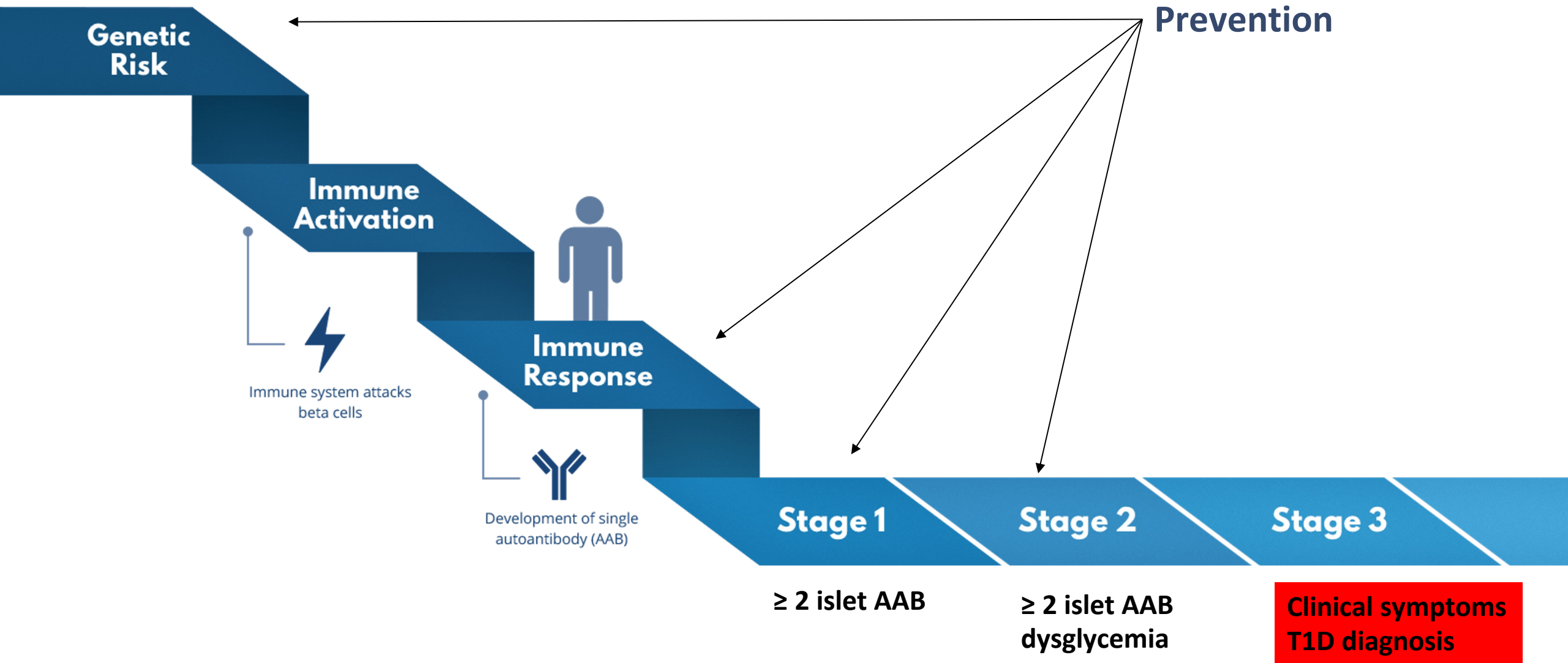
# ASSET

AI for Sustainable Prevention  
of Autoimmunity in the Society

Age at onset of T1 diabetes in 11 383 Swedish children. Year 2002 - 2017



# Precision prevention and treatment for T1D



Different trajectories for onset and development

(source:  
Trialnet)

Machine  
algorithms to improve



Artificial Intelligence /  
Learning

prediction of risk of response to  
treatment in T1D



The Environmental Determinants of Diabetes in the Young

- Data from observational cohort studies (TEDDY)
- Access data from other cohort studies and prevention/intervention clinical trials through collaborations
- Use AI/ML algorithms to improve prediction of T1D risk and response to treatments
- Use data analysis to improve design of clinical trials



LUNDS UNIVERSITET

- Evaluating preventative therapeutics (starting with clinical trial of Diamyd)
- Evaluating practical feasibility of screening – what to screen for, when and for whom?
- Simulating screening and follow-ups (*in silico*)
- Evaluating clinical support tool



## Impact of ASSET

- **“Big picture” approach**
- **Risk prediction and treatment effect**
- **Clinical decision support tool**
- **Screening program**
- **Healthcare hurdles to precision prevention implementation**
- **Expansion beyond diabetes?**
- **Collaborations**

# A Forum to drive precision medicine in Type 1 Diabetes

Contact with T1D  
research community

Aim for an European-  
level contact network

Partnerships in  
developing AI algorithms

Discuss best practices for  
screening programs

Integration of data from  
different cohort studies

