



Omicron daily overview: 31 December 2021

Summary

As VOC Omicron is now the dominant strain within England, with effect from 1 January 2022 UKHSA will no longer be separately reporting VOC Omicron statistics
Daily COVID-19 statistics continue to be available via [UK Summary | Coronavirus \(COVID-19\) in the UK \(data.gov.uk\)](#)

UK total case numbers

	Confirmed Omicron cases	Change from previous report	SGTF cases*	Change from previous report
England	212,019	+13,671	492,543	+41,349
Northern Ireland	12,772	+232	N/A	N/A
Scotland	13,649	+2,970	97,480	+8,084
Wales	8,340	+241	10,018	+1,627
Cumulative total	246,780	+17,114	600,041	+51,060

Data up to 6pm 30 December 2021 for England

Data up to 4pm 30 December 2021 for Northern Ireland

Data up to 5pm 30 December 2021 for Scotland.

Data up to 5pm 30 December 2021 for Wales

Notes to table

* SGTF cases in the above table excludes persons ruled out as other variants

Hospitalisations and deaths

	Hospitalisations (Confirmed and SGTF*)	Change from previous report	Deaths	Change from previous report
England	981	+166	75	+21

Data provided 30 December 2021 for dates up to 29 December 2021

Notes to table

*SGTF cases in the above table exclude cases confirmed with other variants

Data set and definitions as described in Appendix 2. The data is lagged and requires hospital staff to submit emergency care data sets to NHS Digital for analysis and linkage with testing data

Proportion of hospitalised cases with confirmed or probable (SGTF+) Omicron who are unvaccinated, by Region

Region	% Confirmed Omicron unvaccinated hospitalised	% SGTF* unvaccinated hospitalised	% Total unvaccinated Omicron hospitalised
East Midlands	25.9%	8.0%	20.5%
East of England	17.8%	35.3%	22.6%
London	40.3%	35.2%	39.3%
North East	10.7%	10.0%	10.5%
North West	21.6%	15.0%	19.7%
South East	17.9%	26.3%	19.4%
South West	14.8%	0.0%	13.0%
West Midlands	20.8%	4.8%	13.3%
Yorkshire and Humber	31.0%	13.3%	22.0%
England	27%	19%	25%

(n=960) 21 cases excluded due to unknown vaccination status.

Data provided 30 December 2021 for dates up to 29 December 2021

Notes to table

*SGTF cases in the above table exclude cases confirmed with other variants
 Data set and definitions as described in Appendix 2. The data is lagged and requires hospital staff to submit emergency care data sets to NHS Digital for analysis and linkage with testing data
 The % total unvaccinated Omicron hospitalised cases is calculated against the total combined number of confirmed and SGTF cases with known vaccination status that have been hospitalised.

From the above table, 39.3% of hospitalised cases in London were unvaccinated. London is currently the largest and most robust data set of the regions and reflects the importance of vaccine uptake.

Breakdown of England daily cases by region

Region	Confirmed Omicron cases	Change from previous report	SGTF cases*	Change from previous report
East Midlands	16,391	+887	41,909	+3,392
East of England	13,834	+1,160	51,527	+3,974
London	50,430	+2,110	109,258	+4,715
North East	8,765	+344	19,433	+3,392
North West	27,207	+3,125	103,826	+9,330
South East	46,826	+2,067	45,981	+4,031
South West	22,321	+1,549	17,628	+1,829
West Midlands	14,054	+1,675	42,681	+3,532
Yorkshire and Humber	11,549	+727	59,909	+7,194
Unknown	642	+27	391	-40^
Total	212,019	+13,671	492,543	+41,543

Data up to 6pm 30 December 2021

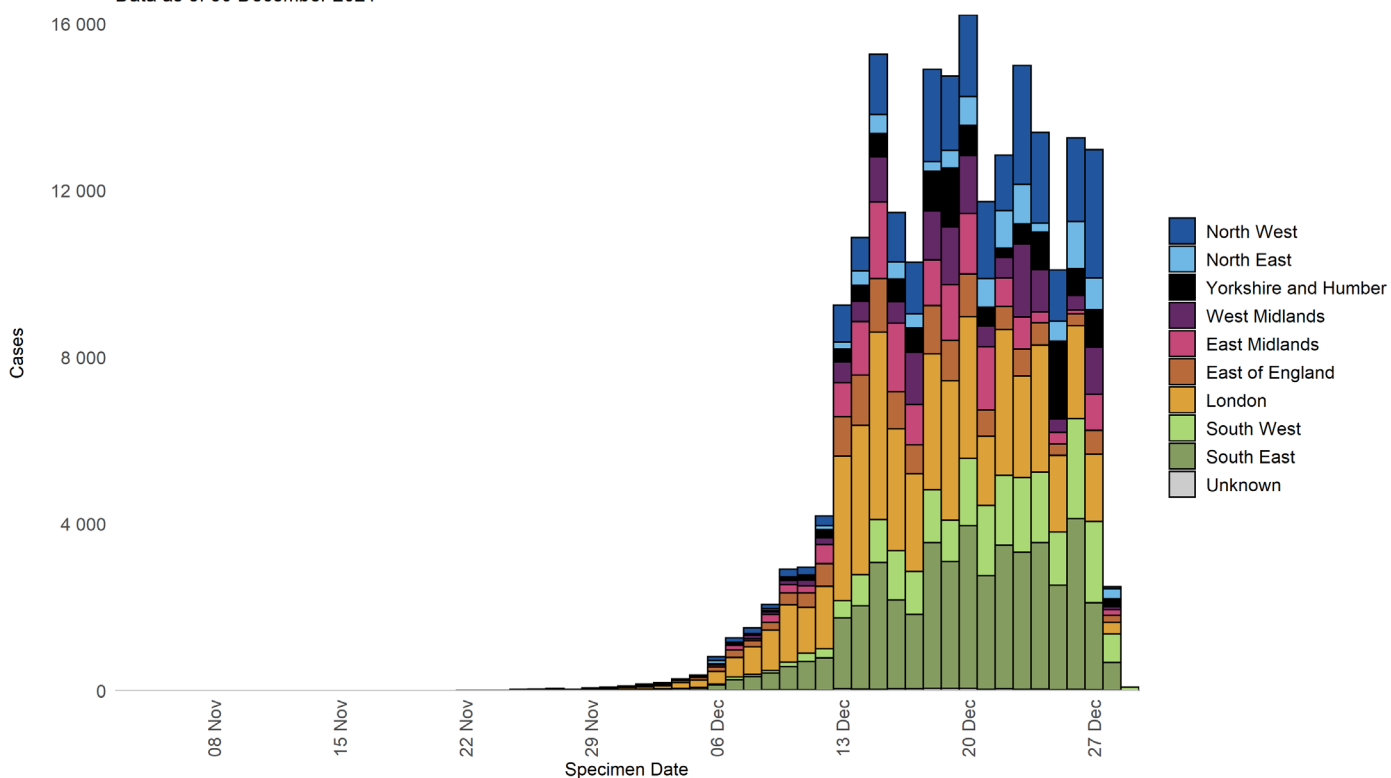
Notes to table

*SGTF cases in the above table exclude cases confirmed with other variants

^Negative changes since previous report can occur due to updated information

Epidemiology curve of confirmed Omicron cases by region

Data as of 30 December 2021



Samples with S-gene target failure (SGTF)

Number and proportion of SARS-CoV-2 cases with SGTF by region, among those with specimen dates on 28 and 29 December 2021.

Region	Total COVID Cases with known S-gene status**	SGTF cases	SGTF %
East Midlands	3,504	3,348	95.5
East of England	5,145	4,953	96.3
London	6,073	5,858	96.5
North East	3,461	3,235	93.5
North West	9,847	9,457	96.0
South East	4,789	4,555	95.1
South West	1,923	1,820	94.6
West Midlands	4,234	4,058	95.8
Yorkshire and Humber	7,016	6,706	95.6
England	46,066	44,064	95.7

SGSS data as of 6pm 30 December 2021.

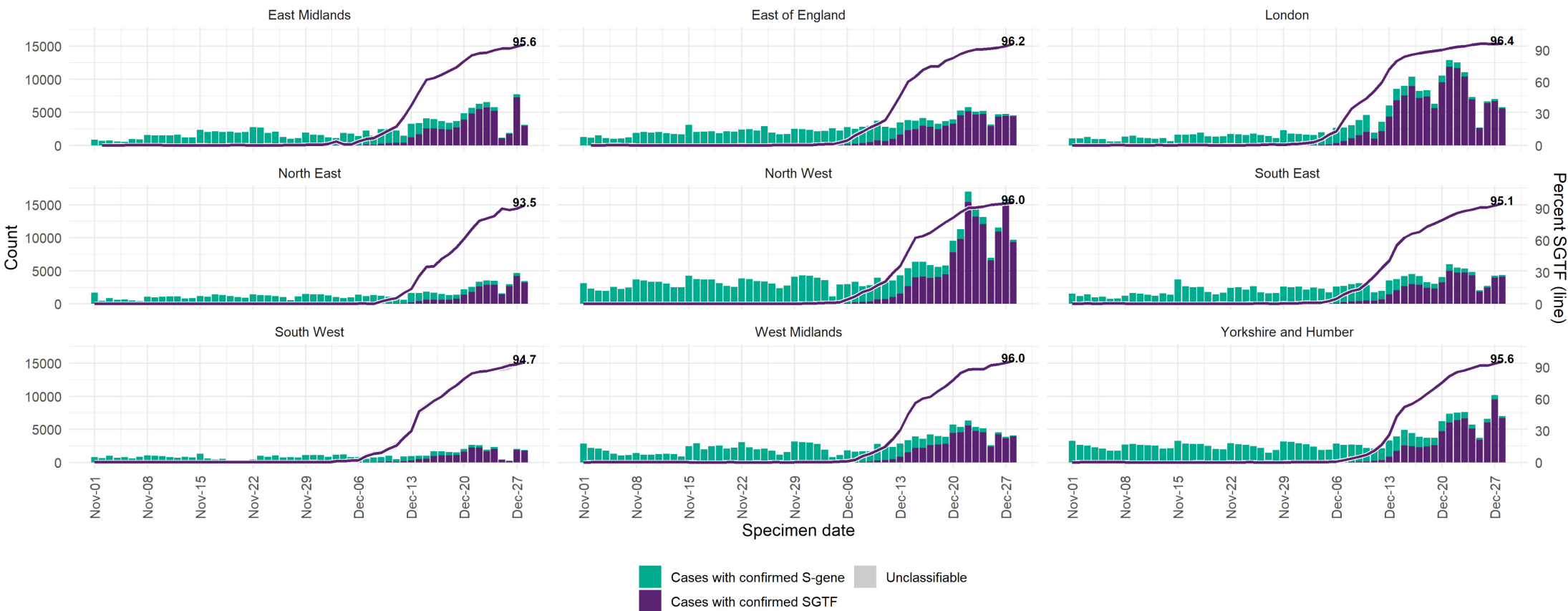
Notes to tables

** Known S-gene status based on those tested by TaqPath laboratories (Alderley Park, Milton Keynes, Glasgow, and Newcastle Lighthouse Laboratories).

Figure 1. COVID-19 cases with detectable S-gene/SGTF and percentage with SGTF among those tested in TaqPath Labs by day, by region

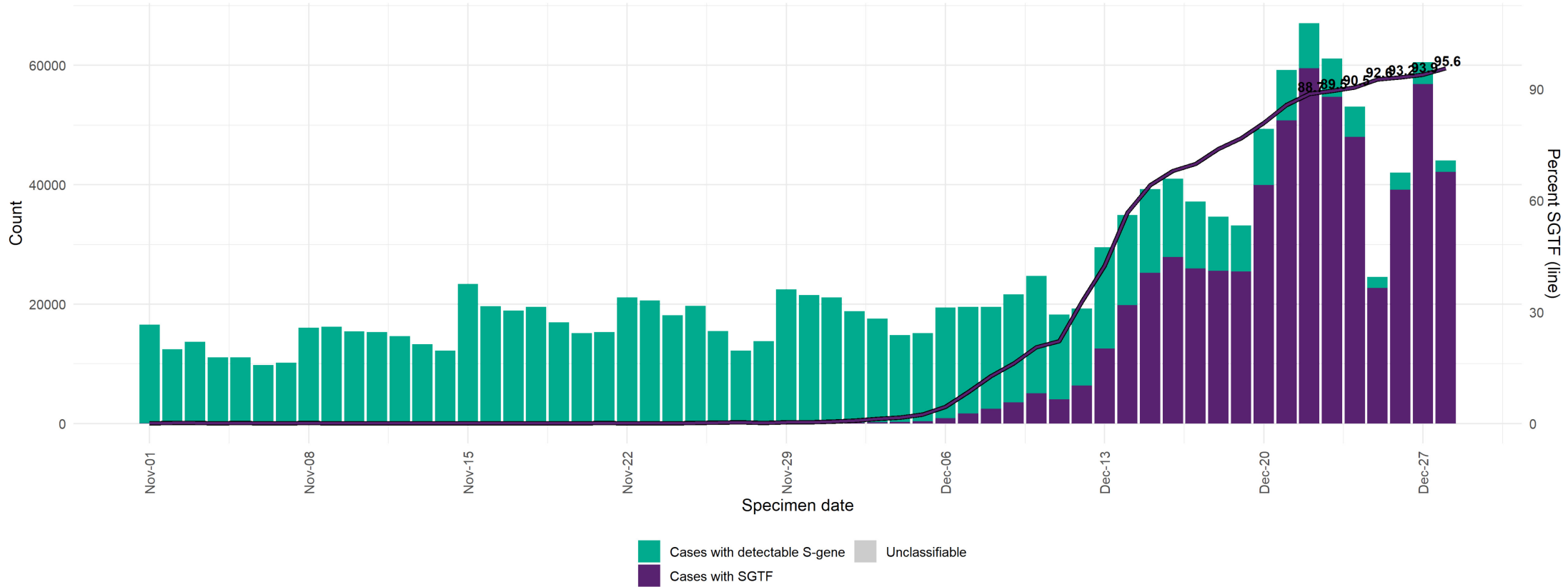
(95% confidence intervals indicated by grey shading).

Data updated 6pm 30 December 2021.



A detectable S gene is a proxy for Delta since April 2021. SGTF was a surveillance proxy for VOC-20DEC-01 however has largely consisted of Delta since August 2021. Local trends in these data may be affected by decisions to direct the processing of samples via a TaqPath laboratory. Only tests carried out with the TaqPath PCR assay and with confirmed SGTF or S gene results included, from Newcastle, Alderley Park, Milton Keynes and Glasgow Lighthouse Labs. SGTF refers to non-detectable S gene and ≤ 30 CT values for N and ORF1ab genes. Detectable S-gene refers to ≤ 30 CT values for S, N, and ORF1ab genes. Produced by Outbreak Surveillance Team, UKHSA.

Figure 2. Number of COVID-19 cases with S-gene positive/SGTF by day, among those tested in TaqPath labs
 (95% confidence intervals indicated by grey shading).
 Data updated 6pm 30 December 2021.



A detectable S gene is a proxy for Delta since April 2021. SGTF was a surveillance proxy for VOC-20DEC-01 however has largely consisted of Delta since August 2021. Local trends in these data may be affected by decisions to direct the processing of samples via a TaqPath laboratory. Only tests carried out with the TaqPath PCR assay and with confirmed SGTF or S gene results included, from Newcastle, Alderley Park, Milton Keynes and Glasgow Lighthouse Labs. SGTF refers to non-detectable S gene and ≤ 30 CT values for N and ORF1ab genes. Detectable S-gene refers to ≤ 30 CT values for S, N, and ORF1ab genes. Produced by Outbreak Surveillance Team, UKHSA.

Appendix 1

Counts are based on case definitions agreed on 13 December 2021
(Implemented on data 6pm 14 December 2021):

- **confirmed case:** Omicron (B.1.1.529) by sequencing or genotyping (i) 417N and 681R failure; ii) 69-70 deletion plus 417N; iii) 69-70 deletion plus 501Y; iv) Q493R, vi) other relevant genotyping results)
- **probable case:** COVID-19 PCR positive and i) SGTF^^ or ii) 69-70 deletion with specimen dates from 1 December**
- **possible case:** COVID-19 PCR positive and SGTF^^ with specimen dates from November 1 up to and including November 30*

^^S-gene target failure (SGTF): A positive SARS-CoV-2 PCR test carried out on the TaqPath assay with undetectable S-gene and CT values ≤ 30 for both N and Orf1ab gene targets. Currently reported into SGSS by Milton Keynes, Alderley Park, Glasgow, and Newcastle lighthouse laboratories.

*Excludes those confirmed as non-Omicron variant.

Appendix 2

Definitions of hospitalisation

Cases with presentation to a type 1 A&E and are admitted or transferred at the end of their emergency care stay, who have a positive SARS-CoV-2 test either:

- within 14 days prior to admission
- within 1 day post admission

Data source: NHS England provide this data from the NHS Digital Emergency Care Data Set (ECDS). This data is subject to delays.